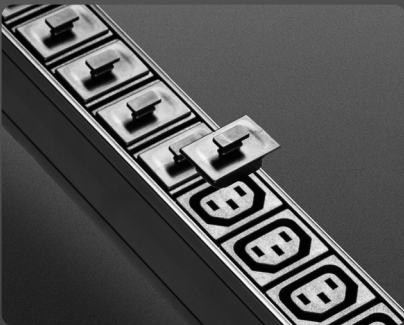


With the SURGE PROTECTION INDICATOR, connected IT devices are safeguarded against unexpected electrical surges.

The C14 SMART-LOCK(included with the product) provides a more secure socket connection, preventing the risk of accidental disconnection.

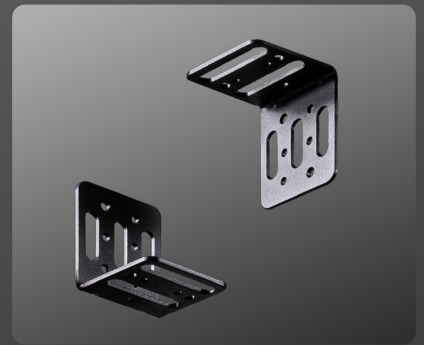


When the slot is not in use, the C13 POWER PLUG IN SLOT COVER prevents dust, dirt, or other foreign objects from entering the slot, avoiding potential functional issues or short circuits.



Rack mount ears allow equipment to be securely installed in a standard server rack or network rack, ensuring that the equipment remains stable and does not move or shift within the rack.

The sturdy rack mount buttons can be installed in the button mount holes on the rack. They can be replaced with the rack mount kit (included with the product) to allow for more versatile mounting angles.



FSP-PDU01 SERIES

FSP-PDU01216C
FSP-PDU01218C
FSP-PDU01224C

FSP's Basic PDU series now includes 0U and 1U models with 16, 18, or 24 outlets, available in both IEC and NEMA socket configurations. Featuring a compact aluminum housing, these PDUs combine a sleek design with robust durability, while minimizing installation space to enhance workplace efficiency.

Designed for data centers, server rooms, and network wiring closets, FSP's Basic PDUs offer industrial-grade power distribution that is both reliable and easy to deploy.



DATA CENTER



SERVER ROOM



NETWORK WIRING CLOSET

*For safety, ensure the equipment is installed near a wall outlet. The disconnection device (appliance coupler for detachable cords or plug for non-detachable cords) must remain easily accessible at all times.



SPECIFICATIONS

ELECTRICAL

	FSP-PDU01216C	FSP-PDU01218C	FSP-PDU01224C
Nominal Input Voltage	100-240 VAC	100-240 VAC	100-240 VAC
Maximum Input Current	16A (Max)	16A (Max)	16A (Max)
Input Frequency	50-60 Hz	50-60 Hz	50-60 Hz
Input Connection	IEC 60320 C20	IEC 60320 C20	IEC 60320 C20
Input Power	3840VA (Max)	3840VA (Max)	3840VA (Max)
Outlet Type	(16) IEC 60320 C13	(17) IEC 60320 C13 (1) IEC 60320 C19	(22) IEC 60320 C13 (2) IEC 60320 C19
Maximum Output Current (Outlet)	10A (Max)	C13: 10A (Max) C19: 16A (Max)	C13: 10A (Max) C19: 16A (Max)
Maximum Output Current (Bank)	16A (Max)	16A (Max)	16A (Max)
Maximum Output Current (Total)	16A (Max)	16A (Max)	16A (Max)
OPD(Overcurrent Protection Device)	Yes	Yes	Yes

ENVIRONMENTAL

Temperature (Operating / Storage)	0 – 40 °C / -20 – 60 °C	0 – 40 °C / -20 – 60 °C	0 – 40 °C / -20 – 60 °C
Elevation (Operating / Storage)	3000m	3000m	3000m

PHYSICAL PROPERTIES

Dimensions (L x W x H)	71.56 x 4.44 x 6.00 cm	48.20 x 4.44 x 8.85 cm	96.68 x 4.44 x 6.00 cm
Weight	1.10 kg	1.26 kg	1.40 kg
Power Cord Length	10ft (3 × 1.5mm ²)	10ft (3 × 1.5mm ²)	10ft (3 × 1.5mm ²)

COMPLIANCE

EMC Verification	CE Class A	CE Class A	CE Class A
Safety Verification	CE, LVD, UL	CE, LVD, UL	CE, LVD, UL

FSP-PDU01216C



FSP-PDU01218C



FRONT

REAR

FSP-PDU01224C



*This product specification sheet is intended to provide an overview of the product. While we strive to ensure the accuracy of the information, there may be spelling, input, or printing errors. Therefore, we are not liable for any such errors. Specifications and information are subject to change without notice.