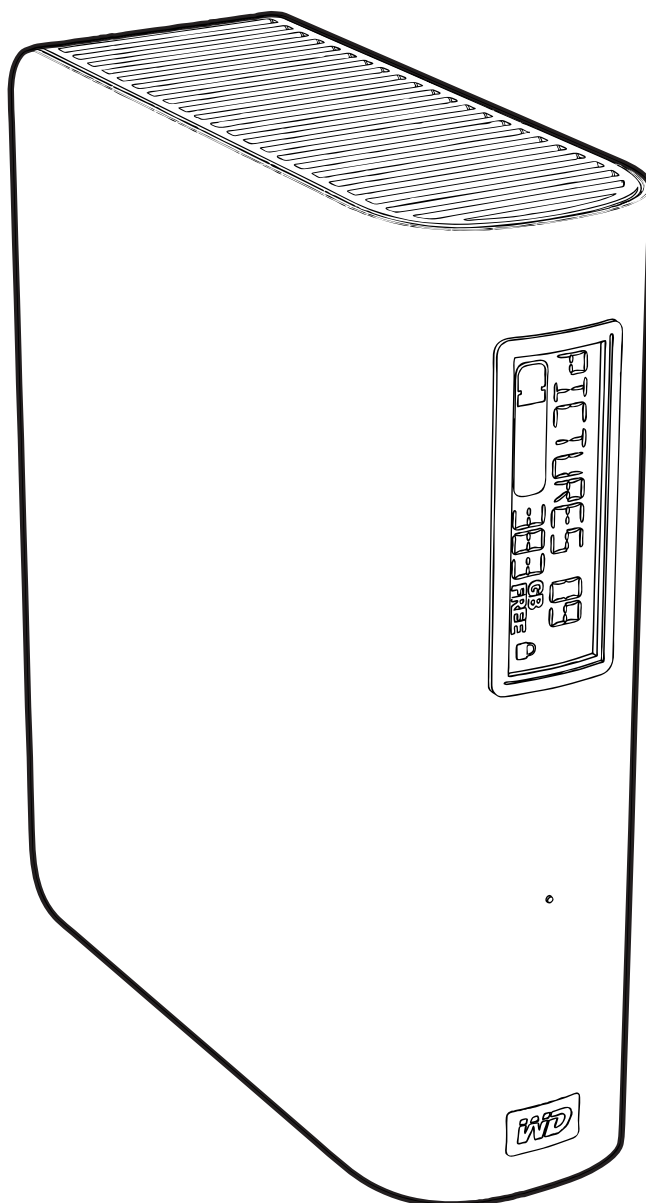


# My Book®

Elite™

User Manual



## WD Service and Support

Should you encounter any problem, please give us an opportunity to address it before returning this product. Most technical support questions can be answered through our knowledge base or e-mail support service at [support.wdc.com](http://support.wdc.com). If the answer is not available or if you prefer, please contact WD at the best telephone number shown below.

Your product includes 30 days of free telephone support during the warranty period. This 30-day period starts on the date of your first telephone contact with WD Technical Support. E-mail support is free for the entire warranty period and our extensive knowledge base is available 24/7. To help us keep you informed of new features and services, remember to register your product as instructed on “Registering Your Drive” on page 40.

## Accessing Online Support

Visit our product support website at [support.wdc.com](http://support.wdc.com) and choose from these topics:

- **Downloads** - Download drivers, software, and updates for your WD product.
- **Registration** - Register your WD product to get the latest updates and special offers.
- **Warranty & RMA Services** - Get Warranty, Product Replacement (RMA), RMA Status, and Data Recovery Information.
- **Knowledge Base** - Search by keyword, phrase, or answer ID.
- **Installation** - Get online installation help for your WD product or software.

## Contacting WD Technical Support

When contacting WD for support, have your WD product serial number, system hardware, and system software versions available.

North America		Asia Pacific	
English	800.ASK.4WDC (800.275.4932)	Australia	1 800 42 9861
Spanish	800.832.4778	China	800 820 6682/+65 62430496
		Hong Kong	+800 6008 6008
		India	1 800 11 9393 (MNTL)/1 800 200 5789 (Reliance) 011 26384700 (Pilot Line)
<b>Europe (toll free)*</b>	00800 ASK4 WDEU  (00800 27549338)	Indonesia	+803 852 9439
		Japan	00 531 650442
		Korea	02 703 6550
<b>Europe</b>	+31 880062100	Malaysia	+800 6008 6008/1 800 88 1908/+65 62430496
<b>Middle East</b>	+31 880062100	Philippines	1 800 1441 0159
<b>Africa</b>	+31 880062100	Singapore	+800 6008 6008/+800 608 6008/+65 62430496
		Taiwan	+800 6008 6008/+65 62430496

\* Toll free number available in the following countries: Austria, Belgium, Denmark, France, Germany, Ireland, Italy, Netherlands, Norway, Spain, Sweden, Switzerland, United Kingdom.

# Table of Contents

WD Service and Support . . . . .	ii
Accessing Online Support . . . . .	ii
Contacting WD Technical Support. . . . .	ii
<b>1 About Your WD Drive . . . . .</b>	<b>1</b>
Features . . . . .	1
Kit Contents . . . . .	2
Optional Accessories . . . . .	2
Compatibility . . . . .	3
Format . . . . .	3
Physical Description . . . . .	3
Views . . . . .	3
Indicators . . . . .	4
Power Button . . . . .	5
Drive Interface . . . . .	5
Kensington® Security Slot . . . . .	5
Registering Your WD Product . . . . .	5
Handling Precautions . . . . .	6
<b>2 Connecting the Drive and Getting Started . . . . .</b>	<b>7</b>
Connecting the Drive . . . . .	7
Installing the Drive . . . . .	8
Installing on Windows XP. . . . .	8
Installing on Windows Vista/Windows 7. . . . .	10
Getting Started With WD SmartWare Software . . . . .	12
WD SmartWare Overview . . . . .	14
WD SmartWare Home Screen . . . . .	14
Viewing the Info/Online Help Topics. . . . .	16
<b>3 Backing Up Your Computer Files . . . . .</b>	<b>17</b>
About Backing Up Your Computer Files . . . . .	17
Backing It All Up. . . . .	19
Advanced Backup Capabilities. . . . .	20
Selecting Specific Content to Back Up . . . . .	21
Changing the Backup Software Settings. . . . .	22
<b>4 Retrieving Backed Up Files . . . . .</b>	<b>25</b>
About Retrieving Files. . . . .	25
Retrieving a File . . . . .	25
Retrieving a Folder . . . . .	28
Retrieving an Earlier Version of a File or Deleted Files. . . . .	28
Retrieving All of Your Content . . . . .	28

<b>5</b>	<b>Locking and Unlocking Your Drive</b> .....	<b>29</b>
	Password Protecting Your Drive .....	29
	Unlocking Your Drive .....	31
	Unlocking Your Drive With the WD SmartWare Software .....	31
	Unlocking Your Drive Without the WD SmartWare Software .....	32
	Turning Off the Drive Lock Feature .....	33
	Changing Your Password .....	33
<b>6</b>	<b>Managing and Customizing Your Drive</b> .....	<b>34</b>
	WD SmartWare Icon .....	34
	Opening WD SmartWare Software .....	34
	Checking Status and Temperature .....	35
	Monitoring Icon Alerts .....	35
	Disconnecting the Drive Safely .....	36
	Using the System Tray .....	36
	Using the Power Button .....	36
	Customizing Your Software Settings .....	36
	Specifying a Different Retrieve Folder .....	37
	Setting the Preferences Options .....	37
	Customizing Your Drive Settings .....	38
	Specifying a Name For Your Drive .....	39
	Registering Your Drive .....	40
	Setting the Drive Sleep Timer .....	41
	Erasing Your Drive .....	41
	Uninstalling the WD SmartWare Software .....	42
	Windows XP .....	42
	Windows Vista or Windows 7 .....	42
<b>7</b>	<b>Checking Drive Health</b> .....	<b>43</b>
<b>8</b>	<b>Using the Drive with a Mac</b> .....	<b>45</b>
	Reformatting the Drive .....	45
	Installing on a Mac OS X Tiger/Leopard/Snow Leopard .....	45
	Enhancing Performance with WD +TURBO .....	47
	WD SmartWare Icon .....	48
	Opening WD SmartWare Software .....	48
	Dismounting the Virtual CD .....	50
	Safely Dismounting the Drive .....	51
	Using the WD SmartWare Icon .....	51
	Using the My Book Icon .....	51
	Using the Power Button .....	52
	Displaying the Status, Serial Number, and Temperature .....	52
	Unlocking the Drive Manually .....	52
	The WD SmartWare Software is Not Available .....	52
	Your Computer Exits Sleep Mode .....	53
	Uninstalling WD SmartWare Software .....	54

<b>9</b>	<b>Troubleshooting</b>	<b>55</b>
	Installing, Partitioning, and Formatting the Drive	55
	Frequently Asked Questions	55
<b>A</b>	<b>Installing an SES Driver</b>	<b>57</b>
	Windows XP	57
	Installing the Driver Automatically	57
	Installing the Driver Manually	58
	Windows Vista	60
	Installing the Driver Automatically	60
	Installing the Driver Manually	60
	Windows 7	63
<b>B</b>	<b>Compliance and Warranty Information</b>	<b>66</b>
	Regulatory Compliance	66
	FCC Class B Information	66
	ICES/NMB-003 Compliance	66
	Safety Compliance	66
	CE Compliance For Europe	66
	GS Mark (Germany only)	66
	KCC Notice (Republic of Korea only)	67
	Environmental Compliance (China)	67
	Warranty Information	67
	Obtaining Service	67
	Limited Warranty	67
	<b>Index</b>	<b>69</b>

## 1

## About Your WD Drive

Welcome to your My Book™ Elite™ external hard drive, an elegant, high-capacity storage solution for all the chapters of your digital life. Our latest edition features a customizable smart display to identify what's on your drive, visual automatic, continuous backup software, and drive lock security protection. The new sleeker design brings beauty and brains together.

WD's best-selling My Book Elite USB external hard drive features WD SmartWare software that backs up your data automatically and continuously, shows your backup as it happens, and brings back lost files effortlessly.

This chapter includes the following topics:


- [Features](#)
- [Kit Contents](#)
- [Compatibility](#)
- [Format](#)
- [Physical Description](#)
- [Registering Your WD Product](#)
- [Handling Precautions](#)

### Features

Major features of the My Book Elite drive include:

**Smart display** - Create your own personalized drive label to remind you what's stored on each drive. You can even view the label when the drive is unplugged. The display also includes available capacity and security status.

**Smaller, sleeker, more streamlined design** - We've made these award-winning drives even smaller, sleeker, and more elegant. As always, this book-like shape takes up less space on your desk and allows two or more My Book drives to nestle neatly together like volumes on a shelf.

**WD SmartWare™ software**  - An easy-to-use solution that gives you the power to:

- Protect your data automatically - Relax! Your data is secure. Automatic, continuous backup will instantly make a second copy whenever you add or change a file.
- See your backup as it happens - Seeing is believing. Visual backup organizes and displays your content into categories and shows the progress of your backup.
- Bring back lost files effortlessly - Retrieve your valuable data to its original location whether you've lost all your data, deleted a file, or just overwritten an important file.
- Take control - Customize your backup, set drive security, run diagnostics, manage the power settings, and more from the WD SmartWare control center.

**Drive lock** - Gain peace of mind knowing that your data is protected from unauthorized access or theft with password protection and 256-bit hardware-based encryption.

**Capacity gauge** - See at a glance how much space is available on your drive.

**USB 2.0 interface** - A simple connection that offers convenience and compatibility among multiple computers.

**Grab-and-go docking station.** Convenient one-hand connection to your computer.

**Power miser** - My Book external drives are designed to save energy. WD GreenPower Technology™ lowers internal drive power consumption by up to 30%, a sleep mode reduces power during idle times, and a power-saving feature turns the drive on and off with your computer.

**Planet friendly** - We designed a small box from recycled materials to minimize waste. We encourage you to recycle it.

**Ready to plug-and-play with Windows PCs** - Formatted NTFS for compatibility with all Windows operating systems.

---

**Important:** For the latest WD product information and news, visit our website at [www.westerndigital.com](http://www.westerndigital.com). For the latest software, firmware, and product documentation and information, go to <http://products.wdc.com/updates>.

---

## Kit Contents

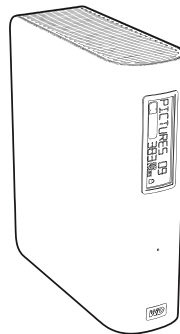
- My Book Elite external hard drive
- WD SmartWare software (included on the drive)
- USB cable
- AC adapter (configuration may vary depending on region)
- Quick Install Guide



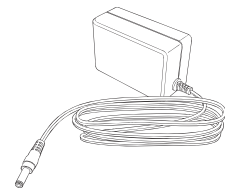
Quick Install



USB Cable



My Book Elite Drive



AC Adapter

## Optional Accessories

For information on optional accessories for this product, visit:

US	<a href="http://www.shopwd.com">www.shopwd.com</a> or <a href="http://www.wdstore.com">www.wdstore.com</a>
Canada	<a href="http://www.shopwd.ca">www.shopwd.ca</a> or <a href="http://www.wdstore.ca">www.wdstore.ca</a>
Europe	<a href="http://www.shopwd.eu">www.shopwd.eu</a> or <a href="http://www.wdstore.eu">www.wdstore.eu</a>
All others	Contact WD Technical Support in your region. For a list of Technical Support contacts, visit <a href="http://support.wdc.com">support.wdc.com</a> and see Knowledge Base Answer ID 1048.

## Compatibility

### Windows®

- Windows XP®
- Windows Vista®
- Windows 7®

### Mac OS® X®

- Tiger®
- Leopard®
- Snow Leopard™

Note: Compatibility may vary depending on your computer's hardware configuration and operating system.

For highest performance and reliability, install the latest updates and service pack (SP). For Windows, go to the **Start** menu and select **Windows Update**. For a Mac, go to the **Apple** menu and select **Software Update**.

## Format

Your My Book Elite drive is preformatted as a single NTFS partition for compatibility with all updated Windows operating systems. If you wish to use this drive with a Mac system, see "Using the Drive with a Mac" on page 45 and "Troubleshooting" on page 55.

## Physical Description

### Views

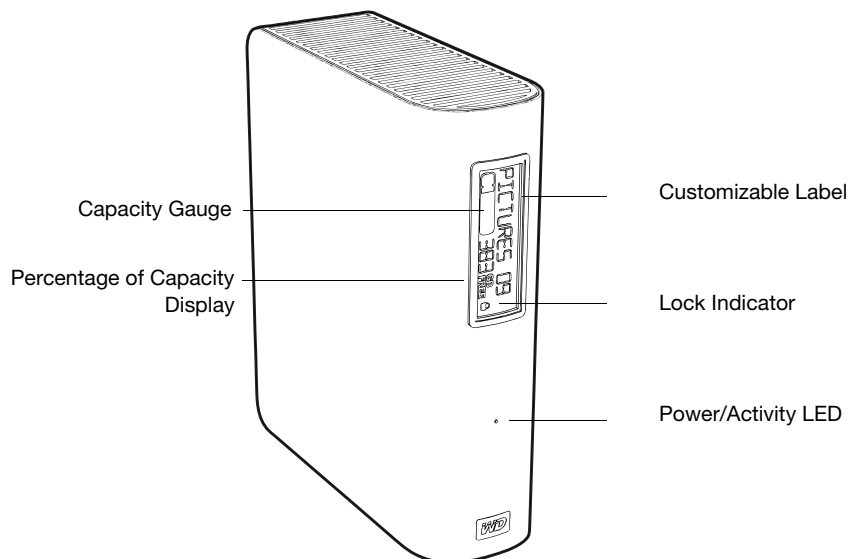


Figure 1. Front of My Book Elite Drive



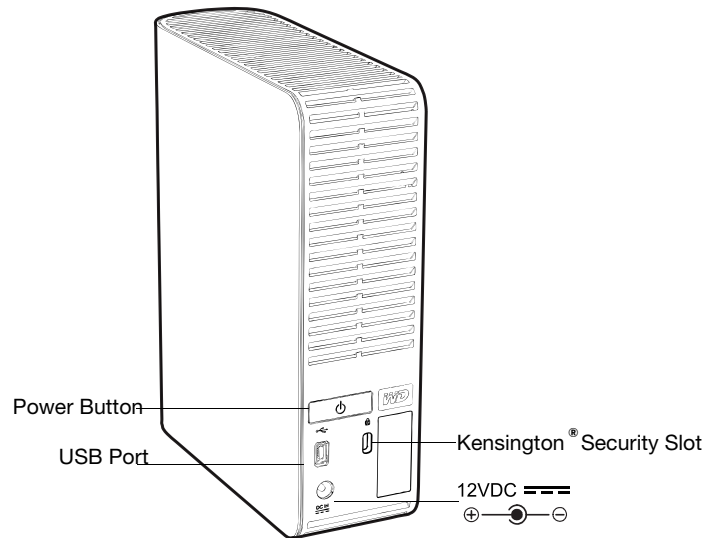


Figure 2. Back of My Book Elite Drive

## Indicators

**Customizable Label.** The customizable label displays the name you assign to the My Book. The label remains visible even when the drive is unplugged.

**Power/Activity LED.** The power/activity LED is on the center of the front panel of the drive. It indicates the drive's power state and activity. The LED indicator functions as shown in the table below.

Appearance	Description
On steady	Idle
Fast flashing (for approx. 3 times per second)	Activity
Slow flashing (approx. every 2.5 second)	System standby

**Lock Indicator.** The Lock Indicator shows whether the user has set a password on the drive. It is turned off only when you remove the password from the drive or the drive loses power.

**Capacity Gauge.** The capacity gauge consists of ten sections that fill from right to left (if the drive is horizontal) or bottom to top (if the drive is vertical) to indicate space used on the drive during the power-on state. Each section represents approximately 10 percent of drive capacity. The numerical display indicates the percentage of capacity available. The capacity gauge is visible only if the WD SmartWare software is installed and running on your computer.

Segment Number	% Filled
	<5 (does not display)
1	5-9
2	10-19
3	20-29
4	30-39
5	40-49
6	50-59
7	60-69
8	70-79
9	80-89
10	≥90

## Power Button

The power button is used to safely power down the unit and avoid data loss or damage to the unit. The power button only works if WD SmartWare is installed.

Note: After you power off the drive using the power button, if it remains connected to your computer, you need to press the power button again to turn it back on. If you disconnected the drive after turning it off, when you reconnect it to your booted-up computer, it automatically powers on.

## Drive Interface

Hi-Speed USB (USB 2.0) supports data transfer rates up to 480 Mb/s. USB 2.0 is backward-compatible with USB 1.1. Connection to a USB 1.1 port transfers data at USB 1.1 speed (up to 12 Mb/s).

## Kensington® Security Slot

For drive security, this drive is equipped with a Kensington security slot, which supports a standard Kensington security cable (sold separately). For more information on the Kensington security slot and available products, visit [www.kensington.com](http://www.kensington.com).

## Registering Your WD Product

Register your WD product to get the latest updates and special offers. You can easily register your drive using WD SmartWare software, as described in “Registering Your Drive” on page 40.

## Handling Precautions

WD products are precision instruments and must be handled with care during unpacking and installation. Drives may be damaged by rough handling, shock, or vibration. Be aware of the following precautions when unpacking and installing your external storage product:

- Do not drop or jolt the device.
- Do not move the device during activity.
- Do not use this product as a portable device.
- To allow proper ventilation, do not block any of the enclosure's air slots.

2

## Connecting the Drive and Getting Started

This chapter includes the following topics:

- Connecting the Drive
- Installing the Drive
- Getting Started With WD SmartWare Software
- WD SmartWare Overview
- WD SmartWare Home Screen
- Viewing the Info/Online Help Topics

### Connecting the Drive

Connect your My Book drive as shown below.

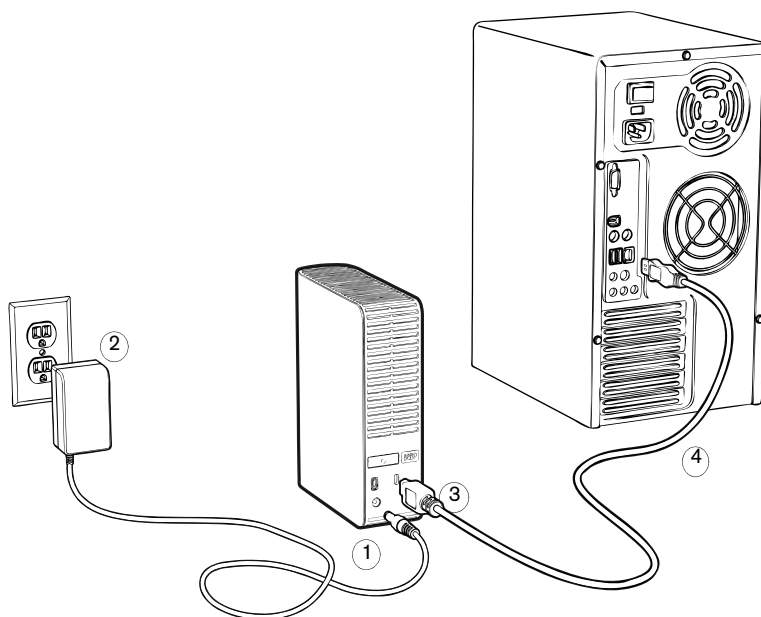
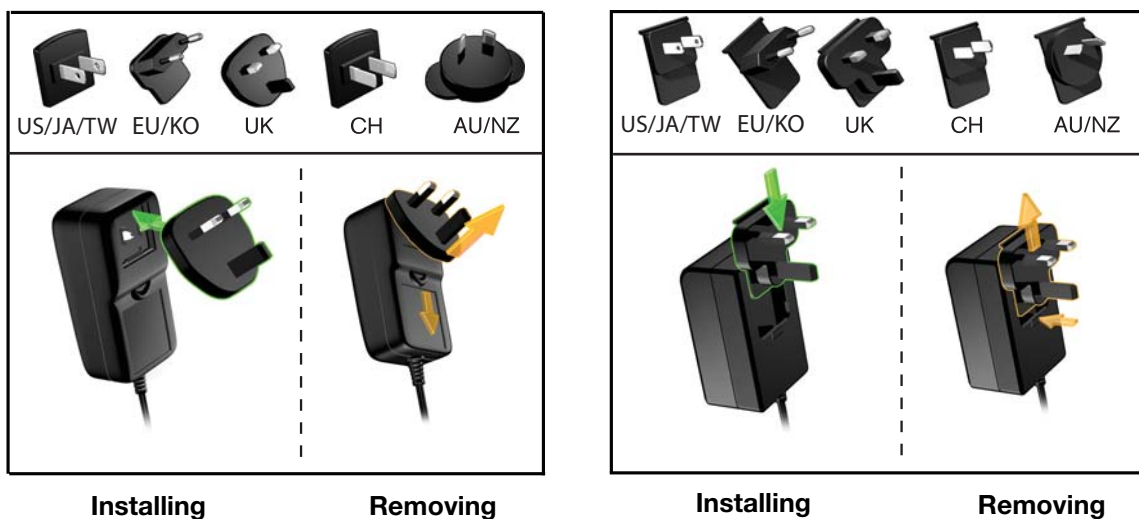


Figure 3. Connecting the My Book Drive

Depending on your region, you may need to change to the power adapter, as illustrated below.



## Installing the Drive

The following topics provide directions on installing the drive for the first time. Continue with the section below that applies to your operating system:

- “Installing on Windows XP” on page 8
- “Installing on Windows Vista/Windows 7” on page 10

*Note:* For information about installing the drive on a Mac, see “Using the Drive with a Mac” on page 45.

### Installing on Windows XP

1. After you physically connect the drive as shown in Figure 3 on page 7, the Found New Hardware Wizard screen displays. Click **Cancel** to bypass the wizard.

*Note:* The WD SmartWare software will install the appropriate driver for this drive.

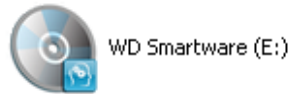


Figure 4. Found New Hardware Wizard

2. If Autorun (AutoPlay) is enabled on your computer, the Welcome to WD SmartWare screen displays. If a Flash Player is installed on your computer, the screen is animated. Continue to step 4.



3. If Autorun (AutoPlay) is disabled on your computer:
  - a. Open **My Computer**.
  - b. Double-click the WD SmartWare virtual CD, which is listed under Devices with Removable Storage.



*Note:* WD Smartware software is provided in the form of a virtual CD (VCD) drive on your My Book drive. The VCD displays on your desktop and behaves just like a physical CD. To view the contents of the VCD, such as the documentation and some extra programs, right-click and select **Open**.

The Welcome to WD SmartWare screen displays. If a Flash Player is installed on your computer, the screen is animated.



4. Continue with "Getting Started With WD SmartWare Software" on page 12.

*Note:* If you do not want to install the WD SmartWare software, see "Installing an SES Driver" on page 57 instead.

## Installing on Windows Vista/Windows 7

After you physically connect the drive as shown in Figure 3 on page 7, two or three screens may pop up, depending on your computer setup.

1. If Autorun (AutoPlay) is enabled on your computer:
  - a. On the Found New Hardware screen, click **Cancel**.



Figure 5. Found New Hardware Screen

- b. In the AutoPlay screen, click **Run WDSmartWare.exe**.



Figure 6. AutoPlay Screen

The Welcome to WD SmartWare screen displays. If a Flash Player is installed on your computer, the screen is animated.



- c. Continue to “Getting Started With WD SmartWare Software” on page 12.  
*Note:* If you do not want to install the WD SmartWare software, see “Installing an SES Driver” on page 57 instead.
- 2.** If Autorun (AutoPlay) is disabled on your computer:
- a. In the Found New Hardware screen (see Figure 5 on page 10), click **Cancel** to bypass the wizard. WD SmartWare installs the driver for this drive.
  - b. Open **Computer**. The WD SmartWare virtual CD drive is listed under Devices with Removable Storage.



- c. Double-click the WD SmartWare virtual CD.  
*Note:* WD Smartware software is provided in the form of a virtual CD (VCD) drive on your My Book drive. The VCD displays on your desktop and behaves just like a physical CD. To view the contents of the VCD, such as the documentation and some extra programs, right-click and select **Open**.



The Welcome to WD SmartWare screen displays. If a Flash Player is installed on your computer, the screen is animated:



- d. Continue to “Getting Started With WD SmartWare Software” in the following section.

*Note:* If you do not want to install the WD SmartWare software, see “Installing an SES Driver” on page 57 instead.

## Getting Started With WD SmartWare Software

After you select either **Back Up Files**, **Set Up Drive**, or **Retrieve a backup**, the software will guide you through a simple two-step WD SmartWare software installation process. If a newer version of software is available the system will automatically alert you. WD highly recommends using the latest version of software, especially on a new installation.

After the installation is complete, the WD SmartWare software will either:

- Guide you through:
  - Backing up your files (see Figure 7 on page 13 and “About Backing Up Your Computer Files” on page 17)
  - Setting up your drive security (see Figure 8 on page 13 and “Password Protecting Your Drive” on page 29)
- Display the Home screen (see Figure 9 and “WD SmartWare Overview” on page 14)

*Note:* The initial Backup and Drive Settings screens only appear one time—the first time you install the WD SmartWare software on your computer. After that, launching the software displays the Home screen so you can choose what you want to do.



Figure 7. Initial Backup Screen



Figure 8. Initial Drive Settings Screen



Figure 9. Home Screen

## WD SmartWare Overview

WD SmartWare software is an easy-to-use tool that gives you the power to:

- Secure your drive—In drive settings, create a password to protect your encrypted drive from unauthorized access or data theft.
- Protect your data automatically—Automatic, continuous backup instantly makes a copy whenever you add or change a file.

*Note:* Automatic backup protection is continuous for as long as your My Book drive is connected to your computer. Then, whenever you disconnect and reconnect the drive to your computer, the WD SmartWare software rescans your computer for new or changed files and resumes automatic, continuous backup as before.

- See your backup as it happens—Seeing is believing. Visual backup organizes and displays your content into categories and shows the progress of your backup.
- Retrieve lost files effortlessly—Bring back your valuable data to its original location whether you've lost all your data or just overwritten an important file.

## WD SmartWare Home Screen

The WD SmartWare Home screen (available after installation and the initial backup and security setup) provides four tab-selected options:

- Home—Provides a Content Gauge that shows the capacity and content of each hard drive in or connected to your computer (see Figure 9)
- Backup—Manages existing backups or creates new backups of your important data, including movies, music, documents, e-mail, and pictures (see Figure 10 on page 18)

- **Retrieve**—Brings back valuable data that has been lost or overwritten (see Figure 13 on page 26)
- **Settings**—Manages security, diagnostics, power settings, and backup parameters (see Figure 11 on page 22)

On the Home screen, you can modify the primary drive being categorized with the drop-down selection box under the name of your computer. By selecting a different drive, the system will identify the categories of files on that drive. Then click the:

- **Backup** tab to back up files from the selected drive to your My Book drive
- **Retrieve** tab to retrieve backed up files from your My Book drive to any location on your computer

In the Content Gauge for your computer's hard drive, all of your files that are available for backup are shown against a blue background in six categories where:

This file category	Includes files with these extensions
<b>Documents</b>	.doc, .txt, .htm, .html, .ppt, .xls, .xml, and other document extensions
<b>Mail</b>	.mail, .msg, .pst., and other mail extensions
<b>Music</b>	.mp3, .wav, .wma, and and other music extensions
<b>Movies</b>	.avi, .mov, .mp4, and other movie extensions
<b>Pictures</b>	.gif, .jpg, .png, and other picture extensions
<b>Other</b>	Others that do not belong in the five main categories

For a complete list of all included file extensions, search for Answer ID 3644 in the WD Knowledge Base at <http://support.wdc.com>.


Note that:

- The **System** category, shown against a dark gray background, includes all of your operating system files that are not available for backup. Files that are not backed up include system files, program files, applications, and working files like .tmp and .log files.
- The **Retrieved** category, also shown against a dark gray background, includes the files that you have retrieved from a prior backup. They, too, are not available for backup.
- Hovering the cursor over a category displays the number of files in the category.

In the Content Gauge for your My Book drive, the **Additional Files** category includes all of the files shown in the used space portion of your drive properties. This space is not available for backups.

Note: The small number of files that are shown in the **Additional Files** category when you first install the WD SmartWare software—before performing your first backup—represent the system and hidden files that your computer's operating system put there when you installed the drive.

## Viewing the Info/Online Help Topics

Each WD SmartWare screen provides easy access to online help information to quickly guide you through your backup, retrieve, and settings tasks. Whenever you are uncertain about what to do on any screen, just click the info/online help icon  in the upper-right corner of any screen:



To close the info/help screen after reading the online help, click the X icon in the upper-right corner of the screen.

## 3

## Backing Up Your Computer Files

This chapter includes the following topics:

- [About Backing Up Your Computer Files](#)
- [Backing It All Up](#)
- [Advanced Backup Capabilities](#)

### About Backing Up Your Computer Files

The WD SmartWare software automatically and continuously backs up all of the content (music, movies, photos, documents, e-mail, and other files) on your computer to your My Book drive.

Note: One installation of the WD SmartWare software supports up to three backup drives that are configured with WD SmartWare software.

After the WD SmartWare software categorizes the different types of content you own, simply clicking the **Run Backup** button will back all of them up. Advanced users can select specific types of content to back up.

After performing a backup, the WD SmartWare software protects your files by backing up any:

- New file that is created on your computer or copied to your hard drive
- Existing file that is changed in any way

This protection is automatic—the WD SmartWare software does it for you without any action on your part—just make sure to leave your My Book drive connected to your computer.

Note: Automatic backup protection is continuous for as long as your My Book drive is connected to your computer. Then, whenever you disconnect and reconnect the drive to your computer, the WD SmartWare software rescans your computer for new or changed files and resumes automatic, continuous backup as before.

Additionally, the Backup screen (see Figure 10 on page 18) provides:

- Content Gauges for your computer's disk drives, so you can see the number of files and the storage size for each content category
- A **Refresh View** button for rescanning the drive and verifying accurate Content Gauge counts after adding or changing files on your computer
- A **Detailed View** content box that you can use to select specific categories of files or folders to back up, with an **Apply Changes** button for implementing your selections
- **Run Backup** and **Pause Backup** buttons for starting and pausing backups



Figure 10. Backup Screen

In the Content Gauges for your computer's disk drives, the categories of files that would be included in the backup if you click **Run Backup** are shown:

- Light blue background in the Content Gauge for your computer's hard drive represents the original files that are available for backup.
- Gray background in the Content Gauge for your My Book drive represents the potential backup copies of the original files.
- Dark blue background identifies categories of files that have been backed up

In the Content Gauge for your My Book drive, the **Additional Files** category includes all of the files shown in the used space portion of your drive properties. This space is not available for backups.

In the Content Gauges and the **Detailed View** content box:

This file category	Includes files with these extensions
<b>Documents</b>	.doc, .txt, .htm, .html, .ppt, .xls, .xml, and other document extensions
<b>Mail</b>	.mail, .msg, .pst., and other mail extensions
<b>Music</b>	.mp3, .wav, .wma, and other music extensions
<b>Movies</b>	.avi, .mov, .mp4, and other movie extensions
<b>Pictures</b>	.gif, .jpg, .png, and other picture extensions
<b>Other</b>	Others that do not belong in the five main categories

For a complete list of all included file extensions, search for Answer ID 3644 in the WD Knowledge Base at <http://support.wdc.com>.

Note that:

- The **System** category, shown against a dark gray background, includes all of your operating system files that are not available for backup. Files that are not backed up include system files, program files, applications, and working files like .tmp and .log files.
- The **Retrieved** category, also shown against a dark gray background, includes the files that you have retrieved from a prior backup. They, too, are not available for backup.

Hovering the cursor over a category displays the number of files in the category.

To back up other hard drives on your computer, click the **Home** tab and select an alternative drive from the drop-down menu.

## Backing It All Up

To back up all of your computer files:

1. Click the **Backup** tab to display the Backup screen (see Figure 10 on page 18).
2. Click **Run Backup** to back up all of your files.
3. During the backup:
  - The Backup screen displays a progress bar and a message indicating the amount of data that has been backed up.
  - The blue background in the Content Gauge for your computer's hard drive changes to yellow/amber for all of the files that have not yet been backed up.
  - The gray background in the Content Gauge for your My Book drive changes to blue for each category as the backup completes.
  - You can continue to set up your drive or perform any other functions since the WD SmartWare software will back up all of your files in the background.
  - A **Pause Backup** button is available for you to pause the backup.
4. Appearance of a backup successfully finished message means that the backup completed normally.

If any files could not be backed up, their representation remains yellow/amber in the Content Gauge for your computer's hard drive and the WD SmartWare software displays a:

- Caution message indicating the number of files involved
- **View** link that you can click to see a list of the files and the reasons they were not backed up

Some applications and running processes can keep files from being backed up. If you cannot determine why some of your files were not backed up, try:

- a. Saving and closing all of your open files.
- b. Closing all running applications—including your e-mail program and web browser.



**Important:** Appearance of a Caution message indicating that your drive is full means that there is not enough free space on the drive to complete the backup.

The best long-term solution would be to relegate the drive to long-term archive storage and:

- a. Click the **Home** tab to display the Home screen.
- b. Click the **WDStore** link in the WD Online box to view the WD Online Store website.
- c. Click **External Hard Drives** and select the best drive to suit your future requirements.

5. If you clicked **Pause Backup** at step 3, the **Stop backup?** confirmation prompt reminds you that the WD SmartWare software runs your backup job in the background, so you can continue using your computer for other things during the backup.

To continue, click either:

- **Continue Backup** to disregard your pause request and resume the backup
- **Stop Backup** to follow through with your pause request and stop the backup

## **Advanced Backup Capabilities**

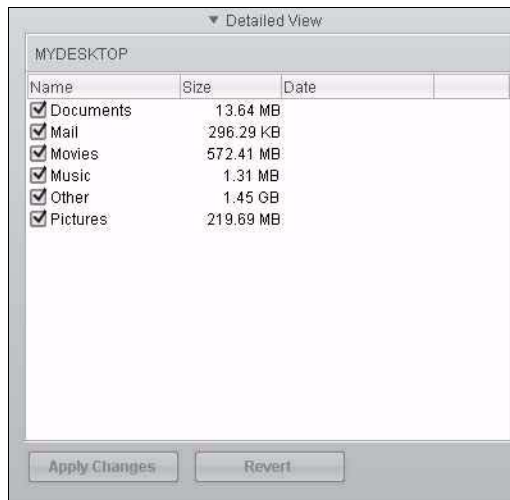
The advanced backup capabilities include:

- Selecting specific content to back up
- Changing the backup software settings:
  - Choosing the number of backup versions to keep
  - Pausing the backup until your computer is idle

## Selecting Specific Content to Back Up

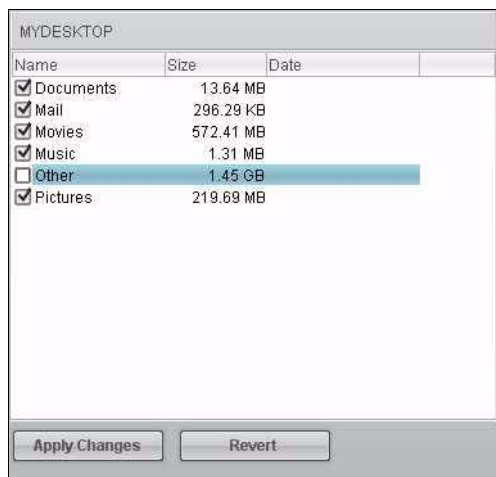
To back up some of your computer files:

1. On the Backup screen (see Figure 10 on page 18), select **Detailed View** to open the backup files content box:



2. In the backup files content box:
  - Select the check boxes for the categories of files that you want to include in the backup
  - Clear the check boxes for the categories of files that you want to exclude from the backup

Changing the selections activates the **Apply Changes** and **Revert** buttons:



3. Click **Apply Changes** to refresh the Content Gauge for your My Book drive.
4. Click **Run Backup** to back up the selected categories of files.

## Changing the Backup Software Settings

To optimize your backup, you can:

- Specify the number of backup versions to keep for each file
- Pause backups until your computer is idle

In order to configure these backup options:

1. Click the **Settings** tab to display the Settings screen (see Figure 11).

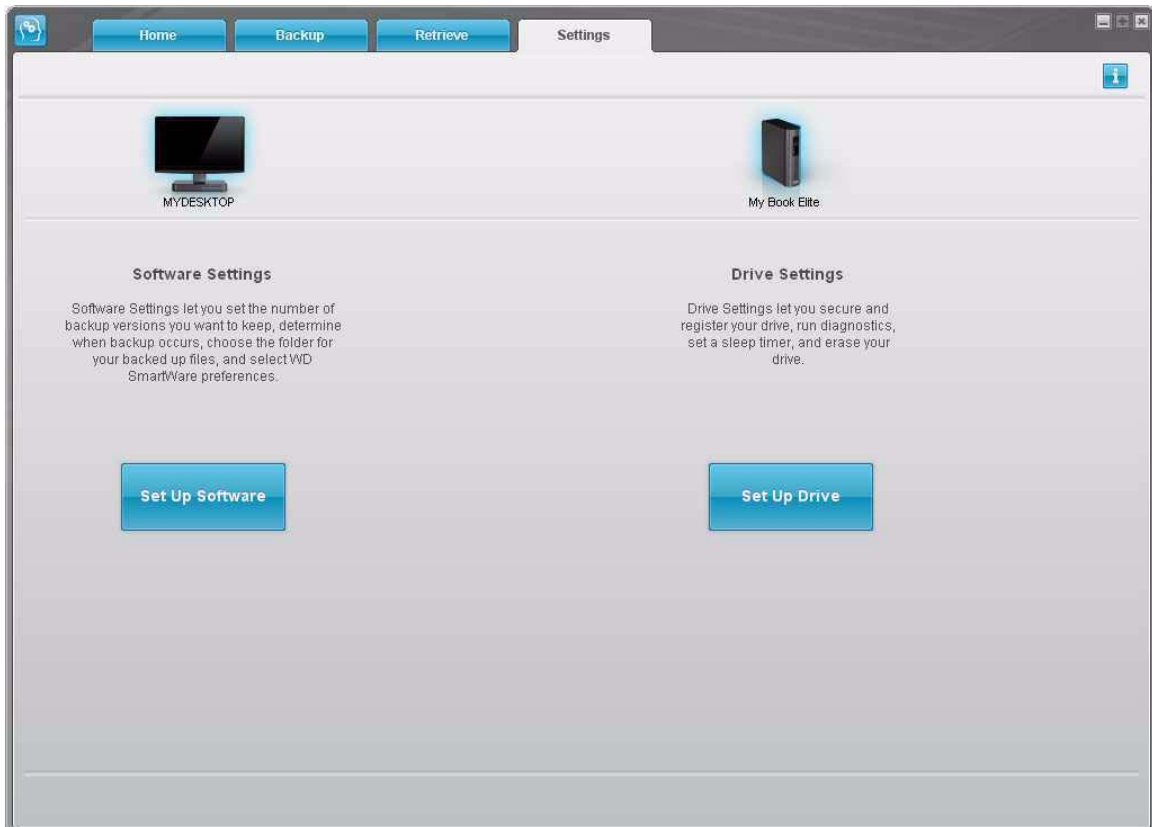


Figure 11. Settings Screen

2. Click **Set Up Software** to display the Software Settings screen (see Figure 12 on page 23).

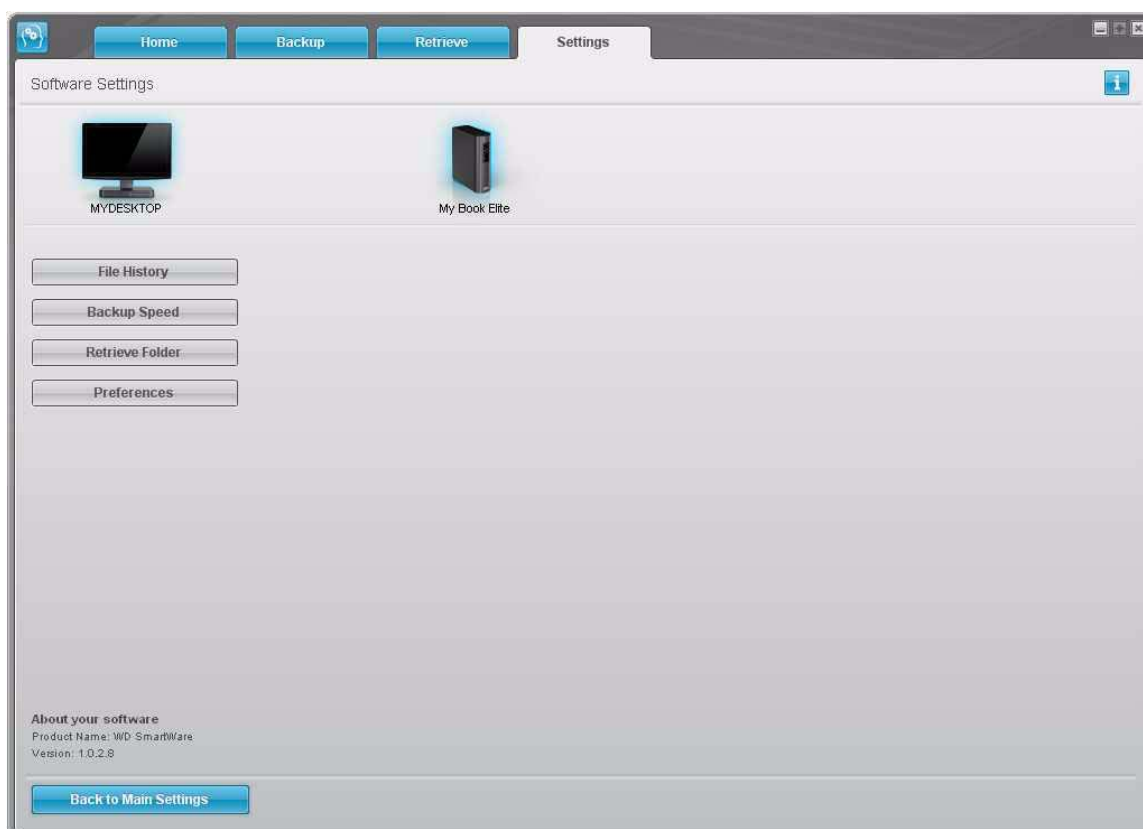


Figure 12. Software Settings Screen

**Specifying the Number of Backup Versions.** The WD SmartWare software enables you to keep up to 25 older versions of each file. If you overwrite or delete a file by accident, or want to see the file a couple of versions ago, the WD SmartWare software has a copy for you.

You will always have the most-recent specified number of versions of each file available for retrieves, and you can choose to keep between 1 and 25 versions.

Keeping more versions:

- Improves your ability to retrieve files from a longer back-in-time period
- Consumes more disk space

To specify the number of backup versions that you want to keep for each file:

1. On the Software Settings screen (see Figure 12), click **File History** to display the Set File History dialog:

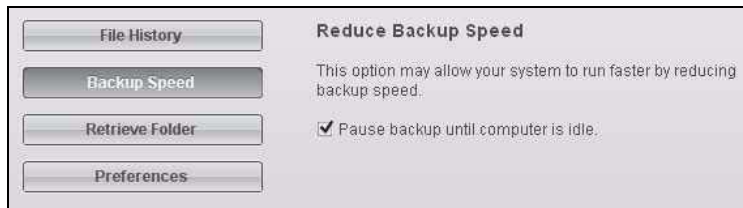


2. Specify the number of file versions that you want to keep (from 1 to 25) in the **Enter the number of backup versions to keep for each file** box.
3. Click **Apply** to save and implement the new number of backup versions.

**Pausing Backups Until Your Computer is Idle.** A large backup can take a lot of time, and can consume a lot of your system processing resources. Even with the WD SmartWare software running in the background, a backup can reduce your computer's response to other tasks.

Enabling the Backup Speed option directs the WD SmartWare software to pause backups until your computer is completely idle. This is the default configuration of the WD SmartWare software.

1. On the Software Settings screen (see Figure 12 on page 23), click **Backup Speed** to display the Reduce Backup Speed dialog:



2. Select or clear the **Pause backup until computer is idle** check box to enable or disable the Backup Speed option.

## Retrieving Backed Up Files

This chapter includes the following topics:

- [About Retrieving Files](#)
- [Retrieving a File](#)
- [Retrieving a Folder](#)
- [Retrieving an Earlier Version of a File or Deleted Files](#)
- [Retrieving All of Your Content](#)

### About Retrieving Files

The WD SmartWare software makes it easy for you to retrieve files that have been backed up on your My Book drive and either:

- Restore them to their original locations on your computer
- Copy them to a special retrieve folder

Retrieve is generally a five-step process:

1. Choose the drive to retrieve content from on the Home screen.
2. Choose the backup you want to retrieve content from. (This is only required if you have created several different backups on your My Book drive.)
3. Choose whether content will be retrieved to a special retrieval folder or to the original location.
4. Choose what content to retrieve, either files, folders, or everything.
5. Retrieve the content.

### Retrieving a File

After selecting the drive on the Home screen, you can retrieve files from your My Book drive. To retrieve a file or folder from your drive:

1. Click the **Retrieve** tab to display the Retrieve screen (see Figure 13 on page 26).
2. In the **Backed Up Volumes** box, select the WD SmartWare volume that you want to retrieve a file or folder from and click **Select Destination** to display the Select a destination for retrieved files screen (see Figure 14 on page 26).
3. On the Select a destination for retrieved files screen:

---

#### IF you want to copy your retrieved content to . . .

#### THEN . . .

Its original location,

- a. Select the **To the Original Places** option.
- b. Click **Select Files** to display the Select content to retrieve... screen and proceed to step 4 on page 27.

A retrieved content folder,

- a. Select the **In the Retrieved Content Folder** option.
  - b. If you want to specify a different retrieve folder, click **Browse** and use the browse function to identify the new retrieve folder.
  - c. Click **Apply** to save and implement the new retrieve folder.
  - d. Click **Select Files** to display the Select content to retrieve... screen and proceed to step 4 on page 27.
-

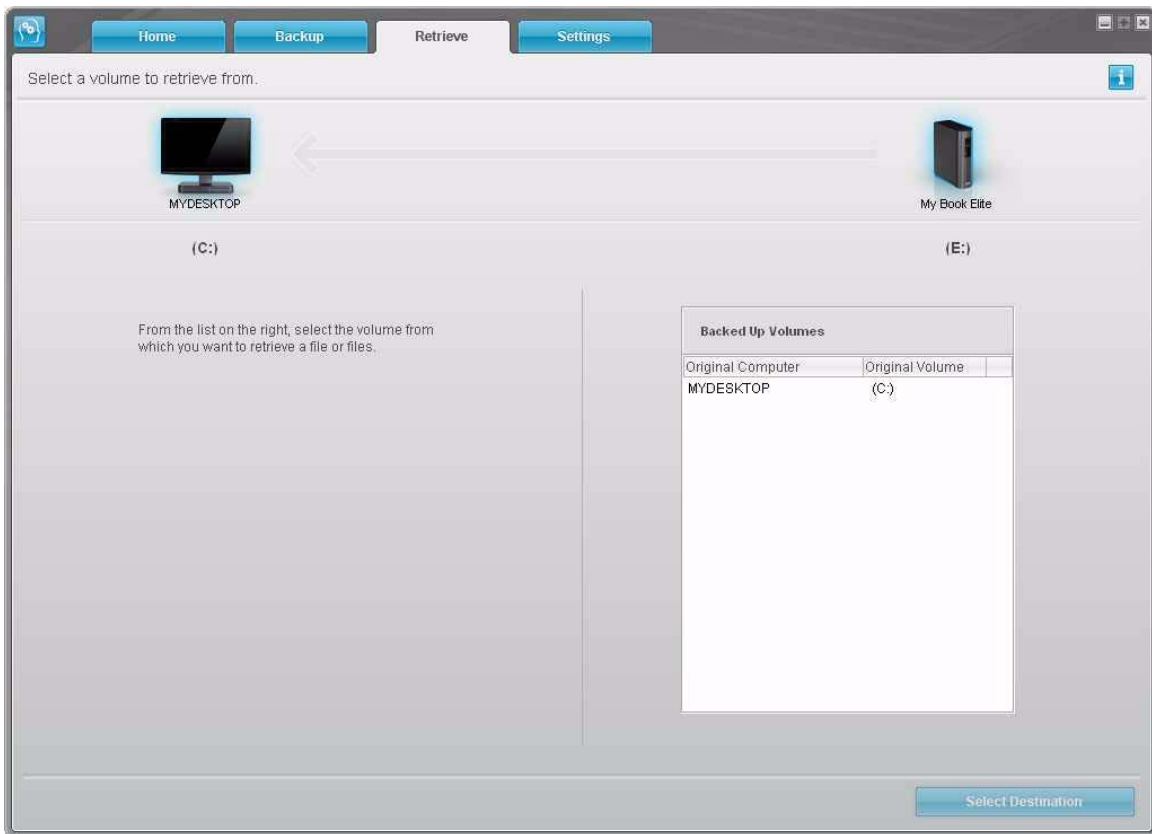


Figure 13. Retrieve Screen

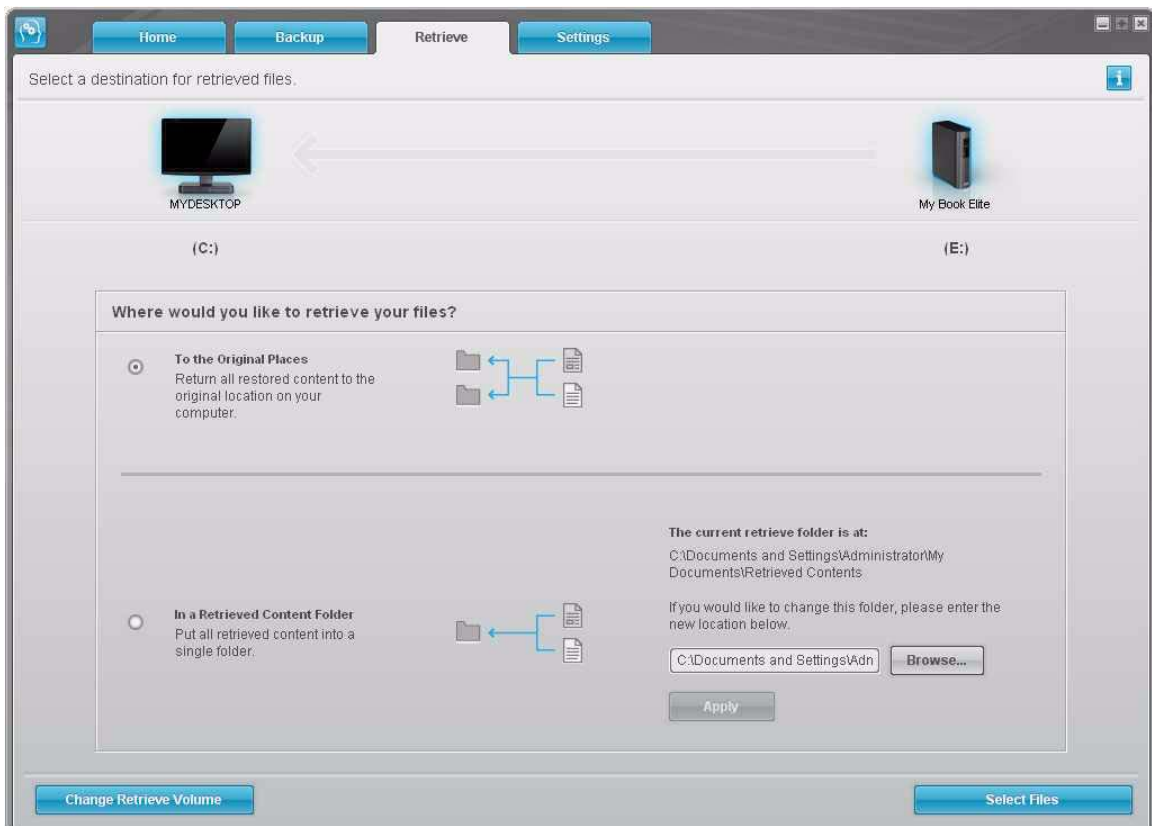


Figure 14. Select a Destination for Retrieved Files Screen

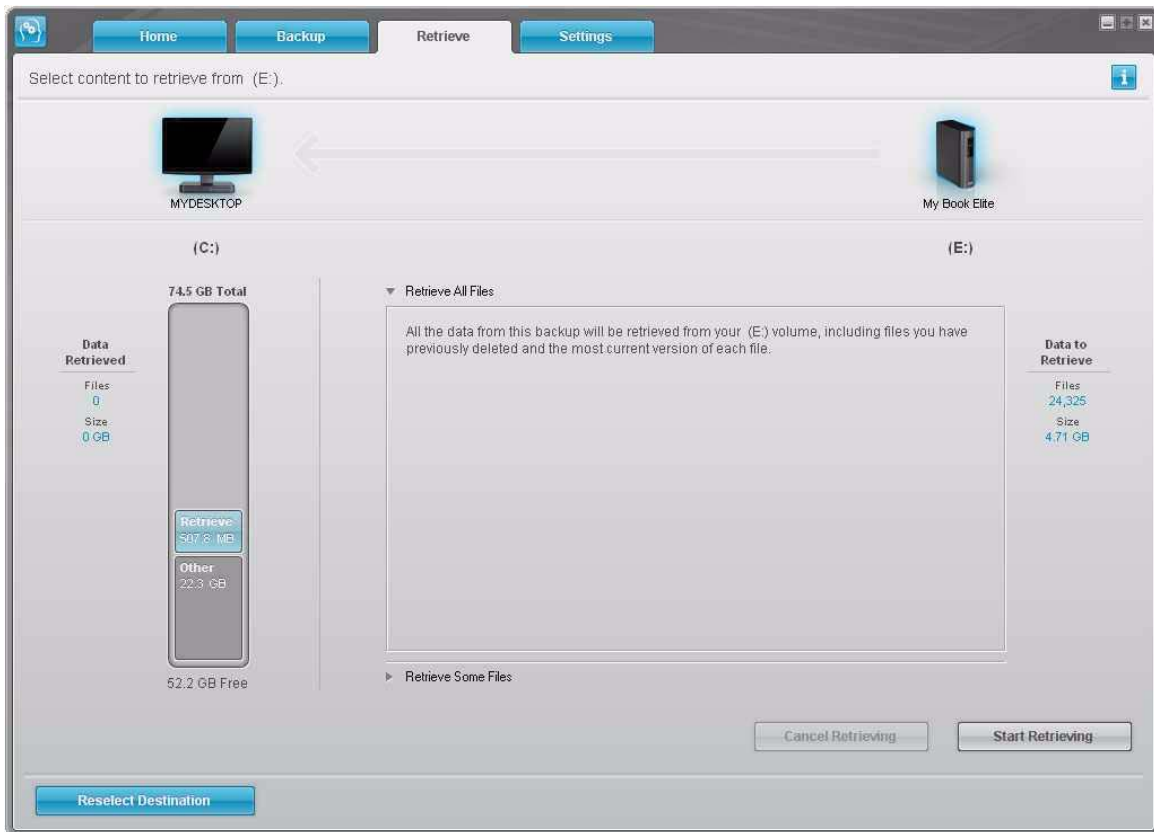


Figure 15. Select Content to Retrieve Screen

4. On the Select content to retrieve... screen, select **Retrieve Some Files** to display the retrieve files selection box (see Figure 16).

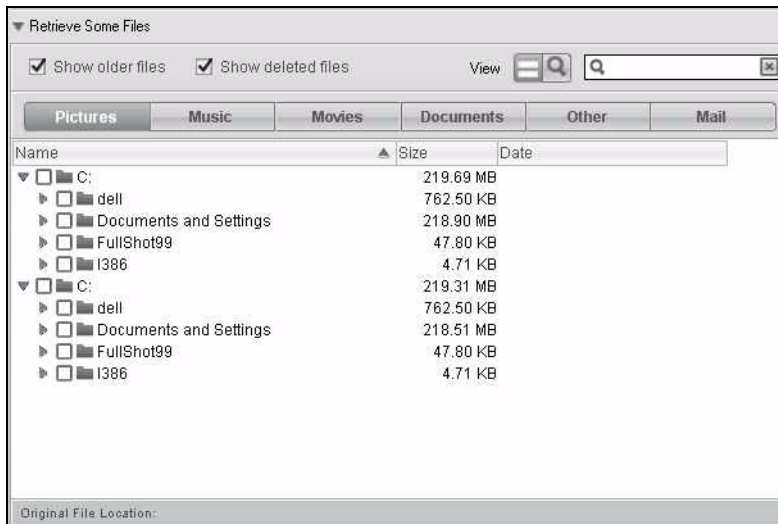


Figure 16. Retrieve Files Selection Box



5. Navigate through the folder structure to find the content of interest. Also, you can use the search box by typing the name (or partial name) of the file or folder you are looking for:
  - Click the appropriate file category button to list the files by category:
    - Pictures
    - Music
    - Movies
    - Documents
    - Other
    - Mail
  - Select the **View** icon to list individual files.
  - Type all or part of the file name in the search box to locate the file and press **Enter** to initiate the search. To eliminate the search filter, delete all of the text in the search box and press **Enter**.
  - Select the check box for the file or folder that you want to retrieve.
6. Click **Start Retrieving**.
7. During the retrieve:
  - The Retrieve screen displays a progress bar and a message indicating the amount of data that has been copied to the specified retrieve location.
  - A **Cancel Retrieving** button is available for you to stop the retrieve.
8. A **Retrieval accomplished** message signifies completion of the retrieve.

A **Partial retrieve accomplished** message means the file you selected for the retrieve was not copied to the specified retrieve location. In this case, either a:

  - **Files Not Retrieved** message provides the number of files that were not retrieved and a link to a failed-to-retrieve information screen. Click the **View files** link to see the list of files and the reasons they were not retrieved.
  - **Destination is full** message means that your computer does not have sufficient disk space to complete the retrieve.

## Retrieving a Folder

To retrieve a folder from your drive, and all of the content within a folder, which may be across multiple categories, in the retrieve files selection box (see Figure 16 on page 27), right-click the folder of interest and choose **Select folder in all content categories**.

## Retrieving an Earlier Version of a File or Deleted Files

In the retrieve files selection box (see Figure 16 on page 27), check the **Show deleted files** box and/or the **Show older files** box. Now, when selecting content to retrieve, you can select individual files that were overwritten or deleted. Likewise, retrieving entire folders in this mode will retrieve older versions and deleted files as well.

## Retrieving All of Your Content

On the Select content to retrieve... screen (see Figure 15 on page 27), choose the **Retrieve All Files** option, which will retrieve content across all categories and copy them to either their original locations or the Retrieve Contents folder.

## 5

## Locking and Unlocking Your Drive

This chapter includes the following topics:

- [Password Protecting Your Drive](#)
- [Unlocking Your Drive](#)
- [Turning Off the Drive Lock Feature](#)
- [Changing Your Password](#)

### Password Protecting Your Drive

You should password protect your drive if you are worried that someone else will gain access to your drive and you do not want them to be able to access your content on the drive.

**CAUTION! The WD SmartWare software uses your password to electronically lock and unlock your drive. If you forget your password, you will not be able to access the data that is on your drive or write new data to it. You will have to erase the drive before you can use it again.**

You can reach the Security pages for password management during the initial getting started process or from the **Settings** tab and the Drive Settings screen within the WD SmartWare application. Once you are on the password page, you can:

- Create a password
- Change a password
- Eliminate the need for a password

To create a password and keep others from accessing the files on your drive, as an example from the Settings tab:

1. Click the **Settings** tab to display the Settings screen (see Figure 11 on page 22).
2. Click **Set Up Drive** to display the Drive Settings screen (see Figure 17 on page 30).



Figure 17. Drive Settings Screen

3. Click **Security** to display the Set Security dialog:



4. Type your password in the **Choose a password** box.
5. Retype your password in the **Verify password** box.
6. Type a hint to help remind yourself of your password in the **Password hint** box.
7. Read the warning about the possibility of data loss if you forget your password.
8. Click the **I understand** check box to signify that you accept the risk.

9. Click **Save Security Settings** to save your password and enable password protection for your drive.

**CAUTION!** After creating a password, the drive remains unlocked for as long as you continue your current work session. Then, the WD SmartWare software:

- Locks the drive when you shut down your computer, disconnect your drive, or the computer goes into the sleep mode
- Requires you to type your password to unlock the drive when you restart your computer or reconnect your drive

## Unlocking Your Drive

After you have created a password to keep others from accessing the files on your drive, you will have to type your password to unlock the drive whenever:

- You shut down and restart your computer
- You disconnect and reconnect the drive to your computer
- Your computer exits the sleep mode

You will have to do this even if you do not have the WD SmartWare software installed on your computer.

## Unlocking Your Drive With the WD SmartWare Software

Whenever you shut down and restart your computer, or disconnect and reconnect the drive to your computer, the WD SmartWare software displays the **Unlock My Book** prompt:



To unlock your drive:

1. Type your password in the **Password** box.  
If you provided a password hint when you created your password, click the **Password hint** pointer to see the hint.
2. Click **Unlock** to unlock your drive and enable the WD SmartWare software Backup, Retrieve, and Drive Settings functions.

Clicking **Cancel** leaves the drive locked and inhibits access to the data on the drive and the WD SmartWare Backup, Retrieve, and Drive Settings functions.

## Unlocking Your Drive Without the WD SmartWare Software

Whenever you connect your password-protected drive to a computer that does not have the WD SmartWare software installed, you can still access the virtual CD partition on your drive, and install the WD SmartWare software as usual. You will not be able to access the data portion of your drive.

To unlock the drive without the WD SmartWare software installed:

1. Start the WD SmartWare Drive Unlock utility by either:
  - Using your computer's file management utility to open the WD SmartWare virtual CD and double-clicking the Unlock.exe file
  - Clicking **Start > My Computer** and double-clicking the WD SmartWare icon under **Devices with Removable Storage**.



2. Type your password in the **Password** box.  
If you provided a password hint when you created your password, click the **Password hint** pointer to see the hint.
3. Click **Unlock** to unlock your drive.  
If you click **Exit**, you will not be able to access the files on your drive.
4. At the **Your drive is now unlocked** prompt, click **Exit** to close the WD SmartWare Drive Unlock utility screen.

## Turning Off the Drive Lock Feature

To remove password protection from your drive:

1. Click **Security** on the Drive Settings screen (see Figure 17 on page 30) to display the Your Drive is Secure dialog:



2. Type your password in the **Password** box.
3. Select the **Remove security** option.
4. Click **Update Security Settings** to remove password protection from your drive and redisplay the Set Security screen.

## Changing Your Password

To change your password:

1. On the Your Drive is Secure dialog, select the **Change password** option and:
  - a. Type your new password in the **New password** box.
  - b. Retype your new password in the **Verify password** box.
  - c. Type a hint to help remind yourself of your new password in the **New password hint** box.
2. Click **Update Security Settings** to change your password.


## 6

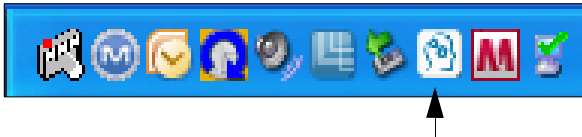
## Managing and Customizing Your Drive

This chapter includes the following topics:

- WD SmartWare Icon
- Opening WD SmartWare Software
- Checking Status and Temperature
- Monitoring Icon Alerts
- Disconnecting the Drive Safely
- Customizing Your Software Settings
- Customizing Your Drive Settings
- Uninstalling the WD SmartWare Software

### WD SmartWare Icon

After you have installed the WD SmartWare software (see “Getting Started With WD SmartWare Software” on page 12), the WD SmartWare icon  displays in the Windows task bar.




Clicking the icon enables you to perform the following actions:

- Launch the WD SmartWare software
- Check the status and temperature of the drive
- Safely disconnect the drive
- Monitor alerts

The next few sections describe how to use the icon and alternative methods to perform these actions, as well as how to unlock the My Book Elite manually.

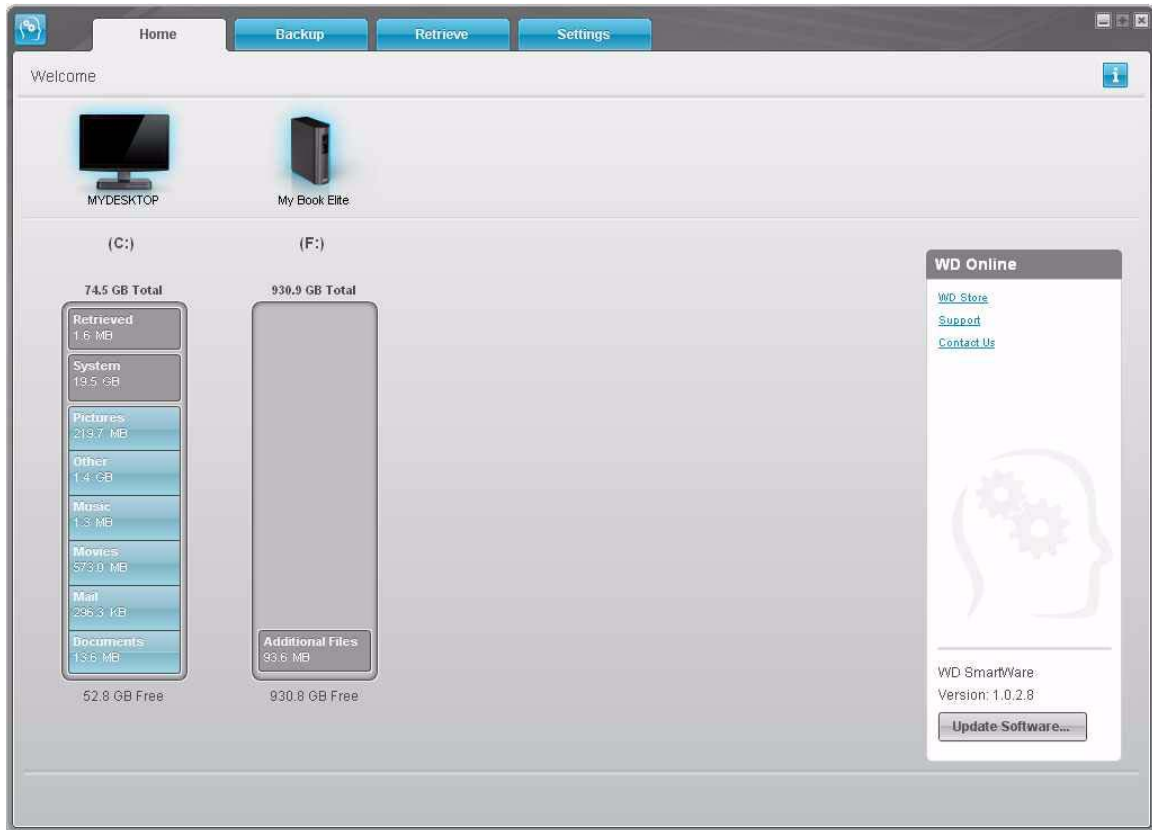
### Opening WD SmartWare Software

If the WD SmartWare software does not open automatically when you log in to your computer, you can access it in the following ways:


- If the software has been closed, click **Start > (All) Programs > WD SmartWare > WD SmartWare**.
- If the WD SmartWare icon  is in the task bar, double-click the icon.


Note: You can also right-click or left-click the WD SmartWare icon  in the task bar and select **WD SmartWare**.

The WD SmartWare Home screen displays:





## Checking Status and Temperature

Mouse over the WD SmartWare icon  in the task bar to view drive capacity used and drive temperature, and to determine whether the drive is currently locked:

WD Drive Status			
Drive Name [Volumes]	Used	Locked	Temperature
 My Book Elite USB HDD [G:]	1%	No	OK

## Monitoring Icon Alerts

- If the WD SmartWare icon  in the task bar flashes green and white, the drive may be locked or is in a format that the WD SmartWare software does not understand (non-Windows format in a Windows environment).
- If the WD SmartWare icon  flashes red and white, the drive may be overheated. Power down the drive and let it cool for 60 minutes. Power it back on, and if the problem persists, contact WD Support.



## Disconnecting the Drive Safely

**CAUTION!** To prevent data loss, close all active windows and applications before shutting down or removing the drive.

### Using the System Tray

1. Right-click the WD SmartWare icon  in the system tray, and then click **Safely remove My Book Elite USB HDD:**



You may hear the drive power down as the Power LED flashes.

2. Wait for the LED to turn off before disconnecting the drive from the system.

### Using the Power Button

1. Press the **Power Button** on the My Book Elite unit.

You may hear the drive power down as the Power LED flashes

2. Wait for the LED to turn off before disconnecting the drive from the system.

## Customizing Your Software Settings

The WD SmartWare software makes it easy for you to quickly customize its own software settings for the best possible performance with your drive by:

- Specifying the number of backup versions that you want to keep for each file
- Inhibiting backups until times when your computer is idle
- Specifying a unique folder on your computer to store files retrieved from your drive
- Automatically:
  - Displaying the WD SmartWare Home screen whenever you connect your drive to your computer
  - Checking for WD SmartWare software updates

To customize your WD SmartWare software settings for the best possible performance with your drive, on the Software Settings screen (see Figure 12 on page 23):

IF you want to . . .	THEN click . . .	AND see . . .
Change the number of backup versions to keep for each file,	<b>File History</b>	“Specifying the Number of Backup Versions” on page 23.
Enable anytime backups or inhibit them until your computer is idle,	<b>Backup Speed</b>	“Pausing Backups Until Your Computer is Idle” on page 24.
Specify a path to a different retrieve folder,	<b>Retrieve Folder</b>	“Specifying a Different Retrieve Folder” on page 37.
Change the options that: <ul style="list-style-type: none"> <li>• Display the WD SmartWare Home screen whenever you reconnect drive to your computer</li> <li>• Check for software updates</li> </ul>	<b>Preferences</b>	“Setting the Preferences Options” on page 37.

## Specifying a Different Retrieve Folder

When you start a retrieve, you can choose whether you want to store the retrieved files in either:

- Their original locations on your computer
- A Retrieved Content folder

By default, the WD SmartWare software creates and uses a Retrieved Content subfolder in your My Documents folder. To specify a different folder:

1. Either create a new folder or determine which existing folder you want to use.
2. On the Software Settings screen (see Figure 12 on page 23), click **Retrieve Folder** to display the Set Retrieve Folder dialog:



3. Click **Browse** and use the browse function to identify the new retrieve folder.
4. Click **Apply** to save and implement the new retrieve folder.

## Setting the Preferences Options

When enabled, the Preferences options:

- Display the WD SmartWare Home screen whenever you reconnect your drive to your computer.

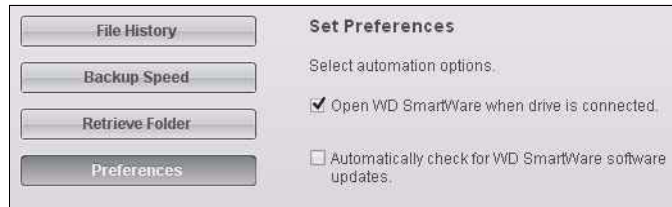
This is the default configuration of the WD SmartWare software, and it is recommended when you routinely leave your drive connected to your computer. You might want to disable this option and open the WD SmartWare Home screen whenever you need it if you routinely disconnect and reconnect your drive to your computer.

- Check for software updates.

This ensures that you are always using the most-recent software version.

To enable or disable the Preferences options:

1. On the Software Settings screen (see Figure 12 on page 23), click **Preferences** to display the Set Preferences dialog:



2. Select or clear the check boxes to enable or disable the Preferences options:

- **Open WD SmartWare when drive is connected**
- **Automatically check for WD SmartWare software updates**

## Customizing Your Drive Settings

The WD SmartWare software makes it easy for you to quickly customize the settings of your drive for the best possible performance.

- **Label**—Create a custom name (label) that appears in the “spine” area of your My Book drive.
- **Security**—Create, modify, and disable passwords that keep others from accessing the files on your drive.
- **Register Drive**—Registering your drive to receive free technical support during the warranty period and find out about software updates, product enhancements, and price discount opportunities.
- **Diagnostics**—Performing diagnostics and status checks to make sure your drive is working properly.
- **Sleep Timer**—Turning your drive off during periods of extended inactivity to conserve power and extend the life of the drive.
- **Drive Erase**—Erase all of the contents on the drive, including any password that has been set.

To customize your drive settings for the best possible performance with the WD SmartWare software, on the Drive Settings screen (see Figure 3 on page 30):

IF you want to . . .	THEN click . . .	AND see . . .
Create a custom name (label) that appears in the “spine” area of your My Book drive,	<b>Label</b>	“Specifying a Name For Your Drive” on page 39
Use a password to keep others from accessing the files on your drive,	<b>Security</b>	“Password Protecting Your Drive” on page 29.
Change your password,	<b>Security</b>	“Changing Your Password” on page 33.
Remove password protection from your drive,	<b>Security</b>	“Turning Off the Drive Lock Feature” on page 33.
Register your drive to receive free technical support during the warranty period and be kept up-to-date on the latest WD products,	<b>Register Drive</b>	“Registering Your Drive” on page 40.

IF you want to . . .	THEN click . . .	AND see . . .
Perform routine drive diagnostics and status checks,	<b>Diagnostics</b>	“Checking Drive Health” on page 43.
Specify an inactive time interval to turn off your drive,	<b>Sleep Timer</b>	“Setting the Drive Sleep Timer” on page 41.
Erase your drive so you can use it again if you have implemented password protection and then lost or forgotten your password,	<b>Drive Erase</b>	“Erasing Your Drive” on page 41.

## Specifying a Name For Your Drive

The custom label that you specify remains on your drive even when it is turned off or disconnected from your computer.

To specify a name for your drive:

1. On the Drive Settings screen (see Figure 17 on page 30), click **Label** to display the Set Label dialog:



2. Type your label in the **Set Label** box
3. Select or clear the **Invert label** check box to establish the label presentation that you want—dark text against a light background, or vice versa.
4. Click **Save Label Name** to apply the label to your drive.

## Registering Your Drive

The WD SmartWare software uses your computer's Internet connection to register your drive. Register your drive to be kept up-to-date on the latest WD products:

1. Make sure that your computer is connected to the Internet.
2. On the Drive Settings screen (see Figure 17 on page 30), click **Register Drive** to display the Register Drive dialog:

**Register Drive**

WD lets you register your drive to receive software update notifications and customer support.

First name\*

Last name\*

E-mail address\*

\*Required Field

Preferred language  
English

Yes, I want to receive communication from WD, including software updates for registered products, product improvement opportunities, and member discounts on WD products.

[WD privacy policy](#)

**Register Drive**

**About your drive**  
Product Name: My Book Elite  
Serial Number: WCAU4C321047  
Drive Size: 930 GB  
Operating System: Windows XP Service Pack 3  
Firmware Revision: 0.027

3. Type your first name in the **First name** box.
4. Type your last name in the **Last name** box.
5. Type your e-mail address in the **E-mail address** box.
6. Select your language in the **Preferred language** box.
7. Select or clear the **Yes, I want to receive communication...** check box to specify whether or not you want to receive e-mail notifications about software updates, product enhancements, and price discount opportunities.
8. Click **Register Drive** to register your drive.

## Setting the Drive Sleep Timer

The drive sleep timer turns off the power to your drive after a certain period of inactivity to conserve power and minimize long-term wear on the drive.

To specify the inactivity period for the sleep timer:

1. On the Drive Settings screen (see Figure 17 on page 30), click **Sleep Timer** to display the Set Sleep Timer dialog:



2. In the **Turn off Drive** box, select the inactivity time interval at which you want to turn off the drive.
3. Click **Set Timer** to save and implement your sleep timer selection.

## Erasing Your Drive

**CAUTION! Erasing your drive permanently deletes all of the data on your drive. Always make sure that you no longer need any of the data on your drive before erasing the drive.**

To erase your drive:

1. On the Drive Settings screen (see Figure 17 on page 30), click **Drive Erase** to display the Erase drive dialog:



2. Read the warning about the loss of data if you erase your drive.
3. Click the **I understand** check box to signify that you accept the risk.
4. Click **Drive Erase** to erase your drive.

Note: In addition to deleting all of the data on your drive, erasing your drive also removes your password. If you created a password to protect your drive, you will need to do it again after erasing the drive. (See “Password Protecting Your Drive” on page 29.)

## Uninstalling the WD SmartWare Software

You can easily uninstall the software. However, you will need to restart the Run Backup backup job manually after reinstalling the software as uninstalling deletes all existing backup job configurations. (See “Backing Up Your Computer Files” on page 17.)

Use your operating system’s Add or Remove Programs function to uninstall the WD SmartWare software from your computer:

### Windows XP

1. Click **Start > Control Panel**.
2. Double-click **Add or Remove Programs**.
3. Select **WD SmartWare** and click **Remove**.
4. Click **Yes** at the **Are you sure...** prompt.

### Windows Vista or Windows 7

1. Click **Start > Control Panel**.
2. Double-click **Programs and Features**.
3. Click **WD SmartWare** or the WD SmartWare icon and click **Uninstall/Change** at the top of the screen.
4. Click **Yes** at the **Do you wish to proceed...** prompt.

7

## Checking Drive Health

The data files on your My Book drive are important to you. The WD SmartWare software has several built-in diagnostic tools to help make sure that your drive is performing well. Run one of the following tests if you are concerned that your drive is not operating properly:

Diagnostic Tool	Description
Quick S.M.A.R.T. Status Check	<p>S.M.A.R.T. is a failure-prediction function that continuously monitors key internal performance attributes of the drive. A detected increase in drive temperature, noise, or read/write errors, for example, can provide an indication that the drive might be approaching a serious failure condition. With advanced warning, you could take precautionary measures, like moving your data to another drive, before a failure occurs.</p> <p>The result of a quick S.M.A.R.T. status check is a pass or fail evaluation of the drive's condition.</p> <p>The S.M.A.R.T. status check completes within a second or two.</p>
Quick Drive Test	<p>Your My Book drive has a built-in Data Lifeguard diagnostic utility that tests the drive for error conditions. The quick drive test checks the drive for major performance problems.</p> <p>The result of a quick drive test is a pass or fail evaluation of the drive's condition.</p> <p>The quick drive test can take several minutes to complete.</p>
Complete Drive Test	<p>The most comprehensive drive diagnostic is the complete drive test. It methodically tests each and every sector for error conditions, and inserts bad-sector markers as required.</p> <p>The complete drive test can take several hours to complete, depending on the size and data configuration of your drive.</p>

The best time to run the drive diagnostics and status checks is on a regular basis, before you encounter any problems with your drive. And, because they are so fast, running the quick S.M.A.R.T. status check and the quick drive test provides a high level of assurance with minimal inconvenience. Then, run all three whenever you encounter disk error conditions when backing up or retrieving files.

To run drive diagnostics and status checks:

1. On the Drive Settings screen (see Figure 17 on page 30), click **Diagnostics** to display the Run Diagnostics dialog:





2. Click the button for the test that you want to run:

- **Quick SMART Status**
- **Quick Drive Test**
- **Complete Drive Test**

## 8

## Using the Drive with a Mac

This chapter includes the following topics:

- Reformatting the Drive
- Installing on a Mac OS X Tiger/Leopard/Snow Leopard
- Enhancing Performance with WD +TURBO
- WD SmartWare Icon
- Opening WD SmartWare Software
- Dismounting the Virtual CD
- Safely Dismounting the Drive
- Displaying the Status, Serial Number, and Temperature
- Unlocking the Drive Manually
- Uninstalling WD SmartWare Software

The My Book Essential drive you purchased is preformatted as a single NTFS partition for compatibility with all updated Windows operating systems. To use the drive on Mac OS X operating systems, and to use Time Machine, if desired, you must reformat it to HFS+J.

### Reformatting the Drive

**CAUTION! Reformatting the drive erases all its contents. If you have already saved files on the drive, be sure to back them up before reformatting it.**

Go to [support.wdc.com](http://support.wdc.com). Refer to Knowledge Base Answer ID 3323 for reformatting the drive to Mac OS X format. (See ID 3645 for formatting a Mac to the NTFS file system for use on Windows XP and ID 3647 for formatting it for Windows Vista). See “Troubleshooting” on page 55 for more information about reformatting a drive.

If you reformat your drive for use with a Mac, follow the procedures below.

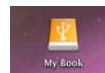
### Installing on a Mac OS X Tiger/Leopard/Snow Leopard

After you physically connect the drive as shown in Figure 3 on page 7, the WD SmartWare virtual CD mounts on the desktop and is listed under **Devices** in Finder.

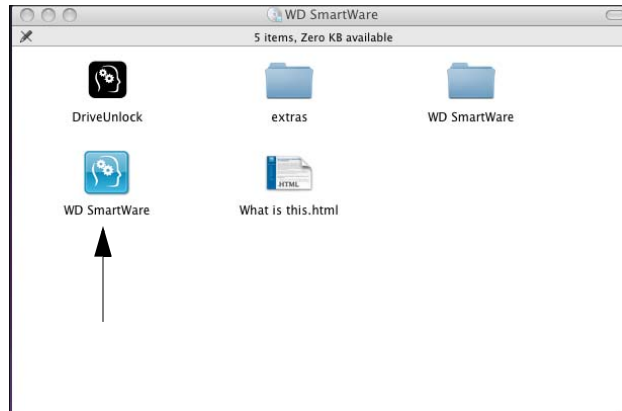


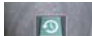
*Note:* WD Smartware software is provided in the form of a virtual CD (VCD) drive on your My Book drive. The VCD displays on your desktop and behaves just like a physical CD.

The My Book icon also displays on the desktop.

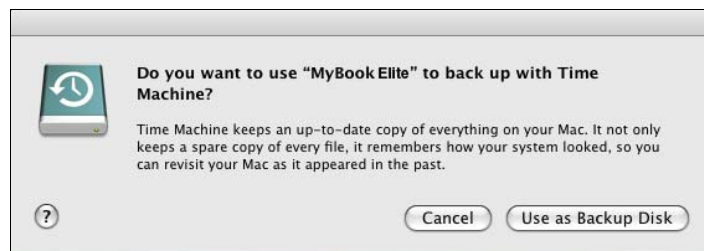


1. Double-click the WD SmartWare virtual CD, and then double-click the WD SmartWare icon on the screen that displays.



2. *Mac OS X Leopard and Snow Leopard only:* A message asks whether you want to use the My Book drive to back up with Time Machine.
  - If you do not want to use the Time Machine backup software, click **Cancel**.
  - If you want to use the Time Machine backup software, click **Use as Backup Disk**. The My Book icon now displays as .

*Note:* WD SmartWare software is fully compatible with Apple's Time Machine software. When using Time Machine, WD SmartWare software can still be used for password protecting the drive, registering the drive, and running diagnostics.



3. The Welcome to WD SmartWare screen displays. If a Flash Player is installed on your computer, the screen is animated.



4. Continue to “Getting Started With WD SmartWare Software” on page 12.

## Enhancing Performance with WD +TURBO

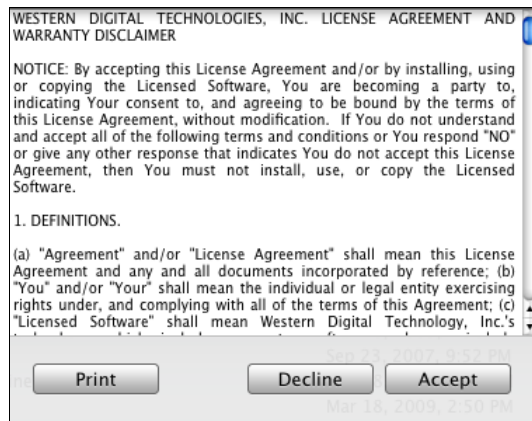
WD +TURBO is a utility available on the WD SmartWare VCD that you can install to improve the performance of the My Book drive on a Mac.

To install WD +TURBO:

1. Double-click the WD SmartWare icon on the desktop.
2. Double-click the extras folder.
3. Double-click the WD +TURBO Installer icon.



4. On the WD +TURBO Driver Installer screen, click **Install**.
5. To accept the license agreement, click **Accept**.




6. A message informs you that installing the drivers requires you to restart your computer to make them active. If you want to proceed, click **Yes**.



7. In the Password box, enter the password you normally enter to access this Mac.

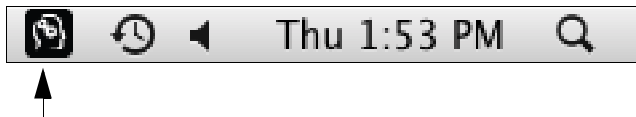


When installation is complete, the computer restarts.

*Note:* The My Book icon  on the desktop now looks like this: 

## WD SmartWare Icon

Once you have installed the WD SmartWare Software, the WD SmartWare icon displays in the bar at the top right of the screen.



Clicking the icon enables you to perform the following actions:

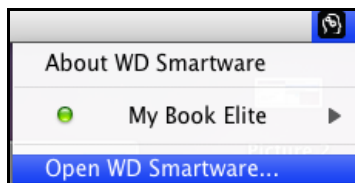
- Open the WD SmartWare software
- Safely dismount the drive and the virtual CD
- Check the remaining capacity of the drive
- Display the serial number of the drive
- Monitor drive status and temperature
- Unlock the drive manually

The sections below describe how to use the icon and alternative methods to perform these actions, as well as how to unlock the My Book drive manually.

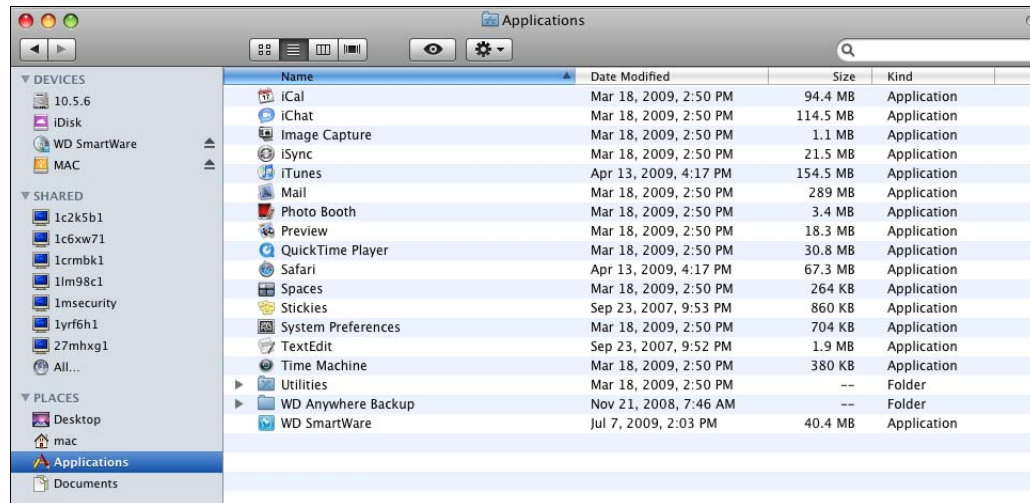
## Opening WD SmartWare Software

If the WD SmartWare software does not open automatically after it has been installed, you have two ways to open it:

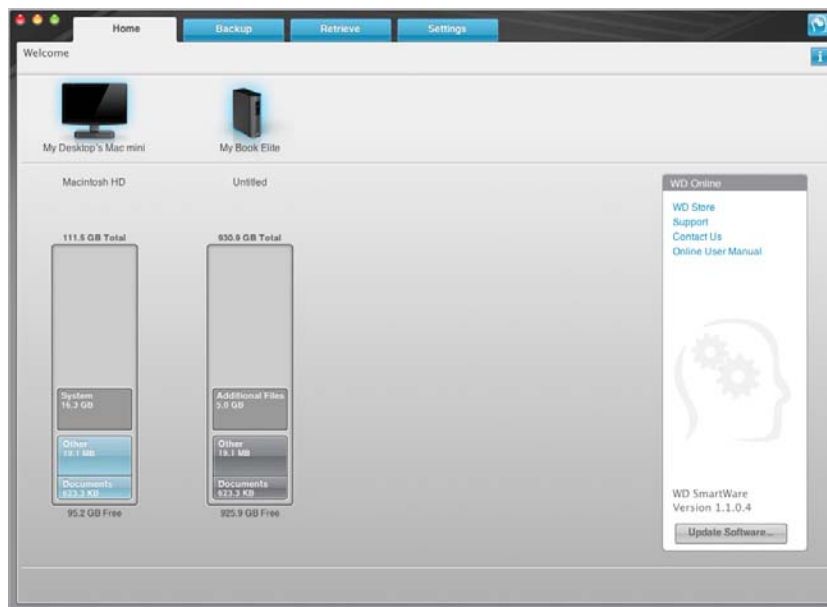
- Click the WD SmartWare icon  and select **Open WD SmartWare**.



- In Finder, double-click **WD SmartWare** in the Applications list:



The WD SmartWare Home screen displays.



On the Home screen, you can modify the primary drive being categorized with the drop-down selection box under the name of your computer. By selecting a different drive, the system will identify the categories of files on that drive. Then click the **Backup** or **Retrieve** tab to either back up from or retrieve files to a location other than your computer's main hard drive.

In the Content Gauge for your computer's hard drive, all of your files that are available for backup are shown against a blue background in categories that are based on the following folders on your computer:

- **Music**
- **Movies**
- **Pictures**
- **Mail**
- **Documents**
- **Other**

Each category includes all of the files in the represented folder except the **Other** category, which includes all of the files in all other folders on your computer.

Note that:


- The **System** category, shown against a dark gray background, includes all of your operating system files that are not available for backup. Files that are not backed up include system files, program files, applications, and working files.
- The **Retrieved** category, also shown against a dark gray background, shows the files that you have retrieved from a prior backup. They, too, are not available for backup.
- Hovering the cursor over a category displays the number of files in the category.

In the Content Gauge for your My Book drive, the **Additional Files** category includes all of the files shown in the used space portion of your drive properties. This space is not available for backups.

*Note:* The small number of files that are shown in the **Additional Files** category when you first install the WD SmartWare software—before performing your first backup—represent the system and hidden files that your computer’s operating system put there when you installed the drive.

## Dismounting the Virtual CD

You may want to dismount the virtual CD from the Mac. For example, if you have more than one My Book drive with the same software connected to your Mac, multiple My Book VCD icons display on your desktop. To clean up your desktop, you can dismount duplicate VCDs.

1. Click the WD SmartWare icon  to display a list of drives.
2. Select the My Book whose VCD you want to dismount, and then on the submenu, click **Unmount CD**.




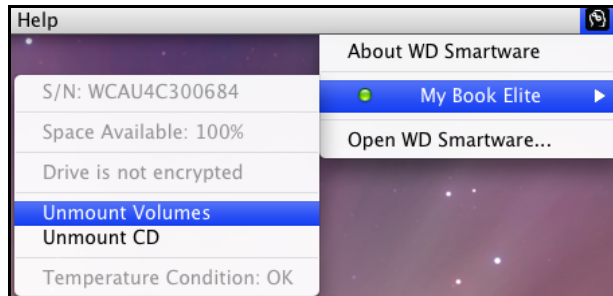
## Safely Dismounting the Drive

**CAUTION!** To prevent data loss, close all active windows and applications before shutting down or removing the drive.

You can safely dismount the drive from a Mac in three ways.

### Using the WD SmartWare Icon

1. Click the WD SmartWare icon  to display a list of drives.
2. Select the My Book, and then on the submenu, select **Unmount Volumes**. If the drive contains more than one volume, a prompt may ask you to select the volume.



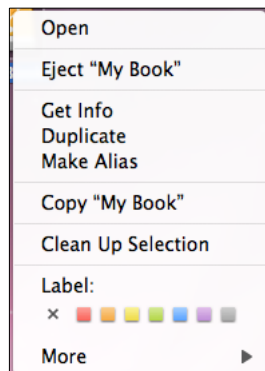
3. Dismount the Virtual CD before you physically disconnect the drive. Select the My Book, and then on the submenu, select **Unmount CD**.

You may hear the drive power down as the Power LED flashes.

4. Wait for the drive icon to be removed from the desktop before disconnecting the drive from the system.

### Using the My Book Icon

1. **Ctrl+click** the My Book icon  on the desktop and select **Eject "New Volume."** ("New Volume" will be the name you assigned to the volume.)



You may hear the drive power down as the Power LED flashes


2. Wait for the drive icon to be removed from the desktop before disconnecting the drive from the system.



## Using the Power Button

1. Press the **Power Button** on the My Book Elite unit.  
You may hear the drive power down as the Power LED flashes
2. Wait for the drive icon to be removed from the desktop before disconnecting the drive from the system.

## Displaying the Status, Serial Number, and Temperature

You can use the WD SmartWare icon  to determine whether the drive is encrypted (locked), how full the drive is, the drive's serial number, and the temperature condition of the drive.

1. Click the WD SmartWare icon  to display a list of drives:



2. Select the My Book. The submenu displays the serial number of the drive, the space available (if the drive is unlocked), and the temperature condition.

## Unlocking the Drive Manually

There are some situations that require you to unlock the drive manually.

### The WD SmartWare Software is Not Available

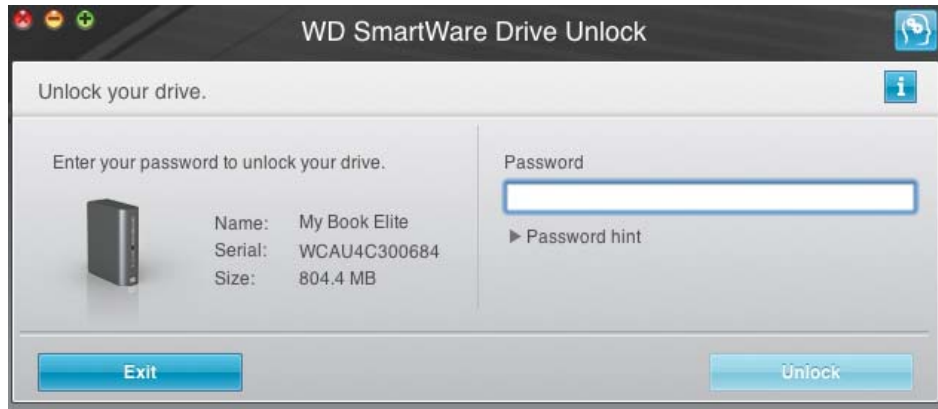
You may need to unlock the drive manually in cases such as the following:

- You uninstall the software and leave the drive locked.
- You move your drive to another system, and need to unlock it without installing the software.

To unlock the drive using the virtual CD:

1. Double-click the WD SmartWare virtual CD on the desktop.
2. Double-click the **DriveUnlock** icon. The WD SmartWare Drive Unlock screen displays.

3. Enter your password and click the **Unlock** button.




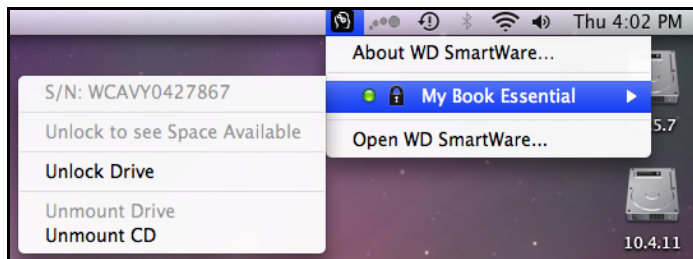
4. At the **Your drive is now unlocked prompt**, click **Exit** to close the WD SmartWare Drive Unlock screen.

## Your Computer Exits Sleep Mode

If your computer goes into sleep mode, an unlock screen may not display when you reactivate the computer. To unlock the drive, you can use the VCD as described above or the following method.

To unlock using the WD SmartWare icon:

1. Click the WD SmartWare icon .
2. Select the drive and then select **Unlock Drive**.



The WD SmartWare Drive Unlock screen displays.

3. Enter your password and click the **Unlock** button:



4. At the **Your drive is now unlocked prompt**, click **Exit** to close the WD SmartWare Drive Unlock screen.

## Uninstalling WD SmartWare Software

**Important:** You can easily uninstall the software. However, you will need to restart the Run Backup backup job manually after reinstalling the software as uninstalling deletes all existing backup job configurations. (See “Backing Up Your Computer Files” on page 17.)

1. Double-click the WD SmartWare virtual CD on the desktop or **WD SmartWare** in the Applications list.
2. Click the **extras** folder and double-click the WD Uninstaller icon. The WD SmartWare Uninstall window displays:



3. Click **Uninstall**.

## Troubleshooting

This chapter includes the following topics:

[Installing, Partitioning, and Formatting the Drive](#)  
[Frequently Asked Questions](#)

If you have problems when installing or using this product, refer to this troubleshooting section or visit our support website at [support.wdc.com](http://support.wdc.com) and search our knowledge base for more help.

### Installing, Partitioning, and Formatting the Drive

How to	Answer ID
• Install, partition, and format the drive in Windows XP and Vista	207, 3322
• Install, partition, and format the drive to Mac OS X 10.4.11 and 10.5+	287, 3323
• Reformat from Mac GPT to Windows XP NTFS	3645
• Reformat the drive from Mac GPT to Windows Vista NTFS format	3647
• Obtain and reinstall the original software included with this product	1425
• Format the drive to the FAT32 file system*	1364
• Use the drive on a Mac and a PC simultaneously	291

\*The FAT32 file system has a maximum individual file size of 4 GB and cannot create partitions larger than 32 GB in Windows; however, Windows users can overcome these file size limitations by formatting the drive to NTFS using the Disk Management utility. See answer ID 1287 at [support.wdc.com](http://support.wdc.com) and article IDs 314463 and 184006 at [support.microsoft.com](http://support.microsoft.com) for further details. To create partitions larger than 32 GB in FAT32 when reformatting the drive, download the External USB/FireWire FAT32 Formatting Utility from [support.wdc.com/download](http://support.wdc.com/download).

### Frequently Asked Questions

**Q:** How do I determine whether or not my system supports USB 2.0?

**A:** Refer to your USB card documentation or contact your USB card manufacturer.

*Note:* If your USB 2.0 controller is built into the system motherboard, be sure to install the appropriate chipset support for your motherboard. Refer to your motherboard or system manual for more information.

**Q:** What happens when a USB 2.0 device is plugged into a USB 1.1 port or hub?

**A:** USB 2.0 is backward compatible with USB 1.1. When connected to a USB 1.1 port or hub, a USB 2.0 device operates at the USB 1.1 full speed of up to 12 Mbps.

**Q:** Why is the data transfer rate slow?

**A:** Your system may be operating at USB 1.1 speeds due to an incorrect driver installation of the USB 2.0 adapter card or a system that does not support USB 2.0.

If your system includes a PCI slot, you can achieve Hi-Speed USB transfer rates by installing a USB 2.0 PCI adapter card. Contact the card manufacturer for installation procedures and more information.

*Note:* If an additional external drive is connected to the WD product, USB bandwidth is shared and may affect performance.

**Q:** Why does the drive not power up?

**A:** Be sure the drive is plugged in to a power source. A special cable may be needed for computers with limited bus power. For more information in the U.S., visit our Web site at [store.westerndigital.com](http://store.westerndigital.com). Outside the U.S., contact WD Technical Support in your region.

**Q:** Why is the drive not recognized under My Computer or on the computer desktop?

**A:** If your system has a USB 2.0 PCI adapter card, be sure that its drivers are installed before connecting your WD USB 2.0 external storage product. The drive is not recognized correctly unless USB 2.0 root hub and host controller drivers are installed. Contact the adapter card manufacturer for installation procedures.

**Q:** *Why won't my computer boot when I connect my USB drive to the computer before booting?*

**A:** Depending on your system configuration, your computer may attempt to boot from your WD portable USB drive. Refer to your system's motherboard BIOS setting documentation to disable this feature or visit [support.wdc.com](http://support.wdc.com) and see Knowledge Base answer ID 1201. For more information about booting from external drives, refer to your system documentation or contact your system manufacturer.

## A

## Installing an SES Driver

Should you decide not to install the WD SmartWare software, you must install an SES driver on computers running Windows to keep the hardware popup wizard from displaying every time you connect your My Book drive to your computer.

Note: If you install the WD SmartWare software, the SES Driver is automatically installed as well.

The following topics are included in this appendix:

[Windows XP](#)  
[Windows Vista](#)  
[Windows 7](#)

### Windows XP

After you physically connect the drive as shown in Figure 3 on page 7, the Found New Hardware screen displays.

### Installing the Driver Automatically

To install the SES driver automatically, you must be connected to the Internet.

Note: If Autoplay is enabled, two extra screens may display at the same time as the Found New Hardware screen. Close those two screens.

1. On the Found New Hardware screen, select **Yes this time only** to allow Windows to connect to Windows Update. Click **Next**.



2. Select **Install the software automatically** and click **Next**.



3. When installation is complete, click **Finish**.



## Installing the Driver Manually

If you are not connected to the Internet, you can install the driver manually.

1. On the Found New Hardware Wizard, select **No, not this time** and click **Next**.



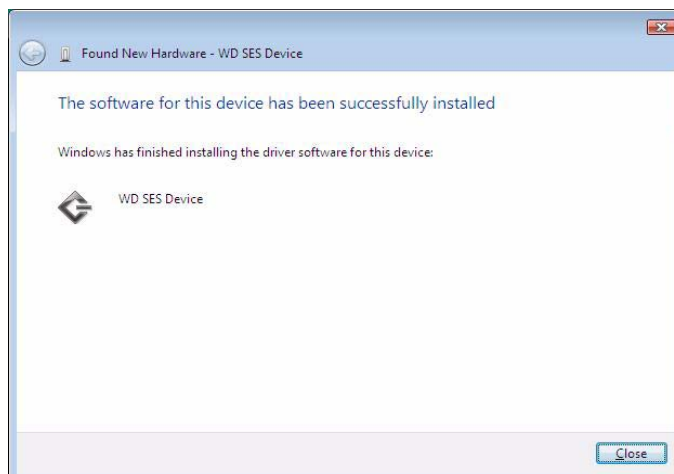
2. On the next screen, select **Install from a list or specific location** and click **Next**.



3. Browse to **My Computer**:
  - a. Double-click the WD SmartWare VCD drive.
  - b. Double-click the **extras** folder.
  - c. Select **WD SES Device Driver**.
  - d. Click **Next**.



4. When installation is complete, click **Finish**.





## Windows Vista

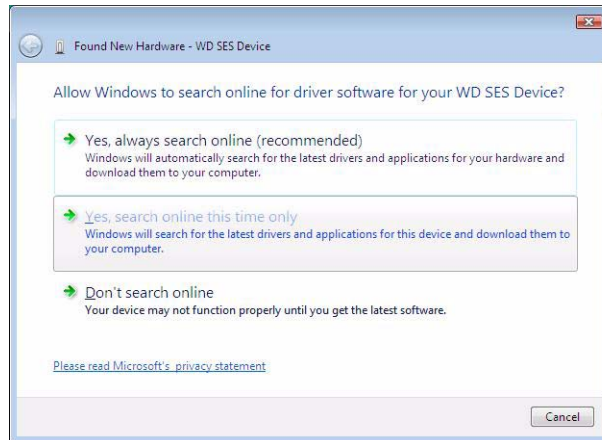
After you physically connect the drive as shown in Figure 3 on page 7, two or three screens may pop up, depending on your computer setup.

### Installing the Driver Automatically

To install the SES driver automatically, you must be connected to the Internet.

Note: If Autoplay is enabled, two extra screens may display at the same time as the Found New Hardware screen. Close those two screens.

1. On the Found New Hardware screen, click **Yes, search online this time only**.



The driver is automatically installed.

### Installing the Driver Manually

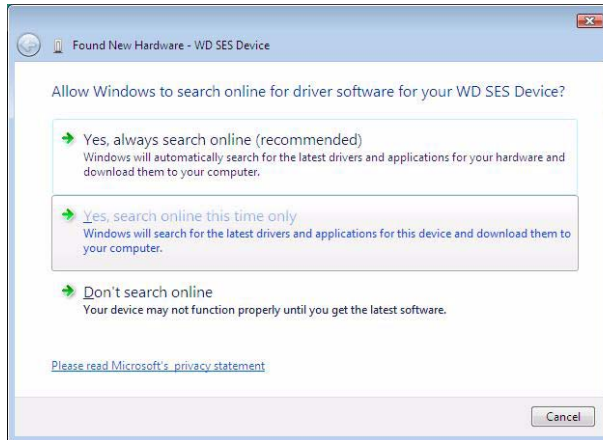
You might want to install the SES driver manually, for example, if you are not connected to the Internet.

Note: If Autoplay is enabled, two extra screens may display at the same time as the Found New Hardware screen. Close those two screens.

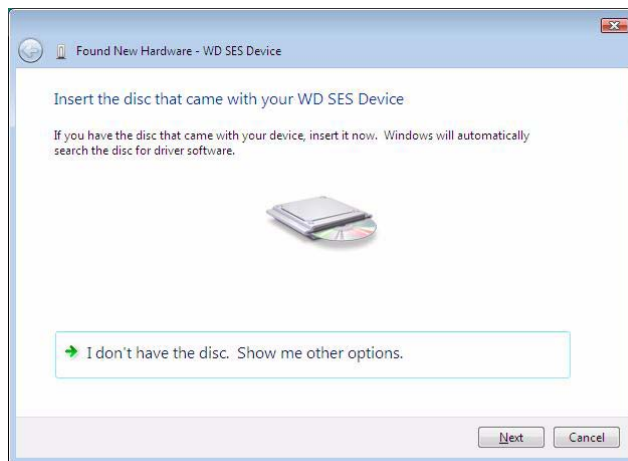
1. On the New Found Hardware - WD SES Device wizard screen, click **Locate and install driver software**.



2. On the next New Found Hardware - WD SES Device wizard screen, click **Don't search online**.

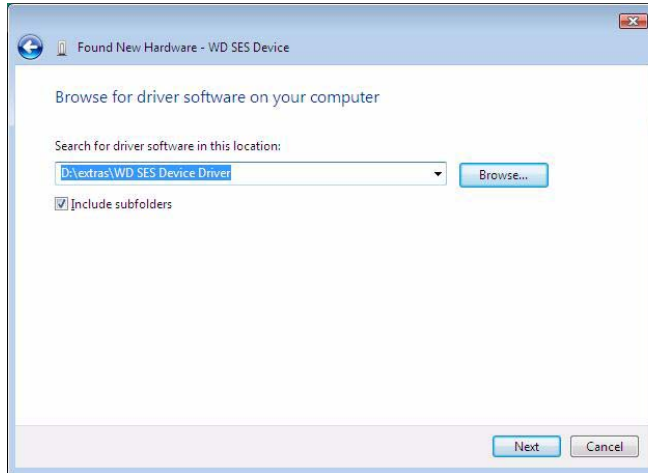


3. On the Install the disc that came with your WD SES Device screen, click **I don't have the disc. Show me other options**.

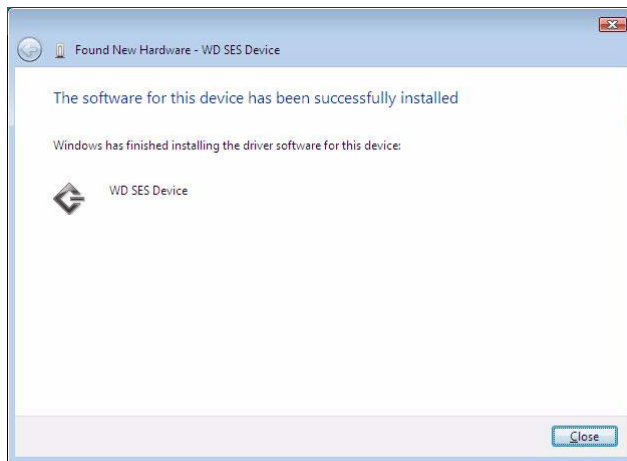


4. Browse to **Computer**:
  - a. Double-click the WD SmartWare VCD drive
  - b. Double-click the **extras** folder
  - c. Select **WD SES Device Driver**.

d. Click **Next**.



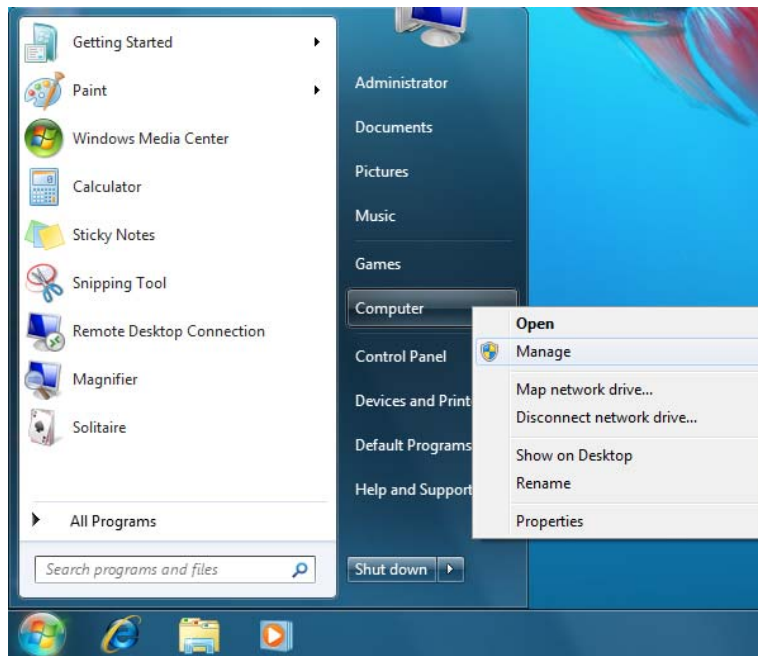
5. When the installation is complete, click **Close**.



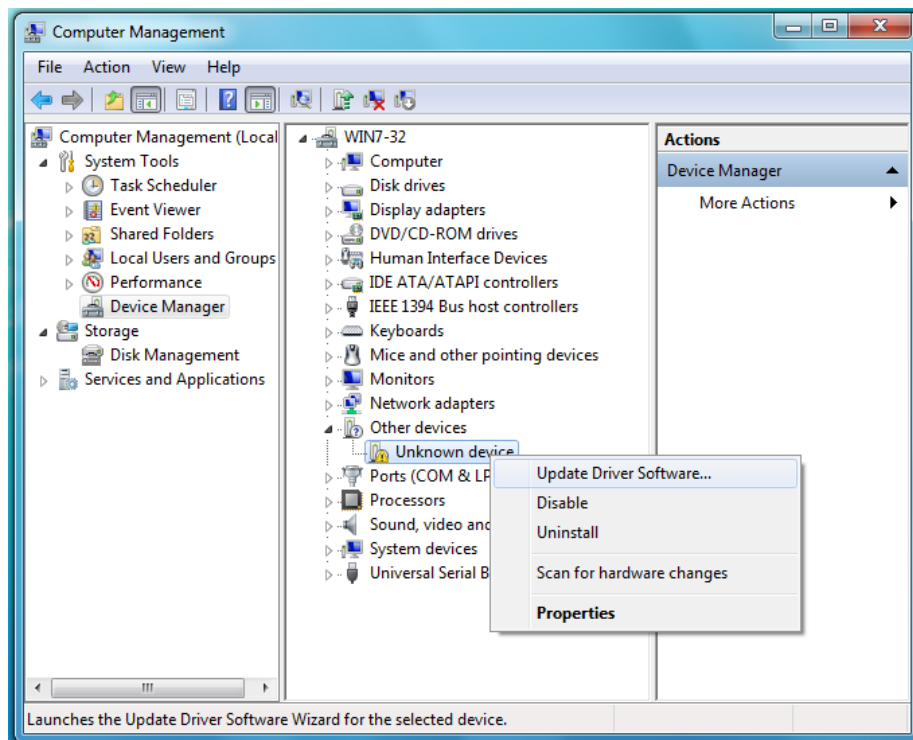
## Windows 7

After you physically connect the drive as shown in Figure 3 on page 7, you can install the SES driver.

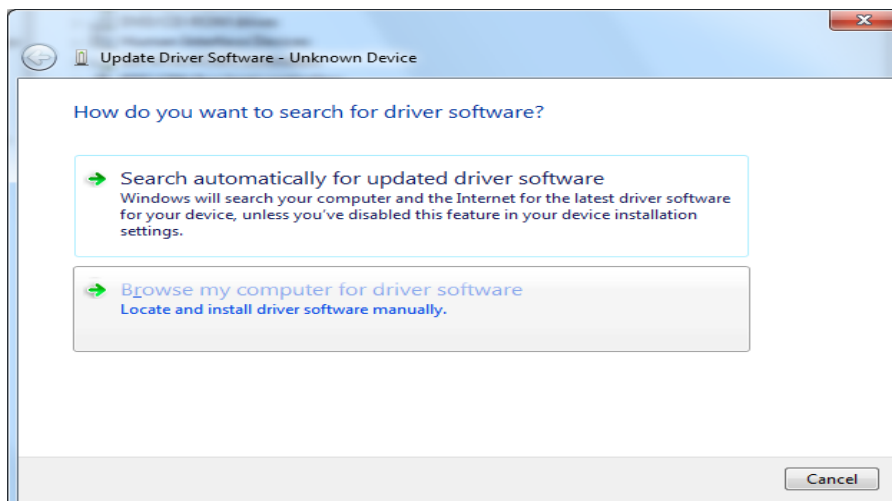
1. Open **All Programs** and click **Computer > Manage**.



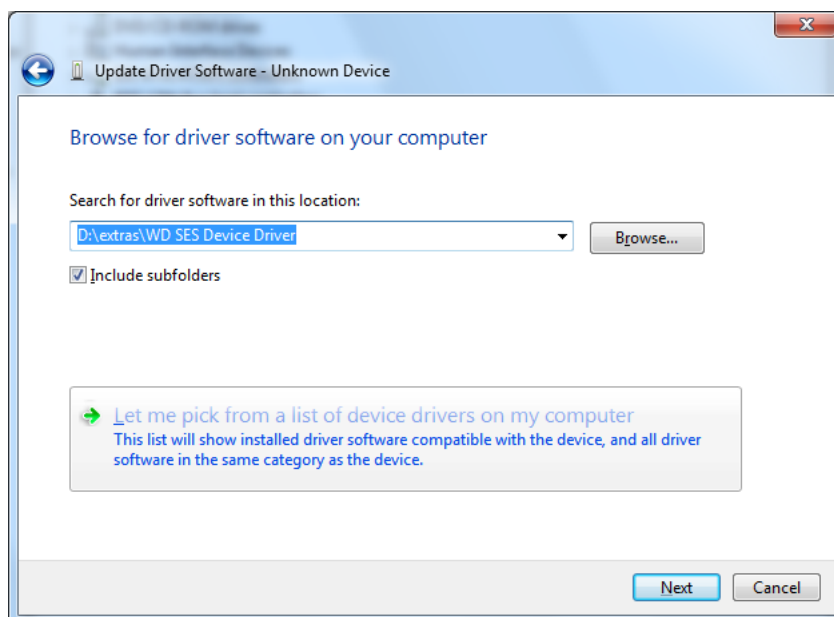
2. Under **Computer Management (Local)**, click **Device Manager > Unknown Device** and right-click **Update driver software**.



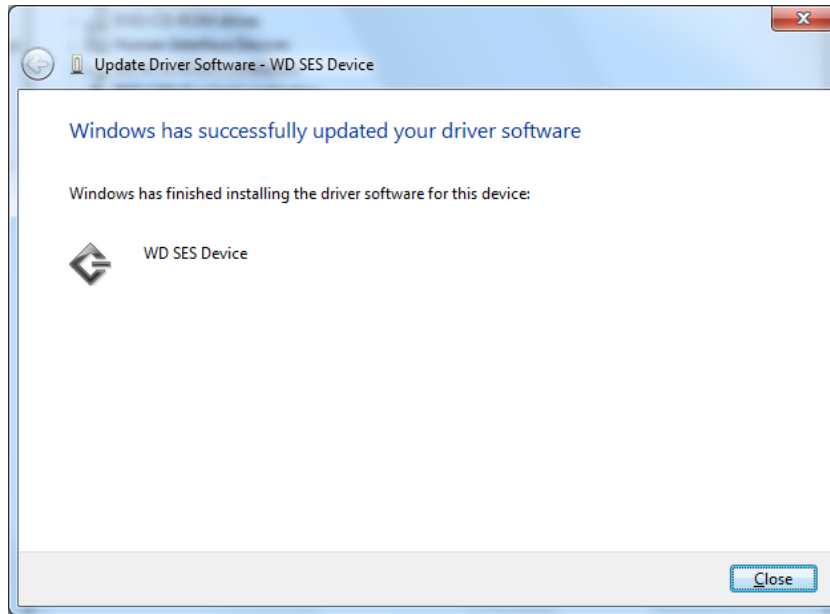
3. Click **Browse my computer for driver software**.



4. Browse to **Computer**, double-click the WD SmartWare VCD drive, double-click the extras folder, and select **WD SES Device Driver**. Click **Next**.



5. When installation is complete, click **Close**.



**B**

## Compliance and Warranty Information

This appendix includes the following topics:

- [Regulatory Compliance](#)
- [Environmental Compliance \(China\)](#)
- [Warranty Information](#)

### Regulatory Compliance

#### FCC Class B Information

This device has been tested and found to comply with the limits of a Class B digital device, pursuant to Part 15 of the FCC Rules. These limits are designed to provide reasonable protection against harmful interference in a residential installation. This unit generates, uses, and can radiate radio frequency energy and, if not installed and used in accordance with the instructions, may cause harmful interference to radio or television reception. However, there is no guarantee that interference will not occur in a particular installation. Any changes or modifications not expressly approved by WD could void the user's authority to operate this equipment.

#### ICES/NMB-003 Compliance

Cet appareil de la classe B est conforme à la norme NMB-003 du Canada.

This device complies with Canadian ICES-003 Class B.

#### Safety Compliance

Approved for US and Canada. CAN/CSA-C22.2 No. 60950-1, UL 60950-1: Safety of Information Technology Equipment.

Approuvé pour les Etats-Unis et le Canada. CAN/CSA-C22.2 No. 60950-1 : Sûreté d'équipement de technologie de l'information.

This product is intended to be supplied by a listed limited power source, double insulated, or direct plug-in power unit marked "Class 2."

#### CE Compliance For Europe

Marking by the CE symbol indicates compliance of this system to the applicable Council Directives of the European Union, including the EMC Directive (2004/108/EC) and the Low Voltage Directive (2006/95/EC). A "Declaration of Conformity" in accordance with the applicable directives has been made and is on file at WD Europe.

#### GS Mark (Germany only)

Machine noise - regulation 3. GPSGV: Unless declared otherwise, the highest level of sound pressure from this product is 70db(A) or less, per EN ISO 7779.

Maschinenlärminformations-Verordnung 3. GPSGV: Der höchste Schalldruckpegel beträgt 70 db(A) oder weniger gemäß EN ISO 7779, falls nicht anders gekennzeichnet oder spezifiziert.

## KCC Notice (Republic of Korea only)

기종별	사용자 안내문
B급 기기 (가정용 정보통신기기)	이 기기는 가정용으로 전자파 적합증을 한 기기로서 주거지역에서는 물론 모든 지역에서 사용할 수 있습니다.

Class B Device 1 Please note that this device has been approved for non-business purposes and may be used in any environment, including residential areas.

## Environmental Compliance (China)

部件名称	铅 (Pb)	汞 (Hg)	镉 (Cd)	六价铬 (Cr (VI))	多溴联苯 (PBB)	多溴二苯醚 (PBDE)
电路板组合 / 板卡	○	○	○	○	○	○
机箱上壳	○	○	○	○	○	○
机箱下壳	○	○	○	○	○	○
光导管	○	○	○	○	○	○
螺丝	○	○	○	○	○	○
橡皮脚垫 (4片)	○	○	○	○	○	○
电源	X	○	○	○	○	○
USB A 接迷你 B 缆线	○	○	○	○	○	○

○: 代表此种部件所用的均质材料中所含的该种有毒有害物质均低于 SJ/T 11363-2006 规定的限量。  
X: 代表此种部件所用的均质材料中所含的该种有毒有害物质均高于 SJ/T 11363-2006 规定的限量。|

## Warranty Information

### Obtaining Service

WD values your business and always attempts to provide you the very best of service. If this Product requires maintenance, either contact the dealer from whom you originally purchased the Product or visit our product support website at [support.wdc.com](http://support.wdc.com) for information on how to obtain service or a Return Material Authorization (RMA). If it is determined that the Product may be defective, you will be given an RMA number and instructions for Product return. An unauthorized return (i.e., one for which an RMA number has not been issued) will be returned to you at your expense. Authorized returns must be shipped in an approved shipping container, prepaid and insured, to the address provided on your return paperwork. Your original box and packaging materials should be kept for storing or shipping your WD product. To conclusively establish the period of warranty, check the warranty expiration (serial number required) via [support.wdc.com](http://support.wdc.com). WD shall have no liability for lost data regardless of the cause, recovery of lost data, or data contained in any Product placed in its possession.

### Limited Warranty

WD warrants that the Product, in the course of its normal use, will for the term defined below, be free from defects in material and workmanship and will conform to WD's specification therefor. The term of your limited warranty depends on the country in which your Product was purchased. The term of your limited warranty is for 3 years in the North, South and Central America region, 3 years in the Europe, the Middle East and Africa region, and 3 years in the Asia Pacific region, unless otherwise required by law. The term of your limited warranty period shall commence on the purchase date appearing on your purchase receipt. WD shall have no liability for any Product returned if WD determines that the Product was stolen from WD or that the asserted defect a) is not present, b) cannot reasonably be rectified because of damage occurring before WD



receives the Product, or c) is attributable to misuse, improper installation, alteration (including removing or obliterating labels and opening or removing external enclosures, unless the product is on the list of limited user-serviceable products and the specific alteration is within the scope of the applicable instructions, as found at [support.wdc.com](http://support.wdc.com)), accident or mishandling while in the possession of someone other than WD. Subject to the limitations specified above, your sole and exclusive warranty shall be, during the period of warranty specified above and at WD's option, the repair or replacement of the Product.

The foregoing limited warranty is WD's sole warranty and is applicable only to products sold as new. The remedies provided herein are in lieu of a) any and all other remedies and warranties, whether expressed, implied or statutory, including but not limited to, any implied warranty of merchantability or fitness for a particular purpose, and b) any and all obligations and liabilities of WD for damages including, but not limited to accidental, consequential, or special damages, or any financial loss, lost profits or expenses, or lost data arising out of or in connection with the purchase, use, or performance of the Product, even if WD has been advised of the possibility of such damages. In the United States, some states do not allow exclusion or limitations of incidental or consequential damages, so the limitations above may not apply to you. This warranty gives you specific legal rights, and you may also have other rights which vary from state to state.

## Index

### A

AC power adapters 7  
Accessories, optional 2  
Alerts, flashing icon 35

### B

Backup  
    about backing up files 17  
    files content box 21  
    procedure 19, 20  
Box contents 2

### C

Capacity gauge 4  
CAUTION  
    about erasing the drive 41  
    about lost passwords 29  
    about preventing data loss when dis-  
        connecting 36, 51  
    about your unlocked drive 31  
China RoHS 67  
Compatibility with operating systems 3  
Compliance, regulatory 66  
Connecting the drive 7  
Converting drive format 45, 55  
Creating a password 29

### D

Disconnecting the drive 36  
Documents file category 15  
Drive  
    connecting 7  
    diagnostics and status checks 43  
    disconnecting from a PC 36  
    eraser, setting 39  
    handling precautions 6  
    label 39  
    sleep timer 41  
Drive Settings  
    drive eraser 39, 41  
    file history 37  
    label 39  
    registration 38, 40  
    security 29, 38  
    sleep timer 41

### E

Environmental compliance, China 67  
Erase Drive screen 41  
Erasing the drive 41

CAUTION about erasing the drive 41

### F

FAQs 55  
FCC Class B information 66  
File  
    categories, defined 15, 18  
    history, drive setting 37  
    history, screen 23  
Flashing icon alerts 35  
Formatting the drive 55  
Front and back views 3  
Full Media Scan 43

### H

Handling precautions 6  
Hardware 2

### I

ICES/NMB-003 compliance 66

### K

Kensington security slot 5  
Kit contents 2

### L

Label, specifying 39  
LED indicators 4  
Limited warranty 67  
Lock indicator 4

### M

Mac  
    dismounting the VCD from 50  
    drive serial number 52  
    drive temperature 52  
    opening WD SmartWare software on  
        48  
    reformatting the drive to 45  
    safely dismounting the drive from 51  
    space available 52  
    status check 52  
    uninstalling WD SmartWare software  
        54  
    unlocking the drive manually 52  
    WD Smartware icon functions 48  
Mail file category, defined 15, 18  
Movies file category, defined 15, 18  
Music file category, defined 15, 18

### N

NTFS format 3

## O

Opening WD SmartWare software 34  
 Operating system requirements 3  
 Other file category, defined 15, 18  
 Overheating 35

## P

Password protecting your drive 29  
     CAUTION about lost passwords 29  
 Physical description 3  
 Pictures file category, defined 15, 18  
 Power adapters 7  
 Power button 5, 36, 52  
 Precautions for handling the drive 6  
 Preferences options, setting 37  
 Preferences software setting 37  
 Product features 1  
 Product registration 5

## Q

Quick Diagnostic Self-test 43

## R

Reformatting the drive 45  
 Registering your drive 40  
 Registration drive setting 38  
 Regulatory compliance 66  
 Requirements, operating systems 3  
 Restarting the software 34  
 Retrieve  
     about retrieving files 25  
     folder, software setting 37  
     folder, specifying 37  
     procedure 25, 28  
 RoHS 67  
 Run Diagnostics screen 43

## S

Safety compliance 66  
 Security drive settings 38  
 Service 67  
 SES driver installation 60, 63  
     Windows XP 57  
 Set  
     preferences screen 38  
     retrieve folder screen 37  
     sleep timer screen 41  
 Setting the drive sleep timer 41  
 SMART Status Check 43  
 Software Settings  
     preferences 37  
     retrieve folder 37

    system throttling 37  
 Space available 35  
 Settings  
     See Drive Settings  
 Status check 35  
 System  
     file category defined 50  
     file category, defined 15, 19  
     throttling software setting 37  
 System compatibility 3

## T

Temperature check 35

## U

UL 66  
 Underwriters Laboratories Inc. 66  
 Uninstalling 54  
 Uninstalling WD SmartWare software 42  
 Unlocking the drive from the virtual CD 32  
 USB drive interface 5

## W

Warranty 67  
 WD service 67  
 WD SmartWare icon 34  
 Windows 7  
     SES driver 63  
 Windows Vista  
     SES driver 60  
 Windows Vista/Windows 7  
     installing drive on 10  
 Windows XP  
     installing drive on 8  
     SES driver 57

---

Information furnished by WD is believed to be accurate and reliable; however, no responsibility is assumed by WD for its use nor for any infringement of patents or other rights of third parties which may result from its use. No license is granted by implication or otherwise under any patent or patent rights of WD. WD reserves the right to change specifications at any time without notice.

Western Digital, WD, the WD logo, and My Book are registered trademarks; and My Book Elite, WD SmartWare, and Data Lifeguard are trademarks of Western Digital Technologies, Inc. Other marks may be mentioned herein that belong to other companies.

© 2009 Western Digital Technologies, Inc. All rights reserved.

Western Digital  
20511 Lake Forest Drive  
Lake Forest, California 92630 U.S.A.

4779-705031-A00 August 2009