

# wacom® MovinkPad

No Limits.  
Just Draw.

Draw when you want,  
as much as you want,  
wherever you want.  
You don't need experience or skills.  
You don't need a reason or a goal.  
"Wacom MovinkPad 11" removes all  
barriers to your creativity.  
Just exist in the moment and  
let the lines flow as you start  
sketching your world.  
"Wacom MovinkPad 11" is  
there whenever – and wherever –  
inspiration strikes.



Draw your world – anytime, anywhere. Everything you need, all in one place.

## Lightweight & all-in-one. Perfect to take with you every day.

Weighing just 1.3lbs, this 11.45-inch device is so light and thin it can go anywhere a sketchbook can. Everything you need is built-in—no PC required. \* Turn your favorite café or park into your own creative studio.



## Instantly capture the moment. Quick drawing is ready when you are.

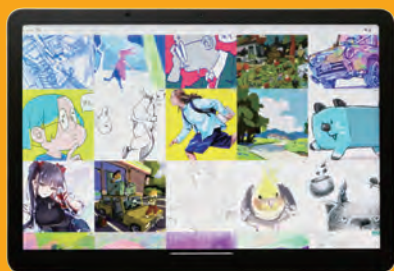
Launch the sketching app "Wacom Canvas" by tapping and holding the pen on the screen during sleep mode. Start drawing as soon as inspiration strikes, just like opening a sketchbook.

\*When using the Quick Drawing function to launch Wacom Canvas, a new canvas will open to protect your work.



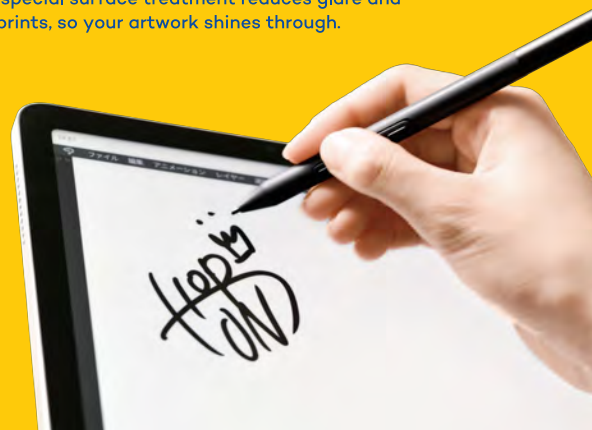
## Everything is right there. That's the power of Wacom Shelf.

Scroll through your growing collection of sketches, artwork and reference images – all in one place. Wacom Shelf lets you view every image on your device, no matter the file type. Even if you've forgotten where you saved it, find everything you need at a glance. Supports bmp, clip, heic, jpeg, webp, png and tiff formats.



## Less glare, more immersion. See your work without distractions.

A display crafted for a perfect drawing experience. The pen glides smoothly, but with just enough "grip." And a special surface treatment reduces glare and fingerprints, so your artwork shines through.



Model	Wacom MovinkPad 11
Model Number	DTHA116C
Display size / Resolution	11.45" (29cm) / 2200 x 1440
Active area	243 x 159 mm / 9.6 x 6.3 in
Size	266 x 182 x 7 mm / 10.5 x 7.2 x 0.3 in
Weight	588 g / 1.3 lb
Color performance	Display Colors: 16.7 million, Color gamut coverage ratio: sRGB 99% (CIE 1931) (typ)
Viewing Angle	170deg. (85/85) H / 170deg. (85/85) V (typ)
Contrast Ratio	1200:1 (typ)
Aspect Ratio / Brightness	3:2 / 400cd/m <sup>2</sup> (typ)
Processor	MediaTek Helio G99
Memory	8GB
Storage	128GB
Wireless connectivity	Wi-Fi (IEEE 802.11a/b/g/n/ac) / Bluetooth® 5.2
Operating system	Android™ 14
Connectivity	USB Type-C port (USB2.0) x1
Pen	Battery-free Wacom Pro Pen3 with Nib holder, 3 side switches, 8,192 pressure levels. Not included: Customizable grip size, weight and side switch parts.
Supported pen tilt angle	60 degrees
Multi-Touch	Yes - 10 fingers

Battery	Type: Lithium-ion battery / Capacity: 7700mAh (typ)
Camera	5M pixels (Front) 4.7M pixels (Rear)
Mic / Speaker	Dual Microphones Stereo Speaker
Sensor	G-sensor e-compass Ambient light sensor
What's included	Wacom MovinkPad 11, Wacom Pro Pen 3 with nib holder (Felt nib x3), USB-C to USB-C Cable (1m/Power), IPI Booklet, Regulation sheet
Software	CELSYS CLIP STUDIO PAINT DEBUT (2 years License), Wacom Canvas, Wacom Shelf, Wacom Tips
Requirement	Wacom ID registration and download of software requires an Internet connection. *
Optional Accessories	Wacom MovinkPad 11 Case with Stand, USB-C to C Cable 1.0M for Wacom Movink, USB-C to C Cable 1.0M for Wacom One S & M, Wacom Foldable Stand, Wacom Pro Pen 3, Wacom Pro Pen 3E, Wacom One 12/13T Power Adapter, Wacom Pro Pen 3 Straight Grip, Wacom Pro Pen 3 Flare Grip, Wacom Pro Pen 3 Standard Nibs, Wacom Pro Pen 3 Felt Nibs
Limited warranty	1 year in Japan & Asia Pacific (excluding Australia and Hong Kong), 2 years in USA, Canada, Latin America, Australia, Hong Kong, Europe, Africa and Middle East

\*Wacom ID and product registration required. Agreement to Terms of Use and respective license agreement from bonus software companies required.

Specifications are subject to change. Specification numbers like display size, active area and weight are approximate. Each software's functions and UI are subject to change due to updates.



©2025 Wacom Co., Ltd. All rights reserved. Wacom, the Wacom logo, Wacom MovinkPad, Wacom Canvas and Wacom One are trademarks and/or registered trademarks of Wacom Co., Ltd. Android is a trademark of Google LLC. Wi-Fi is a trademark or registered trademark of Wi-Fi Alliance. The Bluetooth® word mark is a registered trademark owned by Bluetooth SIG, Inc. USB Type-C and USB-C are trademarks or registered trademarks of USB Implementers Forum. CLIP STUDIO PAINT is a trademark or registered trademark of CELSYS.

www.wacom.com