

A-LINK[®]

WNR


**Repeater mode
Manual setup**

Ver. 1.0

A. Set up the Ethernet connection

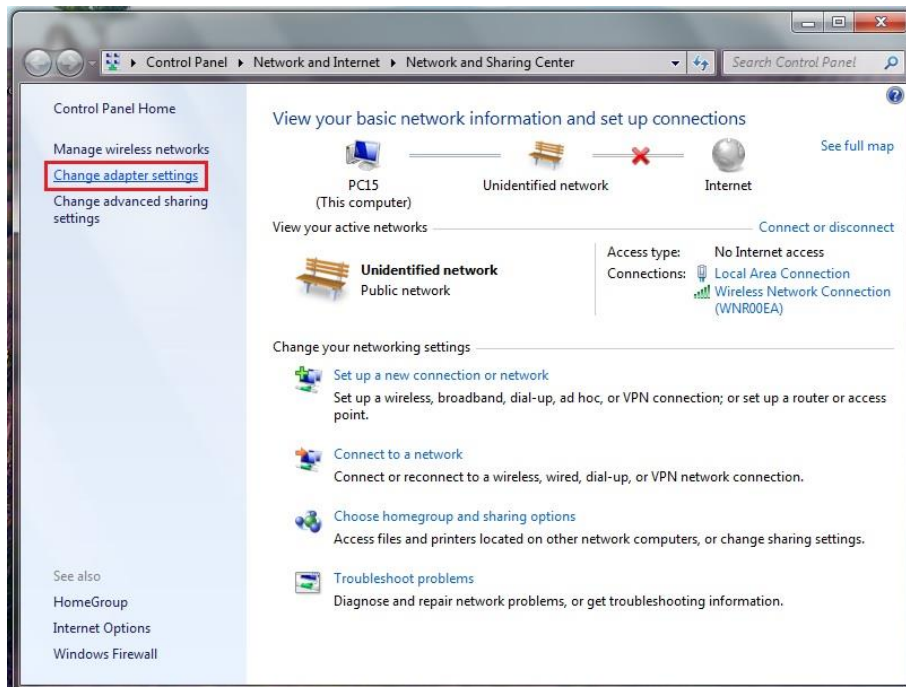
This guide will show connection steps with Windows 7 OS.

1. Connect Ethernet RJ-45 cable from WNR to your PC and plug the WNR to your wall socket.

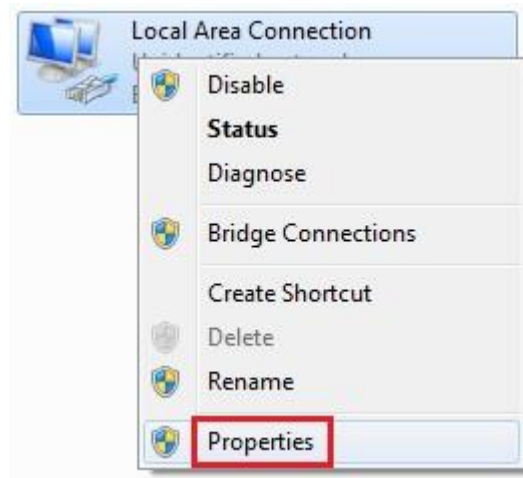
2. After WNR booted up, network icon  on right side of task bar have yellow mark on it. Press the icon and press “Open Network and Sharing Center” link to configure IP addresses for connection.



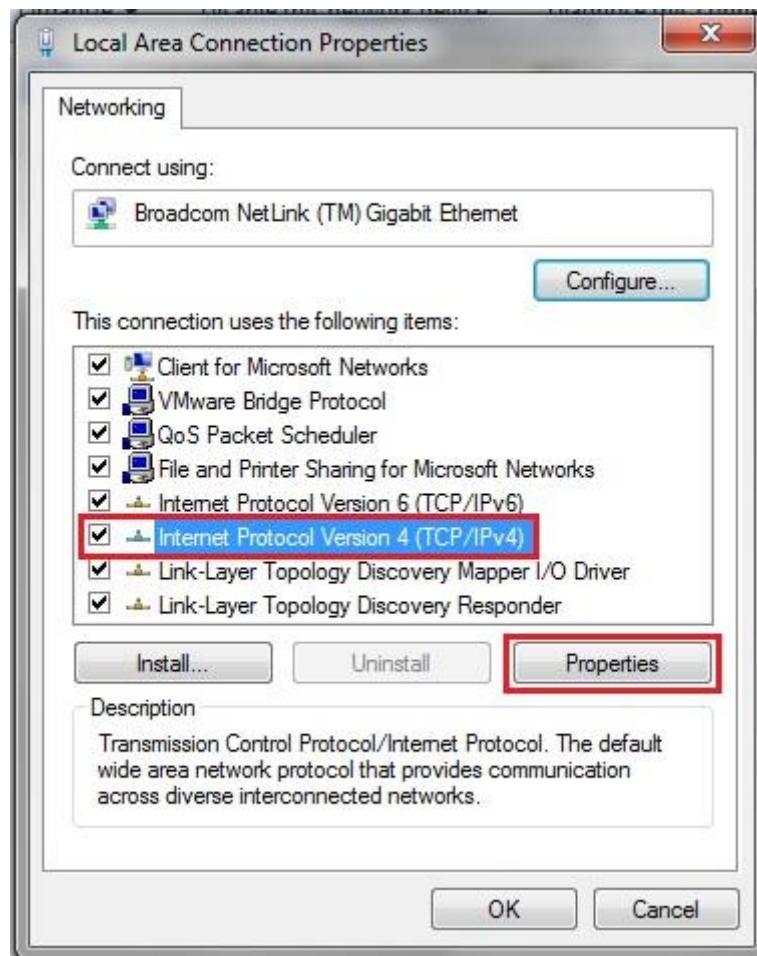
3. On Network and Sharing Center, press “Change adapter settings”.



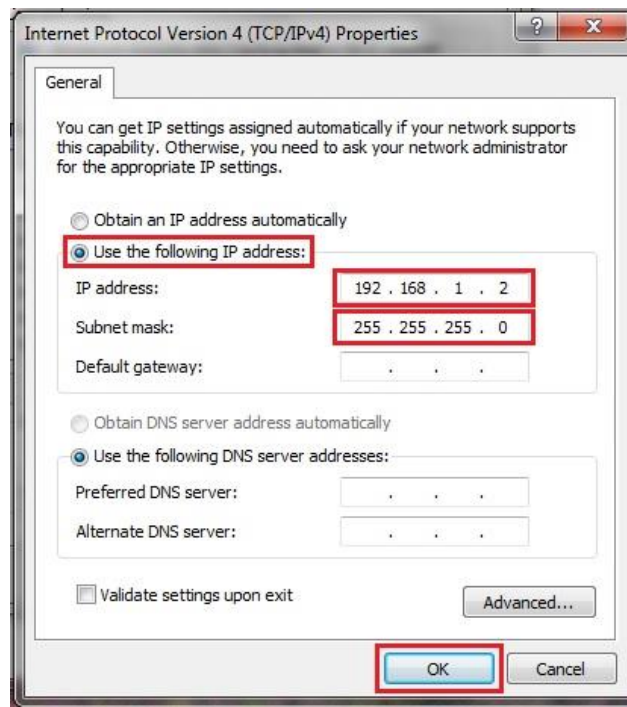
4. Press right side mouse button on “Local area Connection” and choose “Properties” from menu.



5. Choose “Internet Protocol Version 4(TCP/IP)” and press “Properties”.



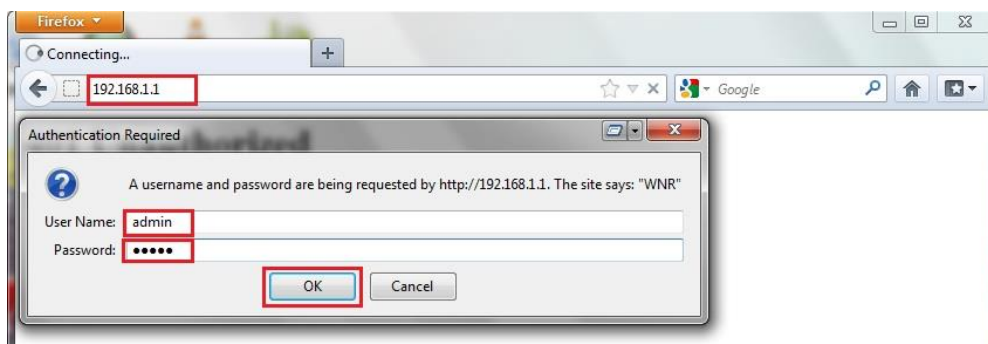
6. Choose “Use the following IP address” and type following IP addresses:
IP address: 192.168.1.2
Subnet mask: 255.255.255.0



7. Open the Internet browser and type address <http://192.168.1.1> and press Enter. Type Username and Password for WNR and press “OK”:

User name: admin

Password: admin



8. Follow next steps to configure WNR. After WNR configured, you need to change IP address settings back to “Obtain an IP address automatically” from Local area connection as shown on steps A2 – A6.

B. Connect to the AP as repeater

1. Click the operating mode “Repeater” and press “Site survey” to list all AP’s.



A-LINK[®]

Advanced:

Access Point Router Repeater

Auto. Setup:

Network Name (SSID):

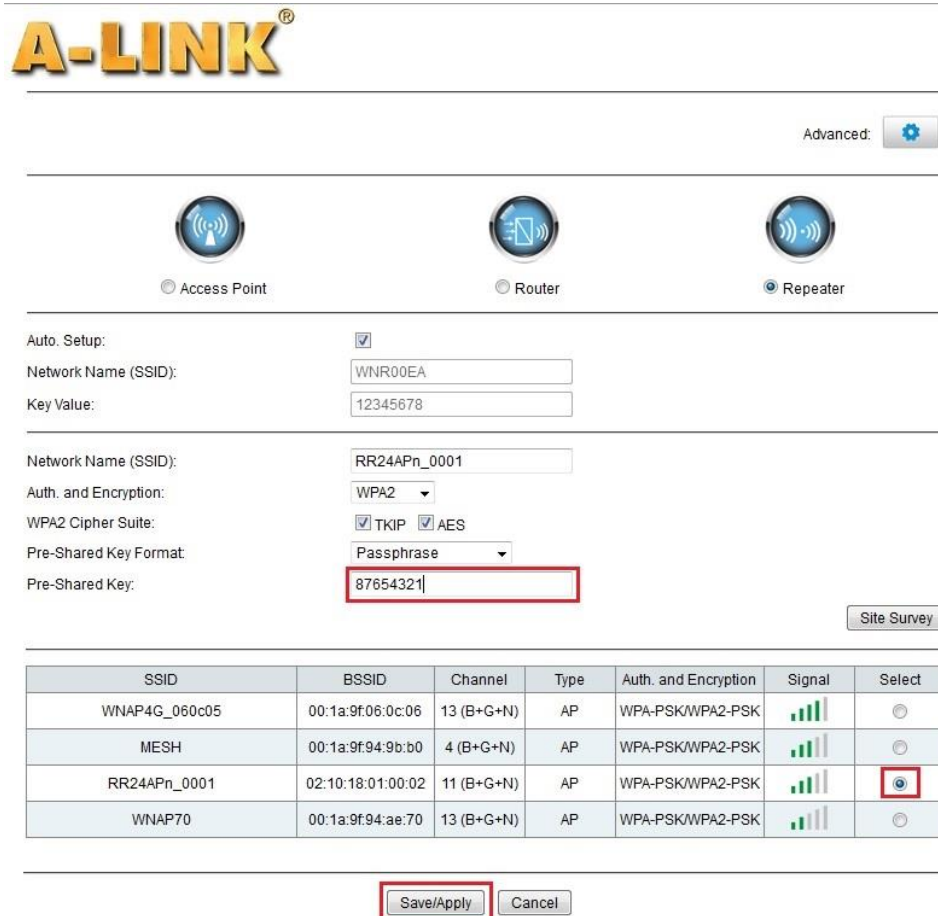
Key Value:

Network Name (SSID):

Auth. and Encryption:

SSID	BSSID	Channel	Type	Auth. and Encryption	Signal	Select
------	-------	---------	------	----------------------	--------	--------

2. Select the AP you want to connect to on list and type AP “Pre-shared key”. Press “Save/Apply”.



A-LINK[®]

Advanced:

Access Point Router Repeater

Auto. Setup:

Network Name (SSID):

Key Value:

Network Name (SSID):

Auth. and Encryption:

WPA2 Cipher Suite: TKIP AES

Pre-Shared Key Format:

Pre-Shared Key:

SSID	BSSID	Channel	Type	Auth. and Encryption	Signal	Select
WNAP4G_060c05	00:1a:9f:06:0c:06	13 (B+G+N)	AP	WPA-PSK/WPA2-PSK		<input type="radio"/>
MESH	00:1a:9f:94:9b:b0	4 (B+G+N)	AP	WPA-PSK/WPA2-PSK		<input type="radio"/>
RR24APn_0001	02:10:18:01:00:02	11 (B+G+N)	AP	WPA-PSK/WPA2-PSK		<input checked="" type="radio"/>
WNAP70	00:1a:9f:94:ae:70	13 (B+G+N)	AP	WPA-PSK/WPA2-PSK		<input type="radio"/>

3. WNR will be rebooted.

Rebooting...

The operation is in progress, please wait for **38** seconds...

WARNING: Please **DO NOT** turn off or reboot the device during this time, otherwise your device may be damaged.

4. Now after settings saved and router rebooted, you need to change back to “Obtain an IP address automatically” from Local area connection as shown on steps A2 – A6.

A-LINK[®]

Advanced:

Access Point

Router

Repeater

Auto. Setup:

Network Name (SSID):

Key Value:

Network Name (SSID):

Auth. and Encryption:

WPA2 Cipher Suite: TKIP AES

Pre-Shared Key Format:

Pre-Shared Key:

SSID	BSSID	Channel	Type	Auth. and Encryption	Signal	Select
------	-------	---------	------	----------------------	--------	--------

C. FAQ

1. how to reset to defaults

Keep pressing the Reset button near to the wan port when the device power ON, release it after 5~10 seconds.

2. Laptop can not search out the wifi signal?

- 1) If your laptop is with built-in wireless adapter, please confirm that the wireless adapter is enabled and working.
- 2) Check the wireless service in the laptop is open or not. Methods is as follow: Right-click “my computer”, choose “management”. Choose “service and application”, check the ”wireless Zero Configuration” in the “Service ”page. If the stage is not open, please right-click “wireless zero configuration” and click “open”. If the open type shows it is forbidden, please right-click and choose the attribute, change the open type to automatic, then change the state to open.
- 3) Confirm the wireless function of AP is enabled.
- 4) Check the driver of the wireless adapter in the device manager is successfully installed.