



Wireless Headset EHS Guide



Designer and Manufacturer of
**Professional Headsets for Contact Centres
& Unified Communications**

Wireless Headset EHS User Guide

Introduction

Electronic Hook Switch(EHS) provides a solution that enables remote operation of answer/end functions for wireless headsets with various phones, thus eliminating the need for a mechanical handset lifter.

Mobility

With an EHS solution you can roam within your premises and still do business on the spot. Wireless headsets with EHS functionality boost productivity as they provide the user with the ability to answer and end a call, while away from their desk.

EHS support the following phone system manufacturers:

Wireless Headset EHS Compatibility Table

Phone Model	EHS Adapter	JPL Part No
AASTRA / MITEL 5360, 5370, 5370IP, 5380, 5380IP 6771, 6773IP, 6775IP, *6735i, *6737i, 6739i, *6753i, *6755i, *6757i, 6757iCT, 6771IP, 6773IP, 6775IP, 6865i, 6867i, 6869i, 7434IP, 7444IP	DS-DHSG Cable *Needs Aastra/Mitel EHS kit	EHS-3
ALCATEL-LUCENT 4028 EE, 4038 EE, 4068 EE IP Touch 4028, 4038, 4068, 8012,8028, 8088, 8068, 8078 IP8028, IP8038, IP8068	MSH Adapter	EHS-7
AVAYA 1408, 1416, 1608, 1616, 1608i, 1616i, 1624, 2410, 4630, 5410, 6224D+M, 6416D+M, 9404, 9406, 9408, 9504, 9508, 9608, 9610, 9611, 9619, 9620, 9620L, 9621, 9630 9640, 9641, 9641G, 9650, 9670, J169, J179, J129	AEI-II(Avaya) Adapter Kit	EHS-4
AVAYA 2420, 4610, 4620, 5420, 5610, 5620, 5621, 4610SW, 4620SW, 4621SW, 4622SW,4625SW, 4630SW	Avaya compatible EHS Cable	EHS-15
AVAYA-NORTEL 1120E, 1140E, 1150E, 1165E	Avaya compatible EHS Cable	EHS-12
CISCO 6911, 6945, 7821, 7841, 7861, 7942G , 7945G, 7962G, 7965G, 7975G, 7821, 7841, 7861, 8811, 8841, 8845, 8851, 8861, 8865	HHC Adapter	EHS-2
CISCO (with USB Port) 8851, 8861, 8865, 8961, 9951, 9971, DX650, DX70, DX80	HHC-2 Adapter	EHS-12
CISCO 8941, 8945, 8946, 8965, 8945G, 8965G	Cisco compatible EHS Cable	EHS-16
DIGIUM D40, D45, D50, D60, D70, D80	Digium compatible EHS Cable	EHS-5
ERICSSON-LG LIP-9010, LIP-9020, LIP-9030, LIP-9040, LIP-9050	LG EHS Adapter Needs Ericsson-LG EHSA Kit	EHS-11
FUNKWERK CS410, CS410-U, IP-S400, CS290-U, IP290 Plus		EHS-3
GRANDSTREAM GXP1610, GXP1620, GXP1630, GXP1760, GXP2124, GXP2130, GXP2140, GXP2160, GXP2200	Grandstream compatible EHS Cable	EHS-13
PANASONIC DT543, DT546 , HDV230, HDV330, HDV430, NT553, NT556, NT560, NT564, UT133, UT136, UT248, UT670	Panasonic compatible EHS Cable	EHS-1
PANASONIC NT543	Panasonic compatible EHS Cable	EHS-14

Wireless Headset EHS Compatibility Table

Phone Model	EHS Adapter	JPL Part No
POLYCOM IP301, IP320, IP321, IP330, IP331, IP335, IP430, IP435, IP450, IP501, IP550, IP560, IP601, IP650, IP670, VVX300, VVX301, VVX310, VVX311, VVX400, VVX401, VVX410, VVX411, VVX500, VVX501, VVX600, VVX601, VVX1500, VVX1501	Polycom compatible EHS Cable	EHS-5
SAMSUNG SMT-i16010, SMT-i6011, SMT-i6021	Samsung compatible EHS Cable	EHS-12
SHORETEL 420, 485, 212K, 565G, 655G, IP100, IP230, IP230G, IP265, IP480, IP480G, IP485G, IP530, IP560, IP560G, IP565G, IP655	Adapter Kit	EHS-8
SIEMENS/UNIFY OpenStage 30/40/60/80, Openscape IP 35G/55G OptiPoint Basic/Std/Adv/Eco 410/420/500/600	DS-DHSG Cable	EHS-3
SNOM *300, *320, *360, *370, *720, D725, *760, *820, *821, *870	DS-Gender *Needs SNOM EHS Adapter	EHS-6
TIPTTEL 85 System, 274, 275	Tiptel compatible EHS Cable	EHS-3
TOSHIBA DP5022-SD, DP5022-SDM, DP5032-SD, DP5118-DP, DP5122-SD, DP5130-FSDL, DP5130-SDL, DP5132-SD, IP5022-SD, IP5122-SD, IP5122-SDC, IP5131-SDL, IP5132-SD IPT2008-SDL, IPT2010-SD, IPT2020-SD	SHR (Toshiba)Adapter Kit	EHS-8
T-SYSTEMS F20, F30, F40, F50, F630, F640, F660, F680	T-Systems compatible EHS Cable	EHS-3
T-SYSTEMS 140IP, 141, 150IP, 151, 160IP	T-Systems compatible EHS Cable	EHS-7
YEALINK *T20X, *T26P, *T27G, *T27P, *T28P, *T29G, *T38G, *T40G, *T40P, *T41S, *T41P, *T42G, *T42S, *T46G, *T46S, * T48G, * T48S	DS-Gender *Needs Yealink EHS Adapter	EHS-6
SMART PHONE Galaxy & iPhone Series	SmartPhone EHS Adapter	EHS-9

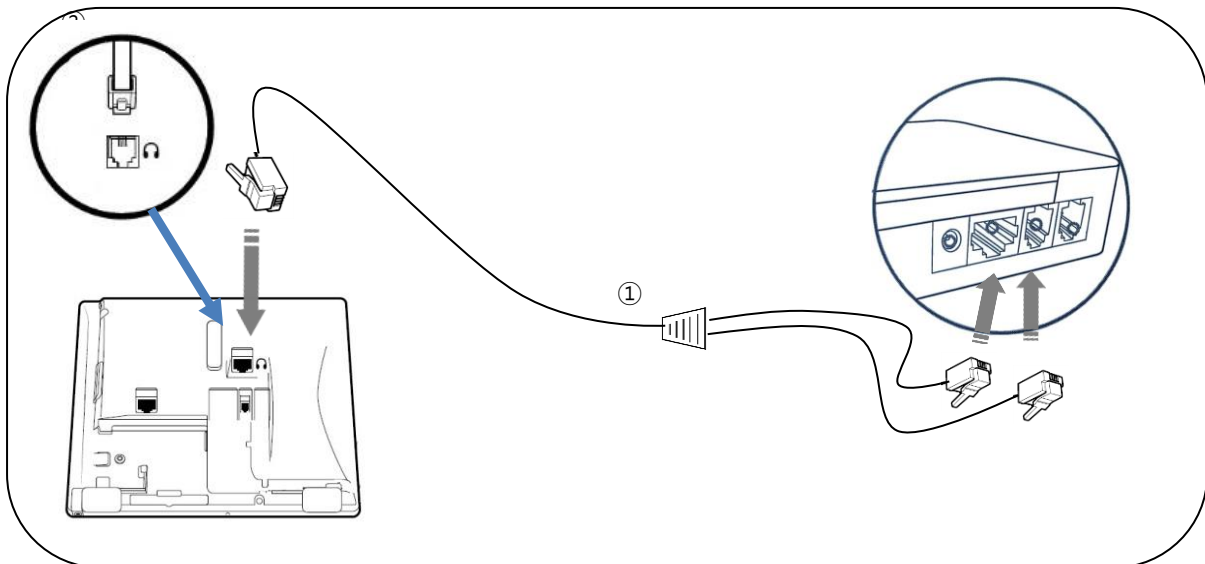
Aastra/Mitel EHS setup guide

Aastra/Mitel	Phones
	6771/6773ip/6775ip 7434ip/7444ip 5370,5370ip 5380/5380ip




EHS-3

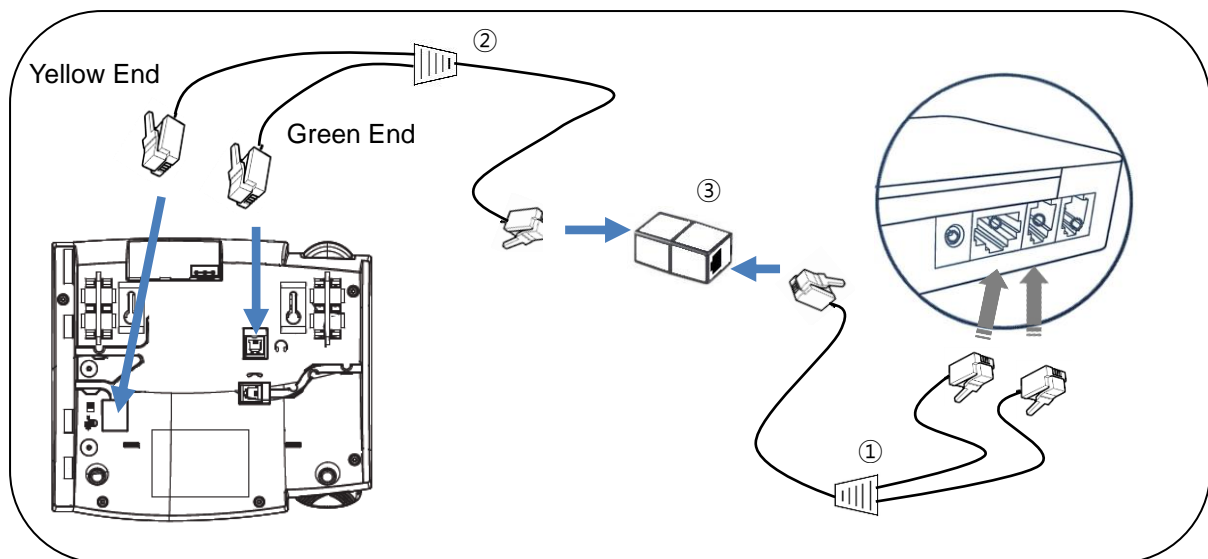
① Connection Diagram



① DS-DHSG cable(EHS-3) : RJ-45(8P8C) to RJ-45(8P8C) and RJ-9(4P4C)



Connection Diagram



Note : Aastra DHSG cable kit is available from your Aastra reseller

- ① DS-DHSG cable(EHS-3) : RJ-45(8P8C) to RJ-45(8P8C) and RJ-9(4P4C)
- ② Aastra DHSG cable
- ③ RJ-45 Coupler

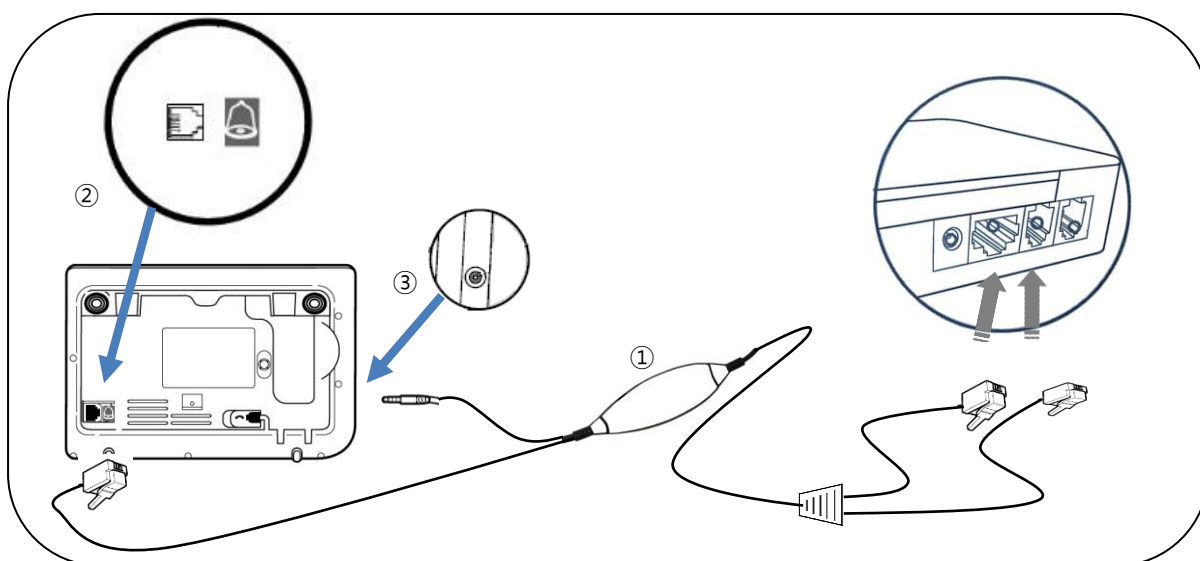
Note :

1. Audio mode needs to be set to "Headset/Speaker" mode manually.
(Options->Preferences->Set Audio->Audio Mode->Headset/Speaker)
2. For full headset functionality, disable the "Goodbye Key Cancels Incoming Call" parameter.
Aastra Web UI: Basic Settings->Preferences->General

Alcatel EHS Setup guide



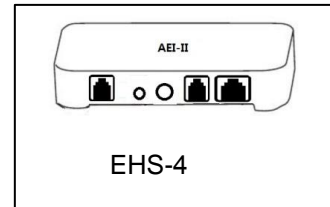
Connection Diagram



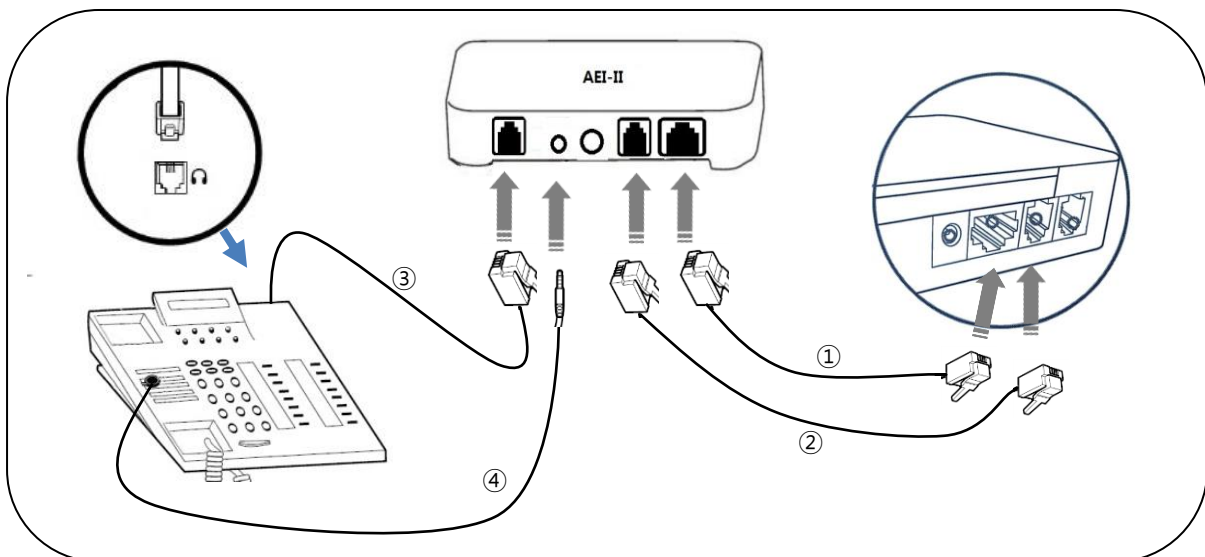
- ① MSH cable(EHS-7) : RJ-12(6P6C) and 3.5Ø plug to RJ-45(8P8C) and RJ-9(4P4C)
- ② EHS Port
- ③ Audio Port

Avaya EHS Setup guide

Avaya	Phones		
	1408	1416	1608
	1616	2410	5410
	6224D+M	6416D+M	
	9404	9408	9504
	9508	9608	9610
	9611	9620	9621
	9630	9640	9641
	9650	9570	



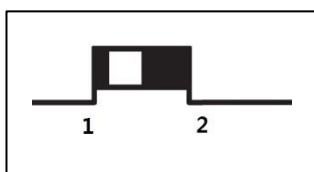
Connection Diagram



- ① : Power cable (RJ-45 to RJ-12)
- ② : Telephone cord (RJ-9 to RJ-9) Cable length : 600mm
- ③ : Telephone cord (RJ-9 to RJ-9) Cable length : 300mm
- ④ : External Microphone for ring detection

Position of Telephone compatibility Switch : Set to '1'

Compatibility switch is located on left side of the base unit.

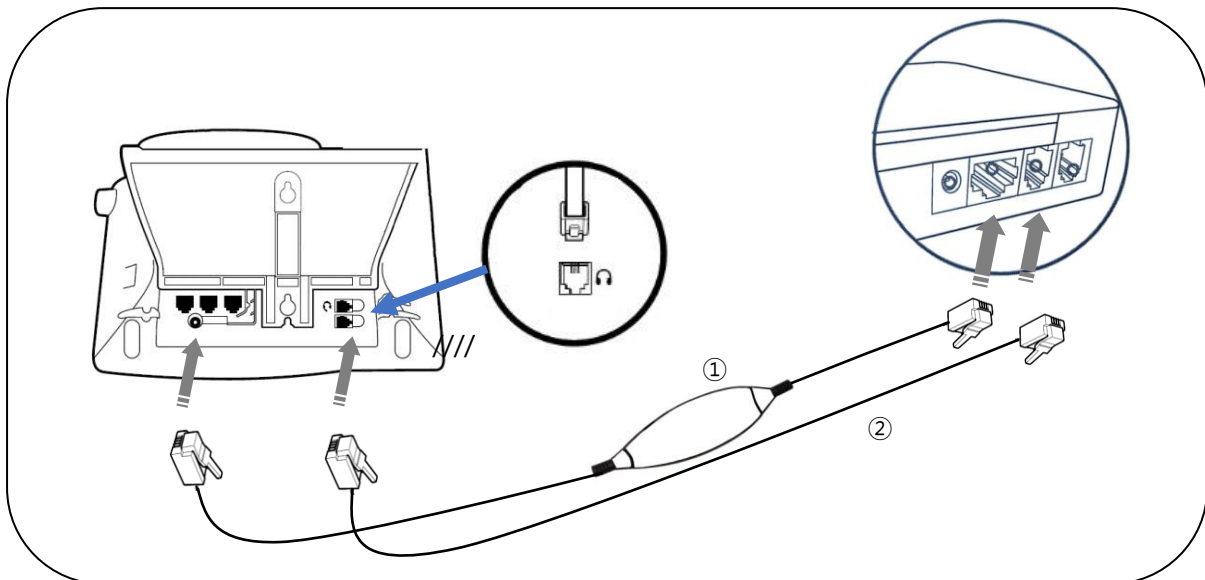


Cisco EHS Setup guide

Cisco	Phones
	6945
	7942G 7945G
	7962G 7965G
	7975G
	7821/7841/7861
	8811/8841/8845
	8851/8861/8865



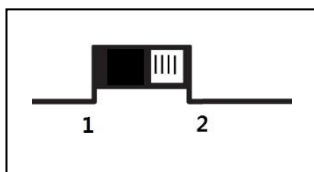
Connection Diagram



- ① : EHS Adapter (EHS- 2) : RJ-45 to RJ-12
- ② : Telephone cord (RJ-9 to RJ-9) Cable length : 600mm

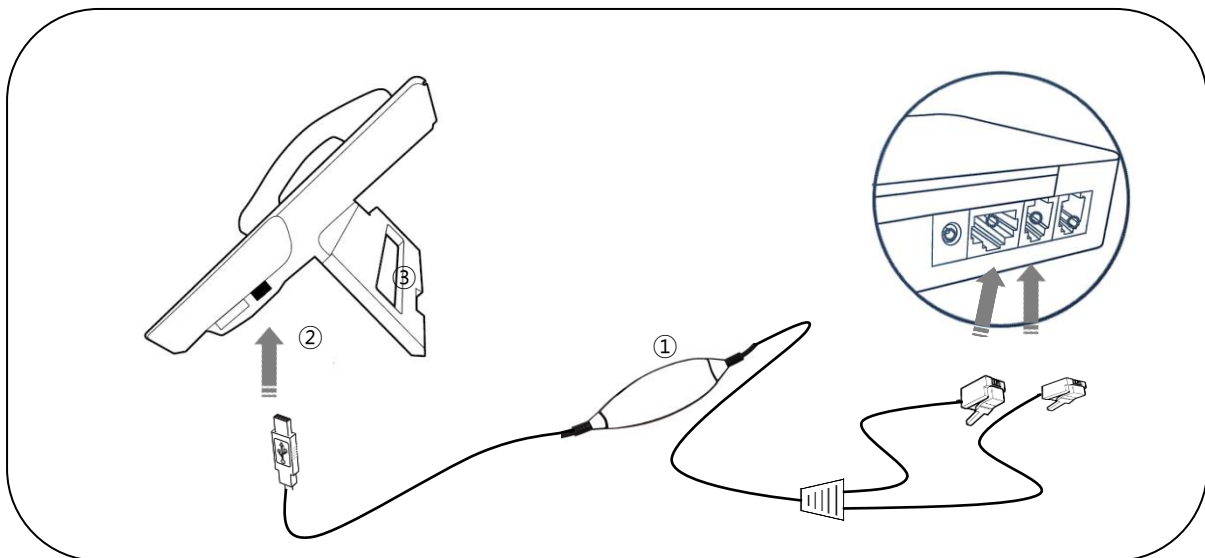
Note : Make sure that Electronic Hook switch should be enabled in Cisco Unified Communications Manager Administration.

Position of Telephone compatibility Switch : Set to '2'



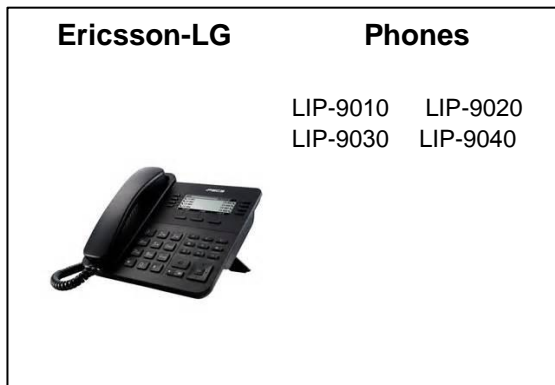


Connection Diagram



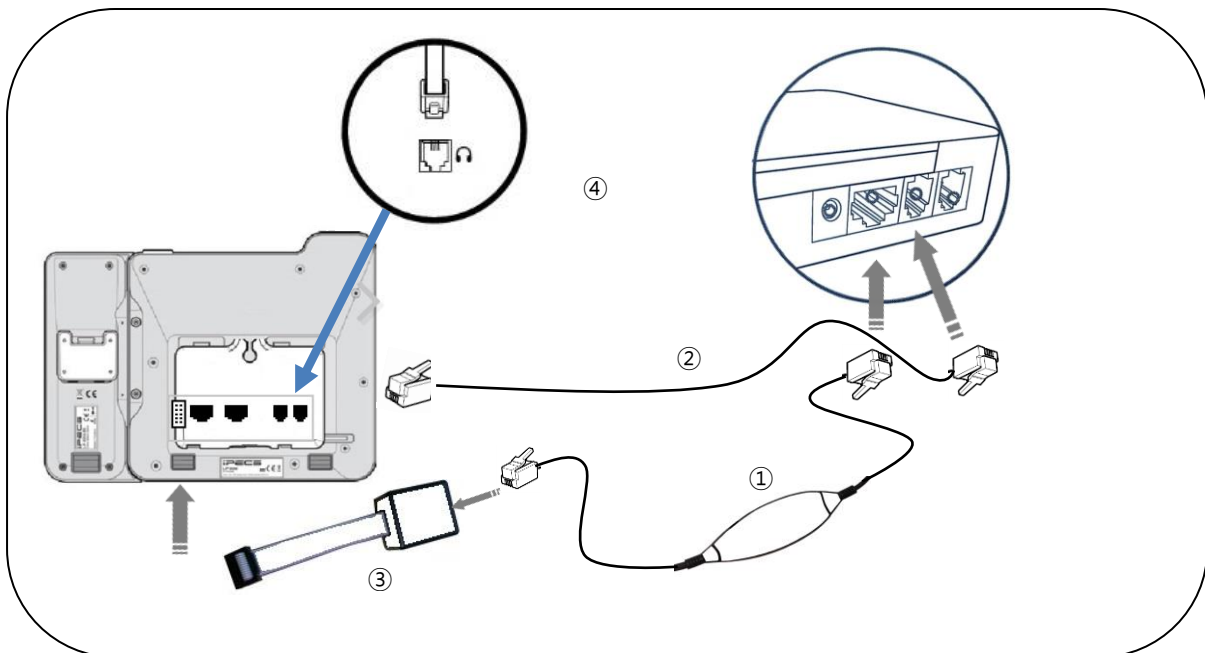
- ① : HHC EHS Adapter (EHS-12) : RJ-45(8P8c) and RJ-9(4P4C) to USB A-type Plug
- ② : USB Port(A-type Female)

Ericsson-LG EHS Setup guide



Need Ericsson-LG EHS Kit

Connection Diagram



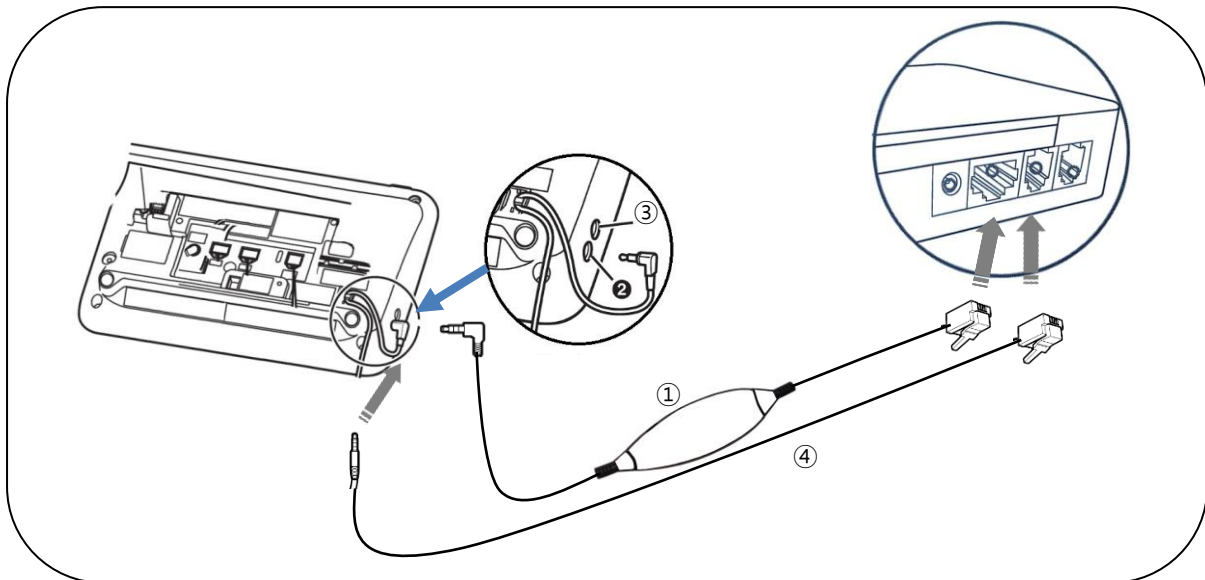
- ① LG EHS Adapter (EHS-11) : RJ-45(8P8C) to RJ-45(8P8C)
- ② Headset Port
- ③ EHS Adapter : supplied from Ericsson-LG reseller
- ④ Audio cables : RJ-9(4P4C) to RJ-9(4P4C)

Panasonic EHS setup guide

Panasonic	Phones
	NT553 NT556
	DT543 DT546
	NT543 HDV230
	HDV330 HDV430




Connection Diagram



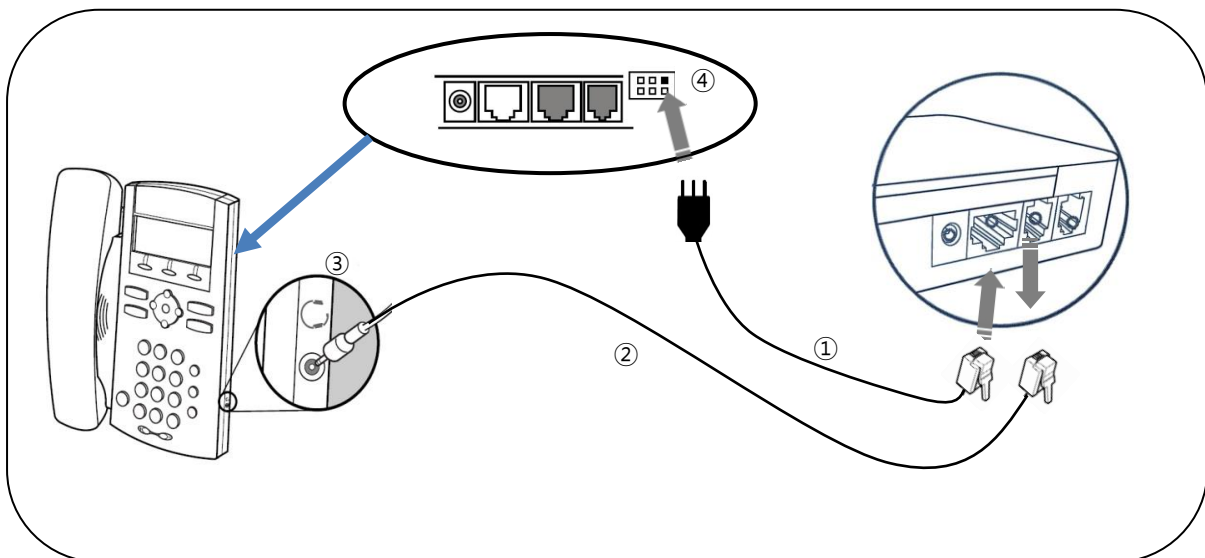
- ① Panasonic EHS Adapter (EHS-1) : RJ-45(8P8c) to 3.5ØPlug (3 poles)
- ② Headset Port
- ③ EHS Port
- ④ Audio cables : RJ-9(4P4C) to 3.5ØPlug (3 poles)

Polycom EHS Setup guide

Polycom	Phones	
	IP 320	IP 321
	IP 330	IP 331
	IP 335	IP 435
	IP 450	IP 550
	IP 560	IP 650
	IP 670	
	VVX 300	VVX 310
	VVX 400	VVX 410
	VVX 500	VVX 600
	VVX 1500	

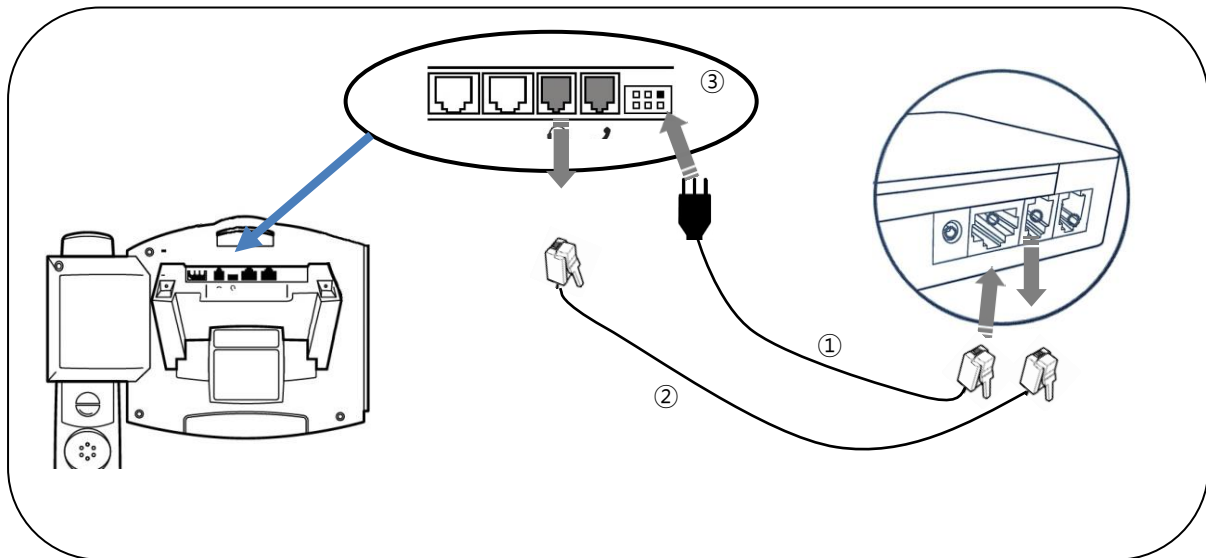


Connection Diagram



- ① Polycom EHS Adapter (EHS-5) : RJ-45(8P8c) to 5-Pin Plug
- ② Audio cables : RJ-9(4P4C) to 2.5ØPlug (3 poles)
- ③ Headset Port
- ④ EHS Port

Connection Diagram



- ① Polycom EHS Adapter (EHS-5) : RJ-45(8P8c) to 5-Pin Plug
- ② Audio cables : RJ-9(4P4C) to RJ-9(4P4C)
- ③ EHS Port

Note 1: Phone must be running SIP application 3.1 or higher and BootROM 4.1.0 or later.

Note 2: Phone must be running SIP application 3.0.2 or higher and BootROM 4.1.0 or later.

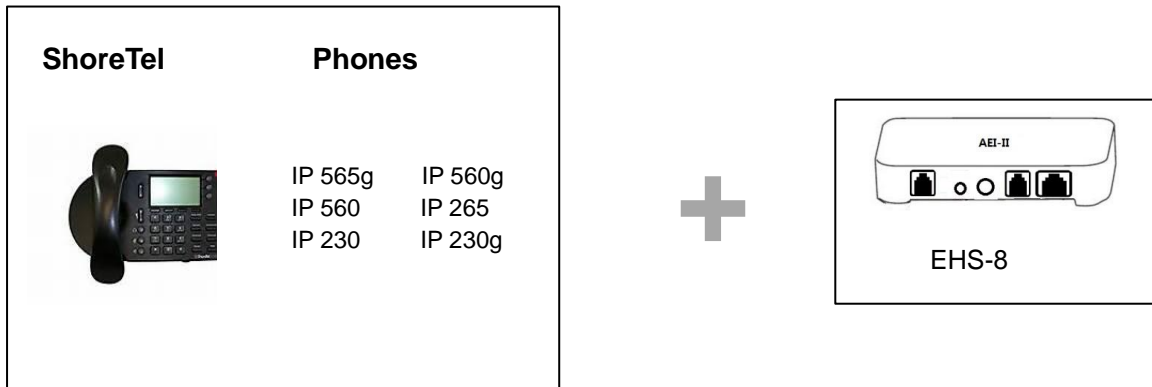
Note 3: Phone must be running SIP application 3.1.0 Rev C or higher and BootROM 4.1.0 or later.

Note 4: 2.5mm headset port connector requires Audio cable.

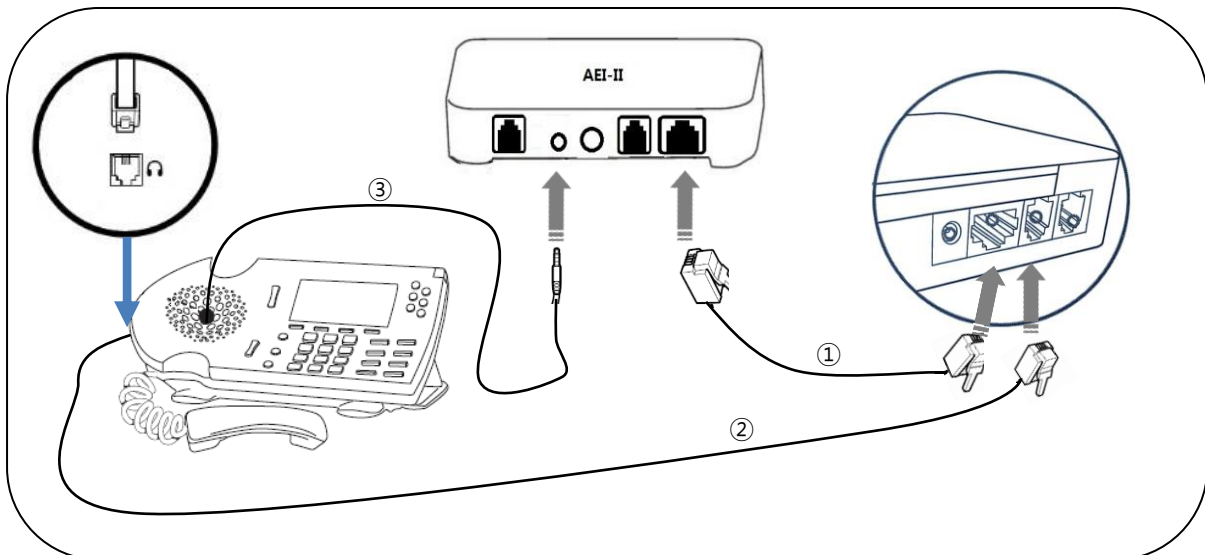
Instruction

Access your Polycom phone menu and change the headset settings to "Jabra Mode" or "Jabra DHSG" based on the manufacturer's instructions for your specific model. Depending on your phone model, you may need to complete this step after connecting the EHS adapter. Typically, changing the settings requires that you access the "Basic," "Preferences," and "Headset" sections in the menu on your phone. Once "Analog Headset Mode" appears on the screen, use the up and down arrows to select the Jabra Mode and then choose "Back," "Exit" or "Menu" to return to the main screen.

ShoreTel EHS Setup guide

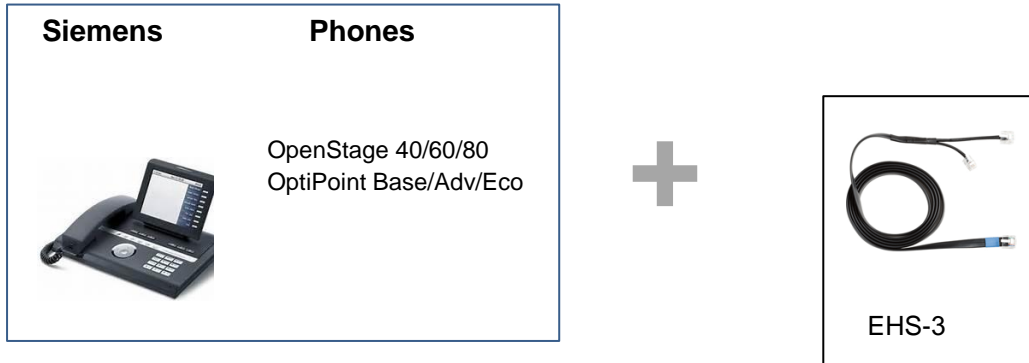


Connection Diagram

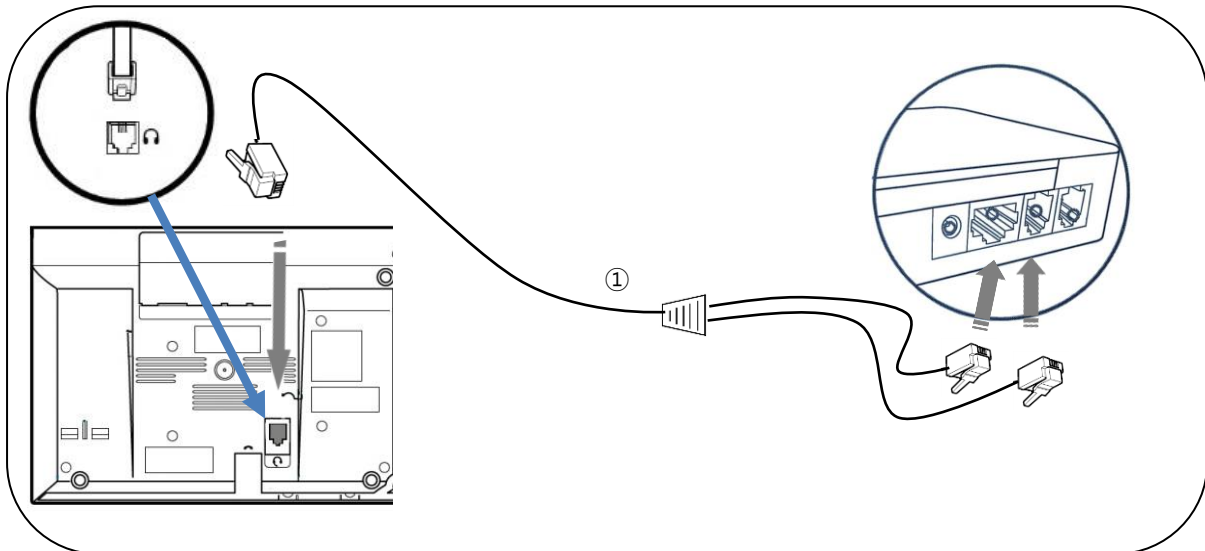


- ① Power cable (RJ-45 to RJ-12)
- ② Telephone cord (RJ-9 to RJ-9) : Cable length : 600mm
- ③ External Microphone : For ring detection

Siemens/Unify EHS Setup guide

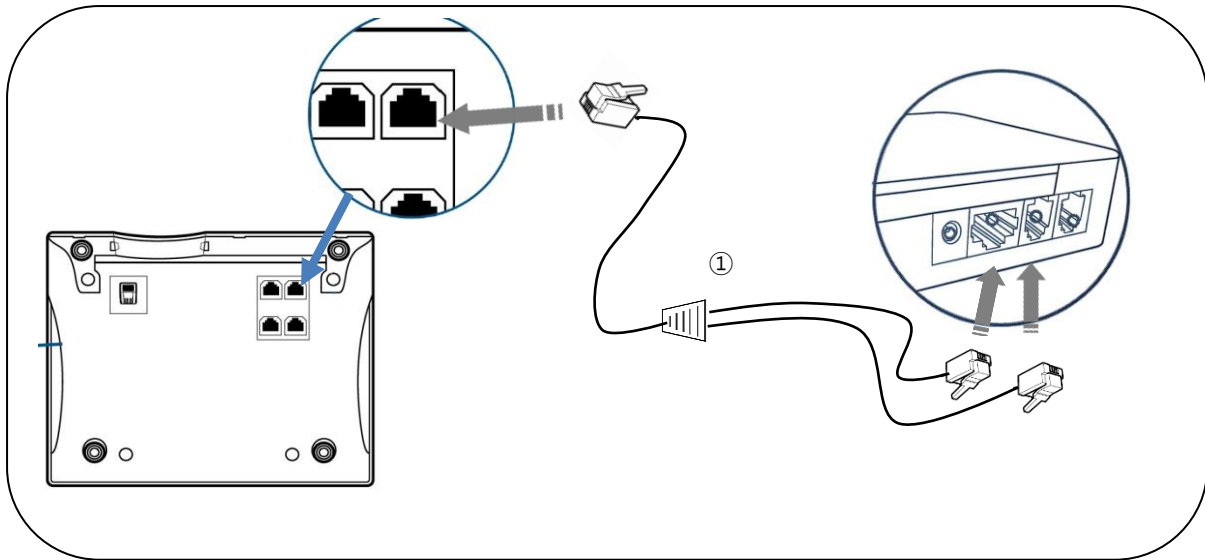


Connection Diagram (For OpenStage series)



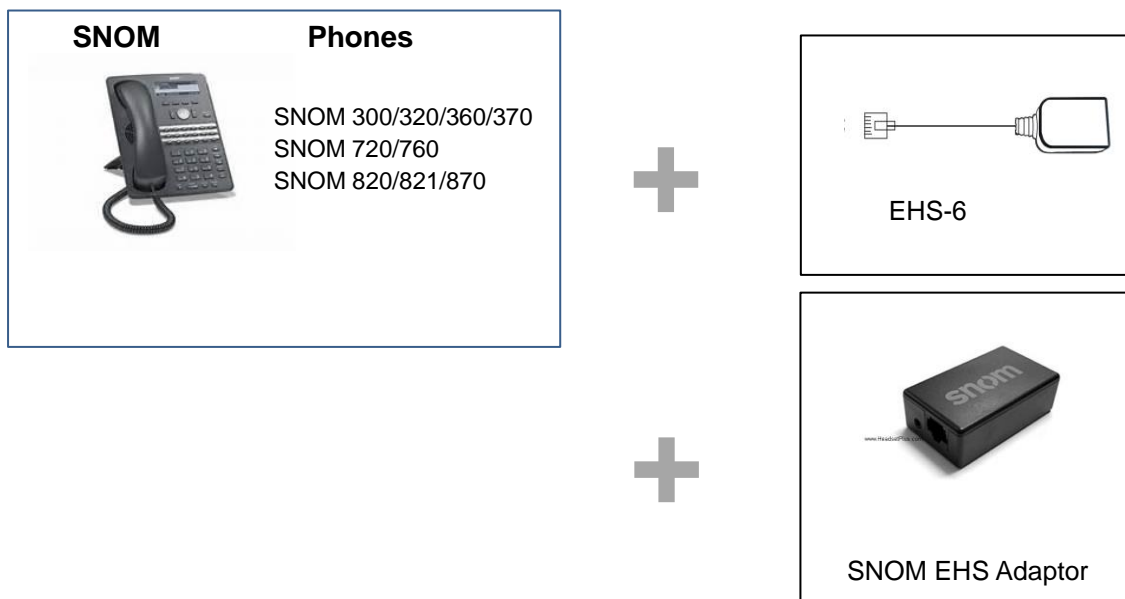
① DS-DHSG EHAS adapter (EHS-3) : RJ-45(8P8C) and RJ-9(4P4C) to RJ-45(8P8C)

Connection Diagram (For OpenScape and Optipoint series)

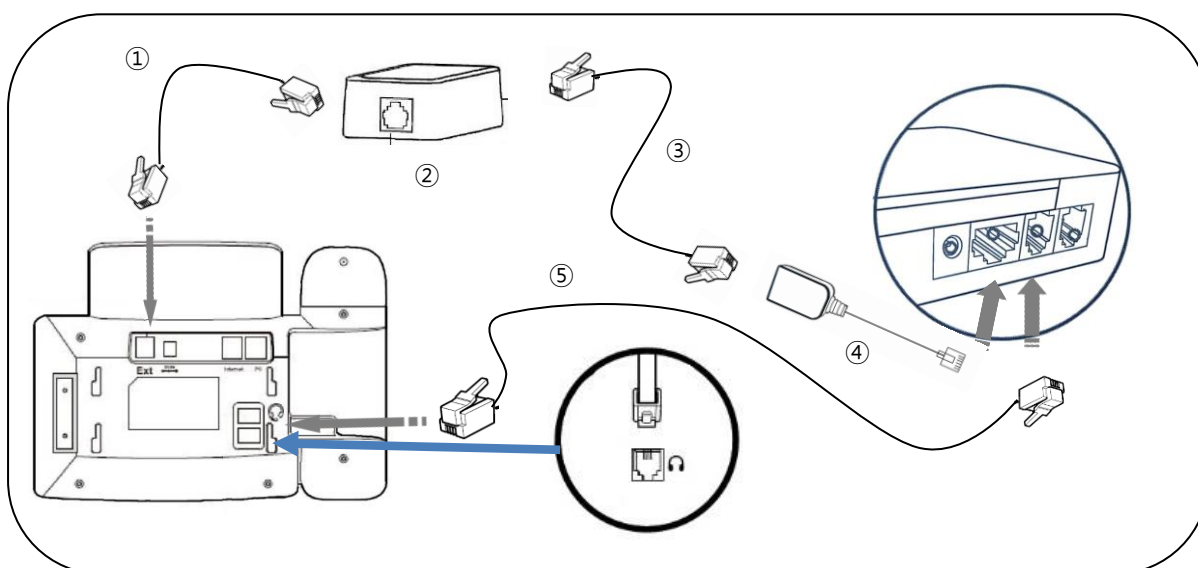


① DS-DHSG EHAS adapter (EHS-3) : RJ-45(8P8C) and RJ-9(4P4C) to RJ-45(8P8C)

SNOM EHS Setup guide



Connection Diagram




- ① Cord (RJ-12 to RJ-12) supplied by manufacturer of EHS Adapter – snom 3xx/snom 820
Cord (RJ-45 to RJ-12) supplied by manufacturer of EHS Adapter – snom 821/snom 870
- ② EHS Adapter supplied by Snom
- ③ Cord (RJ-45 to RJ-45) supplied by manufacturer of EHS Adapter
- ④ EHS Gender
- ⑤ Telephone cord (RJ-9 to RJ-9) : Cable length 600mm

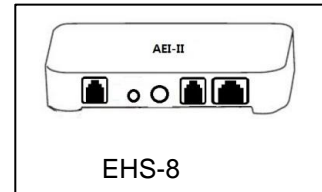
Snom 3xx: 7.3.30 + bootloader 1.1.3u and higher

Snom 7xx: 8.7.3.6 and higher

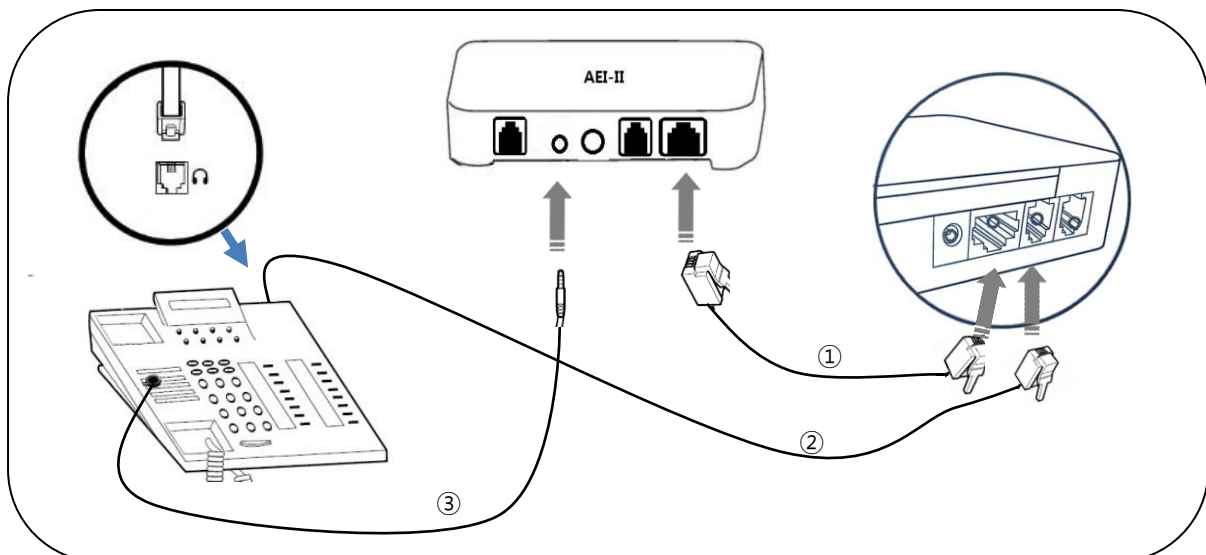
Snom 8xx: 8.4.32 and higher

Toshiba EHS Setup guide

Toshiba	Phones	
	IP5022-SD	IP5122-SD
	IP5122-SDC	IP5131-SDL
	IP5132-SD	
	DP5022-SD	DP5022-SDM
	DP5032-SD	DP5122-SD
	DP5130-FSDL	DP5130-SDL
	DP5132-SD	

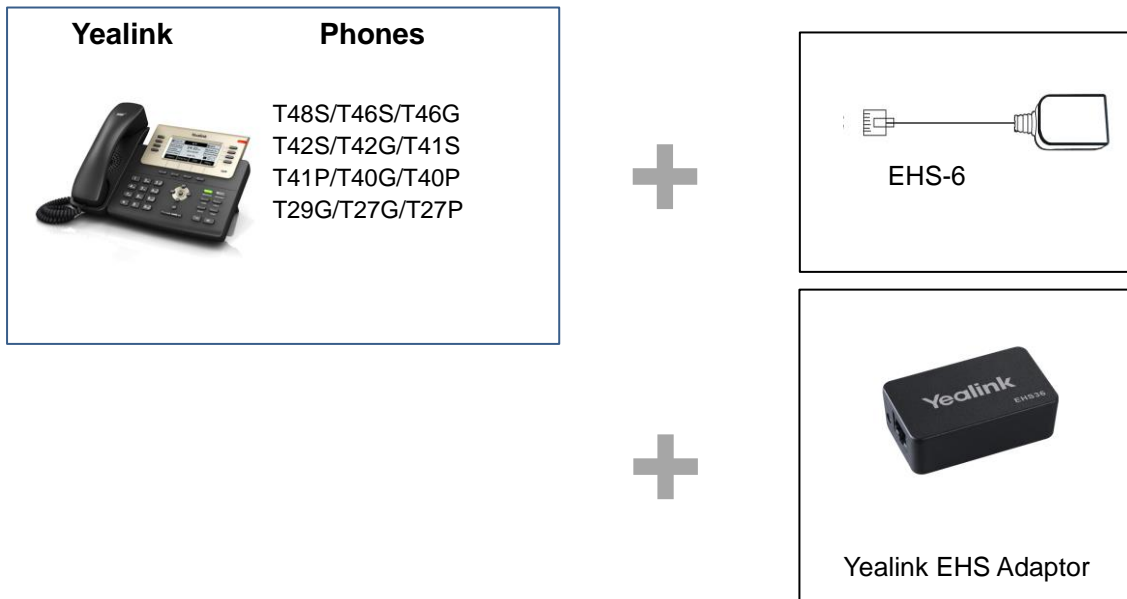


Connection Diagram

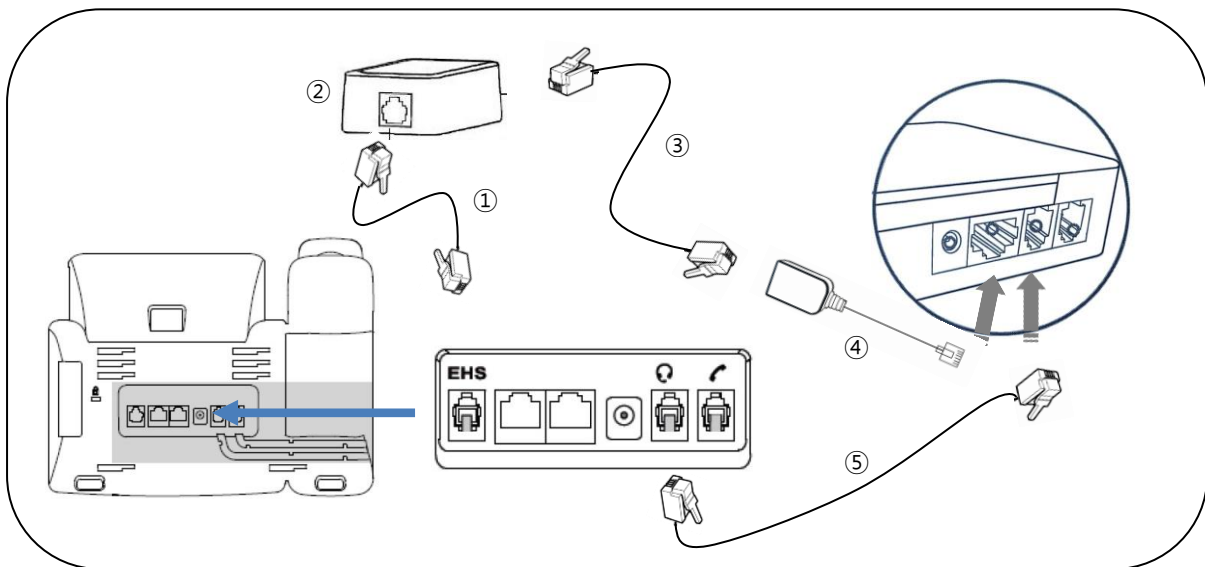


- ① Power cable (RJ-45 to RJ-12)
- ② Telephone cord (RJ-9 to RJ-9) : Cable length : 600mm
- ③ External Microphone : For ring detection

Yealink EHS Setup guide



Connection Diagram



- ① Cord (RJ-12 to RJ-12) supplied by manufacturer of EHS Adaptor
- ② EHS Adaptor supplied by Yealink
- ③ Cord (RJ-45 to RJ-45) supplied by manufacturer of EHS Adaptor
- ④ EHS Gender
- ⑤ Telephone cord (RJ-9 to RJ-9) : Cable length 600mm

