

Memory Module Specifications

KSM29RD4/64MER

64GB 2Rx4 8G x 72-Bit PC4-2933

CL21 Registered w/Parity 288-Pin DIMM

DESCRIPTION

Kingston's KSM29RD4/64MER is a 8G x 72-bit (64GB) DDR4-2933 CL21 SDRAM (Synchronous DRAM) registered w/ parity, 2Rx4, ECC, memory module, based on thirty-six 4G x 4-bit FBGA components. The SPD is programmed to JEDEC standard latency DDR4-2933 timing of 21-21-21 at 1.2V. Each 288-pin DIMM uses gold contact fingers. The electrical and mechanical specifications are as follows:

FEATURES

- Power Supply: VDD = 1.2V
- VDDQ = 1.2V
- VPP = 2.5V
- VDDSPD = 2.41V to 2.75V
- Functionality and operations comply with the DDR4 SDRAM datasheet
- 16 internal banks
- Bank Grouping is applied, and CAS to CAS latency (tCCD_L, tCCD_S) for the banks in the same or different bank group accesses are available
- Data transfer rates: PC4-2933, PC4-2666, PC4-2400, PC4-2133, PC4-1866, PC4-1600
- Bi-Directional Differential Data Strobe
- 8 bit pre-fetch
- Burst Length (BL) switch on-the-fly BL8 or BC4(Burst Chop)
- Supports ECC error correction and detection
- On-Die Termination (ODT)
- Temperature sensor with integrated SPD
- This product is in compliance with the RoHS directive.
- Per DRAM Addressability is supported
- Internal Vref DQ level generation is available
- Write CRC is supported at all speed grades
- CA parity (Command/Address Parity) mode is supported

SPECIFICATIONS

CL(IDD)	21 cycles
Row Cycle Time (tRCmin)	46.32ns(min.)
Refresh to Active/Refresh Command Time (tRFCmin)	350ns(min.)
Row Active Time (tRASmin)	32ns(min.)
Maximum Operating Power	*
UL Rating	94 V - 0
Operating Temperature	0° C to +85° C
Storage Temperature	-55° C to +100° C

*See IDD Specifications (page 2)

Module Assembly

DRAM: MICRON (E-DIE)

RCD: Rambus

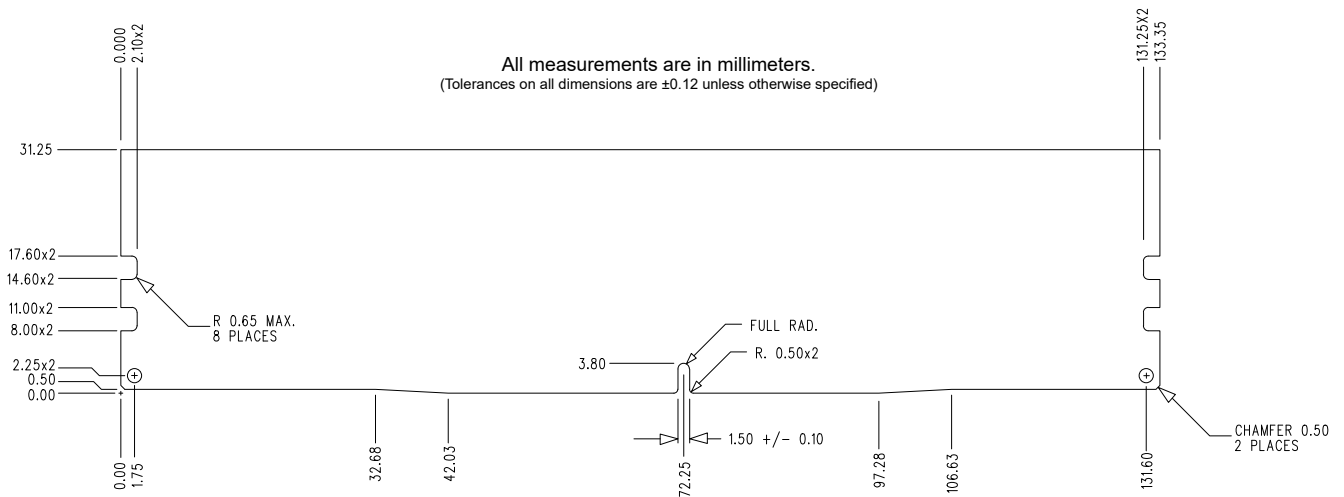
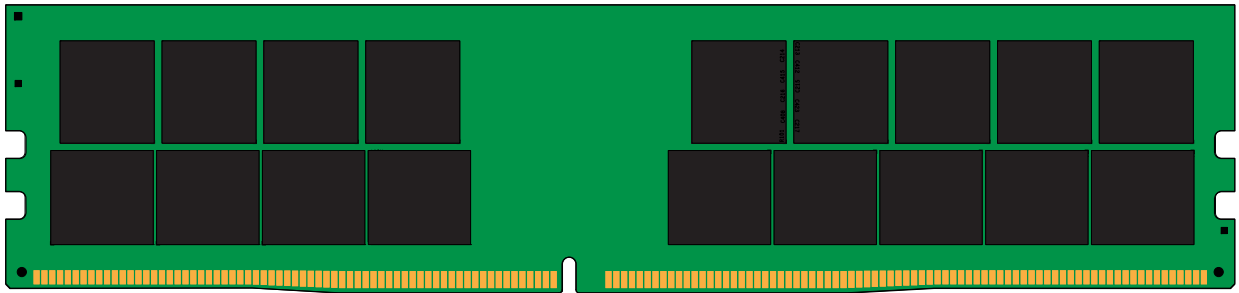
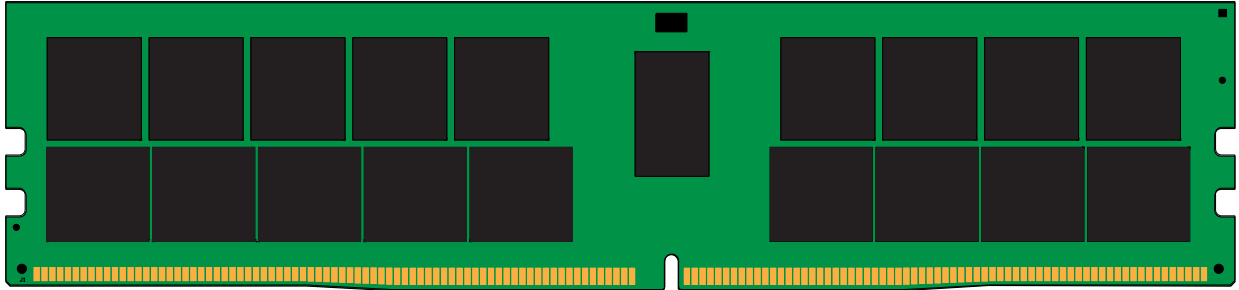
Continued >>

IDD Specifications

Symbol	2933	Units
I_{DD0}^1	1656	mA
I_{PP0}^1	90	mA
I_{DD1}^1	1854	mA
I_{DD2N}^2	1584	mA
I_{DD2NT}^1	1584	mA
I_{DD2P}^2	1368	mA
I_{DD2Q}^2	1512	mA
I_{DD3N}^2	2124	mA
I_{PP3N}^2	72	mA
I_{DD3P}^2	1692	mA
I_{DD4R}^1	2826	mA
I_{DD4W}^1	2502	mA
I_{DD5R}^1	1908	mA
I_{PP5R}^1	108	mA
I_{DD6N}^2	1908	mA
I_{DD6E}^2	4068	mA
I_{DD6R}^2	720	mA
I_{DD6A}^2	396	mA
I_{DD6A}^2	720	mA
I_{DD6A}^2	1836	mA
I_{DD6A}^2	4068	mA
I_{PP6X}^2	216	mA
I_{DD7}^1	4194	mA
I_{PP7}^1	198	mA
I_{DD8}^2	1296	mA

continued

MODULE DIMENSIONS



The product images shown are for illustration purposes only and may not be an exact representation of the product.
Kingston reserves the right to change any information at anytime without notice.