

PERFORMANCE

Processor

Intel® Core™ i7-1260P, 12C (4P + 8E) / 16T, P-core 2.1 / 4.7GHz, E-core 1.5 / 3.4GHz, 18MB

Graphics

Integrated Intel Iris® Xe Graphics

Chipset

Intel SoC Platform

Memory

16GB Soldered LPDDR5-5200

Memory Slots

Memory soldered to systemboard, no slots, dual-channel

Max Memory

16GB soldered memory, not upgradable

Storage

1TB SSD M.2 2280 PCIe® 4.0x4 NVMe®

Storage Support

One drive, up to 256GB M.2 2242 SSD or 1TB M.2 2280 SSD

Card Reader

None

Optical

None

Audio Chip

High Definition (HD) Audio, Realtek® ALC3306 codec

Speakers

Stereo speakers, 3W x2 (woofers on the side), 2W x2 (front-facing tweeters on hinge bar), optimized with Dolby® Atmos®, audio by Bowers & Wilkins

Camera

ToF, FHD 1080p & IR with Privacy Shutter

Microphone

2x, Array

Battery

Integrated 75Wh

Max Battery Life

4K OLED model:
MobileMark® 2018@200nits: 10.5 hr
Local video (1080p) playback@150nits: 14 hr

Power Adapter

100W USB-C® Slim (3-pin)

DESIGN

Display

14" 4K WQUXGA (3840x2400) OLED 400nits Glossy, 100% DCI-P3, DisplayHDR™ HDR 500, Dolby Vision™, Glass, Touch

Touchscreen

10-point Multi-touch

Keyboard

Backlit, Czech / Slovak

Case Color

Storm Grey

Surface Treatment

Aluminium CNC

Case Material

Aluminium

Pen

Lenovo® Precision Pen 2

Dimensions (WxDxH)

318 x 230 x 15.25 mm (12.52 x 9.06 x 0.6 inches)

Weight

Starting at 1.4 kg (3.09 lbs)

SOFTWARE

Operating System

Windows® 11 Pro 64, Czech / Slovak / English

Bundled Software

Office Trial

CONNECTIVITY

Ethernet

None

WLAN + Bluetooth®

Wi-Fi® 6E 11ax, 2x2 + BT5.2

WWAN

None

NFC

None

Standard Ports

- 1x USB 3.2 Gen 2
- 1x USB-C 3.2 Gen 2 (support data transfer, Power Delivery 3.0, and DisplayPort™ 1.4)
- 1x Headphone / microphone combo jack (3.5mm)
- 2x Thunderbolt™ 4 (support data transfer, Power Delivery 3.0, and DisplayPort 1.4)

Monitor Cable

None

SECURITY & PRIVACY

Security Chip

Firmware TPM 2.0

Fingerprint Reader

Touch Style

Other Security

- Camera privacy shutter
- IR camera for Windows® Hello

SERVICE

Base Warranty

2-year, Depot

Included Upgrade

2Y Premium Care with Onsite upgrade from 2Y Courier/Carry-in (5WSOT73704), CO2 Offset 1 ton (5WS1H38504)

ACCESSORIES

Bundled Accessories

Lenovo® Yoga® 14-inch Sleeve

CERTIFICATIONS

Green Certifications

- EPEAT™ Silver
- ENERGY STAR® 8.0
- ErP Lot 3
- RoHS compliant

Other Certifications

- Intel® Evo™ Platform
- TÜV Rheinland® Low Blue Light (Hardware Solution)

MODEL

TopSeller : Yes **Announce Date** : 2022-07-01

EAN / UPC / JAN : 196802354486 **End of Support** : N/A



intel

- Lenovo reserves the right to change specifications or other product information without notice.
- Product image on this page is a sample, it may not match the real color of this model
- Battery life is an estimated maximum. Actual battery life may vary based on many factors, including screen brightness, active applications, features, power management settings, battery age and conditioning, and other customer preferences

Premium Care - Advanced Support from Real People. Real Fast.



REAL PERSON

Choose how you want to reach us - through the phone, chat or email - our expert technicians will take care of you.



REAL FAST

Highly trained technicians will provide you real-time solutions, whatever the issue, on your first contact. If needed, our team will schedule an onsite visit for the next business day.



HASSLE FREE

'Getting started' and 'how-to' assistance for hardware and software. Easy solutions that are simple to reach - that's how Premium Care delivers you the ideal support experience.



PC HEALTH CHECK

Free annual PC Health Check that allows our experts to spot issues before you do so they can resolve them quickly and help you avoid PC problems.

Accidental Damage Protection - Protection of your PC from the unexpected.

Experience shows that a significant portion of devices may be damaged (and not covered under warranty) in the first three years. Lenovo's Accidental Damage Protection service covers accidents beyond the system warranty such as drops, spills, bumps and even electrical surges. Make sure your new device has maximum protection, avoid unplanned costs and get peace of mind.

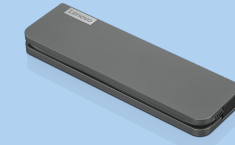
Base Warranty – Included with the systems you purchase, default 1- or 3-year coverage window.

Warranty Extensions & Upgrades – Service and protection that's right for your circumstances.

- Pick Up & Return Courier
- Onsite Support
- Technician Installed Customer
- Replaceable Unit Service
- International Warranty Upgrade

Lenovo may not offer the products, services or features discussed in this document in all regions. Lenovo may withdraw an offering at any time. Consult your local representative for information on offerings available in your area. Lenovo reserves the right to change specifications or other product information without notice. Lenovo is not responsible for photographic or typographical errors. Lenovo provides this publication "as is" without warranty of any kind, either express or implied, including the implied warranties of merchantability or fitness for a particular purpose.

Recommended Accessories



Lenovo USB-C Mini Dock_US

40AU0065US

Expand Your Potential with An Universal Mini Dock; Lenovo understands that modern business depends on a wide variety of PC's and even brands to meet their business needs. To make this easier Lenovo USB-C Mini dock is ...



Lenovo 65W USB-C DC Travel Adapter

40AK0065WW

Power up and stay productive on the road with this DC Travel adapter. Lenovo 65W USB-C DC Travel Adapter is the universal DC adapter, providing 65W power via USB-C for outdoor use.

For a full list of accessories and services, please visit:
<https://smartfind.Lenovo.com>

Lenovo

PSREF
Product Specifications
Reference