

## PERFORMANCE

### Processor

Qualcomm® Snapdragon™ 7c Gen 2 (8C, 8x Kryo 468 @2.55GHz)

### Graphics

Integrated Qualcomm Adreno™ GPU

### Chipset

Qualcomm SoC Platform

### Memory

8GB Soldered LPDDR4x-2133

### Memory Slots

Memory soldered to systemboard, no slots, dual-channel

### Max Memory

8GB soldered memory, not upgradable

### Storage

128GB eMMC 5.1

### Storage Support<sup>[1]</sup>

128GB eMMC 5.1 on systemboard

### Storage Slot

eMMC on systemboard, no slots

### Card Reader

No card reader

### Optical

None

### Audio Chip

High Definition (HD) Audio, Realtek® ALC5682I codec

### Speakers

Stereo speakers, 1W x2

### Camera

Front 5.0MP / Rear 8.0MP

### Microphone

2x, Array

### Battery

Integrated 29Wh

### Power Adapter

30W USB-C® (2-pin, Wall-mount)

## DESIGN

### Display<sup>[2]</sup>

10.95" 2K (2000x1200) IPS 400nits Glossy / Anti-fingerprint, 70.8% NTSC, TÜV Low Blue Light, Touch

### Touchscreen

In-cell, 10-point Multi-touch

### Keyboard

Non-backlit, Czech

### Case Color

Misty Blue

### Surface Treatment

Aluminium Stamping (Anodized with Sandblasting)

### Case Material

Aluminium, PC-ABS

### Pen<sup>[3]</sup>

Lenovo® USI Pen 2

### Dimensions (WxDxH)<sup>[4]</sup>

258.04 x 164.55 x 7.90 mm (10.15 x 6.47 x 0.31 inches)

### Weight<sup>[5]</sup>

Pad: starting at 516.5 g (1.14 lbs)  
Folio keyboard: starting at 429.3 g (0.95 lbs)  
Total: starting at 945.8 g (2.09 lbs)

## SOFTWARE

### Operating System

ChromeOS

### Bundled Software

None

## CONNECTIVITY

### Ethernet

No Onboard Ethernet

### WLAN + Bluetooth<sup>[6]</sup>

11ac 2x2 + BT5.1

### WWAN

None

### NFC

None

### Standard Ports

- 1x Pogo pin connector (5-point)
- 2x USB-C 3.1 Gen 1 (support data transfer, Power Delivery 3.0 and DisplayPort™ 1.4)

### Docking

IdeaPad® Duet Folio Keyboard

## SECURITY & PRIVACY

### Security Chip

Google Security Chip H1

### Fingerprint Reader

None

## SERVICE

### Base Warranty

2-year, Courier or Carry-in

### Included Upgrade

None

## ACCESSORIES

### Bundled Accessories

None

## CERTIFICATIONS

### Green Certifications

- ENERGY STAR® 8.0
- ErP Lot 6
- ErP Lot 26
- RoHS compliant

### Other Certifications

TÜV Rheinland® Low Blue Light (Software Solution)

## MODEL

**TopSeller** : Yes **Announce Date** : 2023-07-03

**EAN / UPC / JAN** : 197532262454 **End of Support** : 2028-04-11



Product image is a sample, it may not match the real color of this model  
Note:

<sup>[1]</sup> The storage capacity supported is based on the test results with current Lenovo storage offerings.

<sup>[2]</sup> IPS (in-plane switching) technology may refer to IPS, PLS, ADS, AHVA, AAS.

<sup>[3]</sup> IP Duet 3 Chrome 11Q727 is only compatible with USI 2.0 stylus pens and not USI 1.0.

<sup>[4]</sup> The system dimensions may vary depending on configurations.

<sup>[5]</sup> The system weight is approximate and based on results in Lenovo lab, which varies depending on the source of component, variance of the distribution of each component, and manufacturing process. It may not be the exact weight for each specific model.

<sup>[6]</sup> Bluetooth 5.2 is hardware ready but may run at a lower version due to OS limitations.

· Lenovo reserves the right to change specifications without notice.

To see more note information, please link to  
<https://psref.lenovo.com/Detail/1890?M=82T60034MC>

## Premium Care - Advanced Support from Real People. Real Fast.



### REAL PERSON

Choose how you want to reach us - through the phone, chat or email - our expert technicians will take care of you.



### REAL FAST

Highly trained technicians will provide you real-time solutions, whatever the issue, on your first contact. If needed, our team will schedule an onsite visit for the next business day.



### HASSLE FREE

'Getting started' and 'how-to' assistance for hardware and software. Easy solutions that are simple to reach - that's how Premium Care delivers you the ideal support experience.



### PC HEALTH CHECK

Free annual PC Health Check that allows our experts to spot issues before you do so they can resolve them quickly and help you avoid PC problems.

## Accidental Damage Protection - Protection of your PC from the unexpected.

Experience shows that a significant portion of devices may be damaged (and not covered under warranty) in the first three years. Lenovo's Accidental Damage Protection service covers accidents beyond the system warranty such as drops, spills, bumps and even electrical surges. Make sure your new device has maximum protection, avoid unplanned costs and get peace of mind.

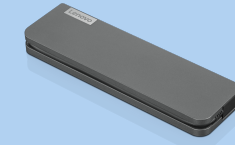
## Base Warranty – Included with the systems you purchase, default 1- or 3-year coverage window.

## Warranty Extensions & Upgrades – Service and protection that's right for your circumstances.

- Pick Up & Return Courier
- Onsite Support
- Technician Installed Customer
- Replaceable Unit Service
- International Warranty Upgrade

Lenovo may not offer the products, services or features discussed in this document in all regions. Lenovo may withdraw an offering at any time. Consult your local representative for information on offerings available in your area. Lenovo reserves the right to change specifications or other product information without notice. Lenovo is not responsible for photographic or typographical errors. Lenovo provides this publication "as is" without warranty of any kind, either express or implied, including the implied warranties of merchantability or fitness for a particular purpose.

## Recommended Accessories



### Lenovo USB-C Mini Dock\_US

40AU0065US

Expand Your Potential with An Universal Mini Dock; Lenovo understands that modern business depends on a wide variety of PC's and even brands to meet their business needs. To make this easier Lenovo USB-C Mini dock is ...



### Lenovo 65W USB-C DC Travel Adapter

40AK0065WW

Power up and stay productive on the road with this DC Travel adapter. Lenovo 65W USB-C DC Travel Adapter is the universal DC adapter, providing 65W power via USB-C for outdoor use.

For a full list of accessories and services, please visit:  
<https://smartfind.Lenovo.com>

Lenovo

PSREF  
Product Specifications  
Reference