

PERFORMANCE

Processor

AMD Ryzen™ 5 PRO 4650GE (6C / 12T, 3.3 / 4.2GHz, 3MB L2 / 8MB L3)

Graphics

Integrated AMD Radeon™ Graphics

Chipset

AMD PRO 500 chipset

Memory

1x 8GB SO-DIMM DDR4-3200

Memory Slots

Two DDR4 SO-DIMM slots, dual-channel capable

Max Memory

Up to 64GB

Storage

256GB SSD M.2 2280 PCIe NVMe Opal

Storage Support

Up to 2 drives, 1x 2.5" HDD + 1x M.2 PCIe NVMe SSD

- 2.5" HDD up to 1TB

- M.2 SSD up to 1TB

Optical

None

Audio Chip

High Definition (HD) Audio, Realtek® ALC222 codec

Speakers

1.5Wx1

Power Supply

65W 89% Adapter

DESIGN

Keyboard

USB Traditional Keyboard, Black, Czech / Slovak

Mouse

USB Calliope Mouse, Black

Expansion Slots

- One M.2 slot (for SSD)

- One M.2 slot (for WLAN)

Case Color

Black

Stand

None

Adapter Cage

Adapter Cage

Toolless Chassis Screw

Toolless Chassis Screw

Dust Filter

None

VESA Mount

VESA Mount

Form Factor

Tiny (1L)

Dimensions (WxDxH)

179 x 183 x 34.5 / 37 mm with rubber feet (7.05 x 7.2 x 1.36 / 1.5 inches with rubber feet)

Weight

1.25 kg (2.76 lbs)

CONNECTIVITY

Ethernet

Integrated 100/1000M, Realtek RTL8111HN

WLAN + Bluetooth®

RTL8822CE 11ac, 2x2 + BT5.0

Front Ports

- 1x headphone / microphone combo jack (3.5mm)

- 1x USB-C 3.2 Gen 1

- 1x USB 3.2 Gen 2 (Always On and fast charge)

Rear Ports

- 2x USB 2.0

- 2x USB 3.2 Gen 1

- 1x Ethernet (RJ-45)

- 1x HDMI®

- 1x DisplayPort™

Optional Rear Ports

1x DP

Monitor Cable

None

SECURITY & PRIVACY

Security Chip

Discrete TPM 2.0, TCG certified

Physical Locks

Kensington® Security Slot

Kensington Cable Lock

None

Chassis Intrusion Switch

Chassis Intrusion Switch

MANAGEABILITY

System Management

None

SERVICE

Base Warranty

3-year, Onsite

Included Upgrade

None

CERTIFICATIONS

Green Certifications

- ErP Lot 3

- ENERGY STAR® 8.0

- EPEAT™ Silver (on some models)

- TCO

- RoHS compliant

- EPEAT Gold (on some models)

- TUV Rheinland Low Noise / Ultra Low Noise (on some models)

Mil-Spec Test

MIL-STD-810H military test passed

SOFTWARE

Operating System

Windows® 10 Pro 64, Czech / Slovak / English

Bundled Software

None

MODEL

TopSeller : Yes

Announce Date : 2021-05-31

EAN / UPC / JAN : 0195891806616

End of Support : 2027-05-29



AMD

Premier Support - A direct 24x7x365 line to our most elite technicians.

Advanced technical support, 24x7x365, in more than 100 markets

Technical Account Managers for proactive relationship and escalation management

Comprehensive hardware & OEM software support

Priority on service delivery and repair parts

Single point of contact for simplified end-to-end case management

Lenovo Service Connect Portal for customized reporting and product support

Accidental Damage Protection - Protection of your PC from the unexpected.

Experience shows that a significant portion of devices may be damaged (and not covered under warranty) in the first three years. Lenovo's Accidental Damage Protection service covers accidents beyond the system warranty such as drops, spills, bumps and even electrical surges. Make sure your new device has maximum protection, avoid unplanned costs and get peace of mind.

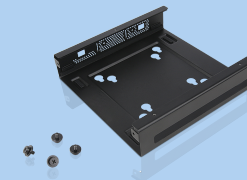
Base Warranty - Included with the systems you purchase, default 1- or 3-year coverage window.

Warranty Extensions & Upgrades - Service and protection that's right for your circumstances.

- Pick Up & Return Courier
- Onsite Support
- Technician Installed Customer
- Replaceable Unit Service
- International Warranty Upgrade

Lenovo may not offer the products, services or features discussed in this document in all regions. Lenovo may withdraw an offering at any time. Information is subject to change without notice. Consult your local representative for information on offerings available in your area. Lenovo reserves the right to change specifications or other product information without notice. Lenovo is not responsible for photographic or typographical errors. Lenovo provides this publication "as is" without warranty of any kind, either express or implied, including the implied warranties of merchantability or fitness for a particular purpose.

Recommended Accessories



ThinkCentre Tiny VESA Mount II

4XFON03161

The ThinkCentre Tiny VESA Mount II is a unique design specific to house the Tiny PC while featuring the universal VESA mount configuration. The VESA standard enables this mount to attach to anything that is VESA comp...



Kensington MicroSaver 2.0 Cable Lock from Lenovo

4XEON80914

Protect your device. Lenovo offers the latest standard in device security - the MicroSaver 2.0 Cable Lock From Lenovo. Engineered to be the smallest, strongest lock for laptops and other devices, the MicroSaver 2.0 re...

For a full list of accessories and services, please visit:
<https://smartfind.Lenovo.com>

PSREF

Product Specifications
Reference