

Tab P11 + Smart Charging Station 2 ZA7Y0017CZ

PSREF

Product Specifications
Reference

PERFORMANCE

Processor

Qualcomm® Snapdragon™ 662 (8C, 8x Kryo 260 @2.0GHz)

Graphics

Integrated Qualcomm Adreno™ 610 GPU

Chipset

Qualcomm SoC Platform

Memory

4GB LPDDR4x

Storage

128GB UFS 2.1

Expandable Memory

MicroSD card (Up to 1TB, exFAT)

Card Reader

Single Nano-SIM & MicroSD Card Slot

Storage Support

- 128GB UFS 2.1, on systemboard
- MicroSD card, supports FAT32 up to 512GB, exFAT up to 1TB

Camera

Front 8.0MP / Rear 13.0MP

Microphone

2x, Array

Speakers

4 side stereo speakers, optimized with Dolby® Atmos®

Sensors

- Accelerometer (G) sensor
- Hall sensor
- Gyroscope sensor
- Ambient light sensor (ALS)
- ToF sensor

Vibrator

Vibrator

Battery

Integrated 7500mAh

Max Battery Life

Standby Time: Over 4 wks

Online Video Playback Time: 12 hr

Talk Time: 15 hr

Browsing Time: 12 hr

Music playtime: 15 hr

Charging Time

Over 3 hr to fully charged

Power Adapter

10V / 2.0A

DESIGN

Display

11" 2K (2000x1200) IPS TDDI 400nits

Touchscreen

10-point Multi-touch

Case Material

Metal + PC + GF

Keyboard

None

Pen

None

Water Proofing

IP52

Dimensions (WxDxH)

Tablet: 258.4 x 7.5 x 163 mm (10.17 x 0.29 x 6.41 inches)

Smart Charging Station 2: 125.3 x 11.53 x 92.61 mm (4.93 x 0.45 x 3.64 inches)

Weight

Pad: Around 490 g (1.08 lbs)

Smart Charging Station 2: 260 g (0.57 lbs)

Case Color

Slate Grey

SOFTWARE

Operating System

Android™ 10 (Q)

Preinstalled Software

- Google Play
- Google Photos
- Dolby Atmos
- Amazon Music
- Office
- Tips
- Google Chrome
- Google
- Netflix
- Gmail
- Kids Space
- Squid

CONNECTIVITY

WLAN + Bluetooth™

11a/b/g/n/ac, 1x1 + BT5.1

WWAN

4G LTE

SIM Card

No SIM card

VoiceCall

No

Standard Ports

- 1x Pogo pin connector (4-point)
- 1x USB-C 2.0 (support data transfer, OTG, Power Delivery, T-Hub, and USB-C audio devices)

Optional Ports (configured)

1x Nano-SIM + microSD card slot (WWAN model)

SERVICE

Base Warranty

2-year, Mail-in with 1-year Battery

ACCESSORIES

Bundled Accessories

Smart Charging Station (Cradle)

CERTIFICATIONS

Green Certifications

- ENERGY STAR® 8.0
- RoHS compliant

Other Certifications

TUV Low Blue Light certified

MODEL

TopSeller : No

Announce Date : 2020-12-22

EAN / UPC / JAN : 195348565516



· Product image on this page is a sample, it may not match the real color of this model

· Battery life is an estimated maximum. Actual battery life may vary based on many factors, including screen brightness, active applications, features, power management settings, battery age and conditioning, and other customer preferences

Premium Care - Advanced Support from Real People. Real Fast.

REAL PERSON

Choose how you want to reach us – through phone, chat, or email – our expert technicians will take care of your device issues.

HASSLE FREE

‘Getting started’ and ‘how-to’ assistance for hardware and software. Easy solutions that are simple to reach – that’s how Premium Care delivers you the ideal support experience.

REAL FAST

Highly trained technicians will provide you real-time solutions, whatever the issue, on your first contact. If the issue can’t be solved remotely, our team will schedule a repair via depot / carry-in support to resolve your issue.

Accidental Damage Protection One - Protection for your Tablet from the unexpected.

Avoid the hassles of unexpected damage & repair costs. With coverage for drops, spills, electric surges, and broken LCD screens, accidental damage protection makes it easy to repair to your Tablets, permitting a single repair during the coverage period.

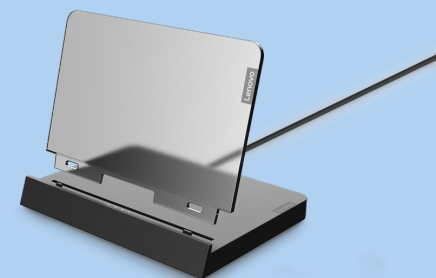
Base Warranty - Included with the system you purchase with default 1-year coverage window.

Lenovo Warranty Extensions & Upgrades (up to 3 years duration) - Gain complete peace of mind by extending your base warranty to up to 3 years and minimize unexpected repair costs.

- Pick up & return courier / Depot support
- Replaceable unit service*

*Applicable in some regions only. Please check with your local services team for more details.

Lenovo may not offer the products, services or features discussed in this document in all regions. Lenovo may withdraw an offering at any time. Consult your local representative for information on offerings available in your area. Lenovo reserves the right to change specifications or other product information without notice. Lenovo is not responsible for photographic or typographical errors. Lenovo provides this publication “as is” without warranty of any kind, either express or implied, including the implied warranties of merchantability or fitness for a particular purpose.



For a full list of accessories and services, please visit:
<https://smartfind.Lenovo.com>

PSREF
Product Specifications
Reference